

Datasheet for ABIN1531448  
**anti-MYL12B antibody (pSer18)**

## 3 Images

[Go to Product page](#)

## Overview

Quantity:	100 µg
Target:	MYL12B
Binding Specificity:	AA 3-52, pSer18
Reactivity:	Human, Mouse, Rat
Host:	Rabbit
Clonality:	Polyclonal
Conjugate:	This MYL12B antibody is un-conjugated
Application:	Western Blotting (WB), ELISA, Immunohistochemistry (IHC), Immunofluorescence (IF)

## Product Details

Immunogen:	The antiserum was produced against synthesized peptide derived from human Myosin regulatory light chain 2 around the phosphorylation site of Ser18.
Isotype:	IgG
Specificity:	Myosin regulatory light chain 2 (Phospho-Ser18) Antibody detects endogenous levels of Myosin regulatory light chain 2 only when phosphorylated at Ser18. PhosphorylationH:S18 M:S20 R:S19
Purification:	The antibody was purified from rabbit antiserum by affinity-chromatography using phospho peptide. The antibody against non-phospho peptide was removed by chromatography using corresponding non-phospho peptide.
Purity:	> 95 %

## Target Details

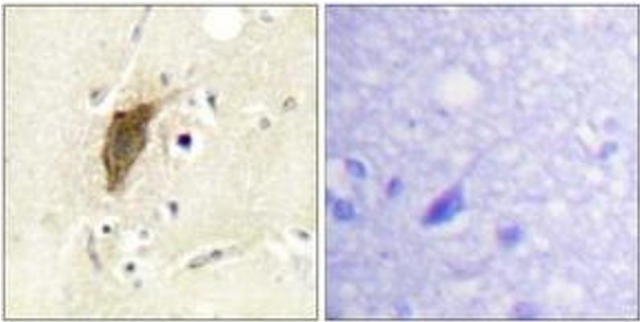
Target:	MYL12B
Alternative Name:	Myosin Regulatory Light Chain 2 ( <a href="#">MYL12B Products</a> )
Background:	Synonyms: Myosin regulatory light polypeptide 9, 20 kDa myosin light chain, LC20, MLC-2C, Myosin RLC, Myosin regulatory light chain 2 smooth muscle isoform, Myosin regulatory light chain 9, Myosin regulatory light chain MRLC1 , MYL9 , MLC2, MRLC1, MYRL2 NCBI Gene Symbol: MLRN
Molecular Weight:	19 kDa
Gene ID:	3566
OMIM:	147781
UniProt:	<a href="#">P24844</a>
Pathways:	<a href="#">Feeding Behaviour</a>

## Application Details

Application Notes:	WB: 1:500~1:1000 IHC: 1:50~1:100 IF: 1:100~1:500 ELISA: 1:20000
Comment:	Unigene-Number: Hs.513457 (NCBI Gene Symbol: MLRN)
Restrictions:	For Research Use only

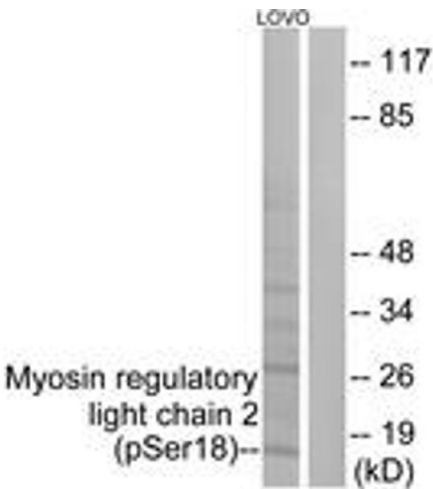
## Handling

Format:	Liquid
Concentration:	1 mg/mL
Buffer:	phosphate buffered saline (without Mg2+ and Ca2+), pH 7.4, 150 mM NaCl, 0.02 % sodium azide and 50 % glycerol.
Preservative:	Sodium azide
Precaution of Use:	This product contains sodium azide: a POISONOUS AND HAZARDOUS SUBSTANCE which should be handled by trained staff only.
Storage:	-20 °C
Storage Comment:	Stable at -20°C for at least 1 year.
Expiry Date:	12 months



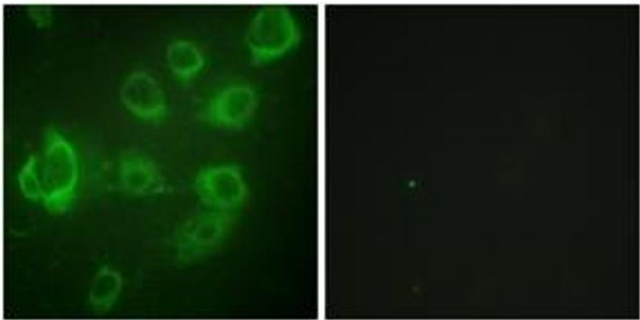
Immunohistochemistry

**Image 1.** Immunohistochemistry analysis of paraffin-embedded human brain, using Myosin regulatory light chain 2 (Phospho-Ser18) Antibody. The picture on the right is treated with the synthesized peptide.



Western Blotting

**Image 2.** Western blot analysis of extracts from LOVO cells treated with H<sub>2</sub>O<sub>2</sub> 100uM 30', using Myosin regulatory light chain 2 (Phospho-Ser18) Antibody. The lane on the right is treated with the synthesized peptide.



Immunofluorescence

**Image 3.** Immunofluorescence analysis of HuvEc cells, using Myosin regulatory light chain 2 (Phospho-Ser18) Antibody. The picture on the right is treated with the synthesized peptide.