

Datasheet for ABIN1531453
anti-BCAR1 antibody (pTyr249)



[Go to Product page](#)

2 Images

Overview

Quantity:	100 µL
Target:	BCAR1
Binding Specificity:	AA 215-264, pTyr249
Reactivity:	Human, Mouse, Rat
Host:	Rabbit
Clonality:	Polyclonal
Conjugate:	This BCAR1 antibody is un-conjugated
Application:	Western Blotting (WB), Immunohistochemistry (IHC), ELISA

Product Details

Immunogen:	The antiserum was produced against synthesized peptide derived from human p130 Cas around the phosphorylation site of Tyr249.
Isotype:	IgG
Specificity:	p130 Cas (Phospho-Tyr249) Antibody detects endogenous levels of p130 Cas only when phosphorylated at Tyr249. PhosphorylationH:Y249 M:Y253 R:Y347
Purification:	The antibody was purified from rabbit antiserum by affinity-chromatography using phospho peptide. The antibody against non-phospho peptide was removed by chromatography using corresponding non-phospho peptide.
Purity:	> 95 %

Target Details

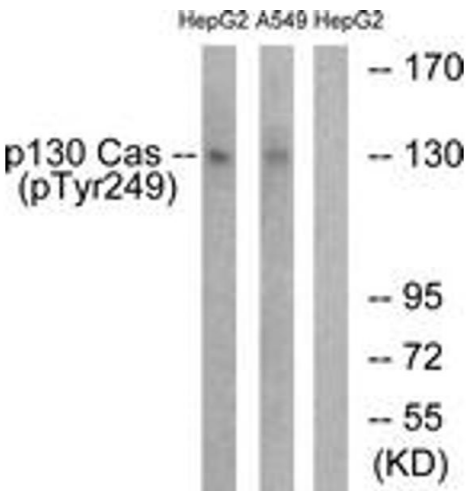
Target:	BCAR1
Alternative Name:	p130 Cas (BCAR1 Products)
Background:	Synonyms: BCA1, BCAR1, Breast cancer anti-estrogen resistance 1 protein, CAS, CRK-associated substrate, CRKAS NCBI Gene Symbol: BCAR1
Molecular Weight:	93 kDa
Gene ID:	9564
OMIM:	602941
UniProt:	P56945
Pathways:	EGFR Signaling Pathway , Neurotrophin Signaling Pathway , CXCR4-mediated Signaling Events , Platelet-derived growth Factor Receptor Signaling

Application Details

Application Notes:	WB: 1:500~1:1000 IHC: 1:50~1:100 ELISA: 1:10000
Comment:	Unigene-Number: Hs.479747 (NCBI Gene Symbol: BCAR1)
Restrictions:	For Research Use only

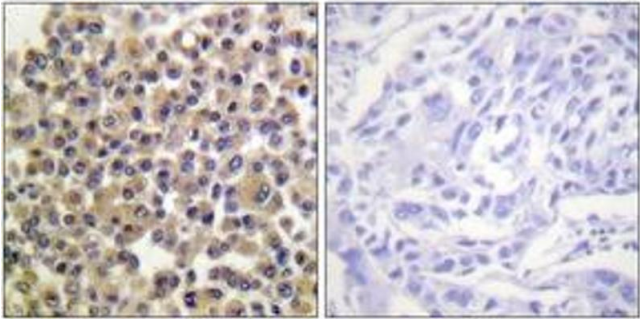
Handling

Format:	Liquid
Concentration:	1 mg/mL
Buffer:	phosphate buffered saline (without Mg ²⁺ and Ca ²⁺), pH 7.4, 150 mM NaCl, 0.02 % sodium azide and 50 % glycerol.
Preservative:	Sodium azide
Precaution of Use:	This product contains sodium azide: a POISONOUS AND HAZARDOUS SUBSTANCE which should be handled by trained staff only.
Storage:	-20 °C
Storage Comment:	Stable at -20°C for at least 1 year.
Expiry Date:	12 months



Western Blotting

Image 1. Western blot analysis of extracts from HepG2 cells treated with EGF 200ng/ml 30' and A549 cells treated with PMA 125ng/ml 30', using p130 Cas (Phospho-Tyr249) Antibody. The lane on the right is treated with the synthesized peptide.



Immunohistochemistry

Image 2. Immunohistochemistry analysis of paraffin-embedded human breast carcinoma, using p130 Cas (Phospho-Tyr249) Antibody. The picture on the right is treated with the synthesized peptide.