



Datasheet for ABIN1531462
anti-PKC alpha antibody (pThr638)



[Go to Product page](#)

2 Images

1 Publication

Overview

Quantity:	100 µL
Target:	PKC alpha (PKCa)
Binding Specificity:	AA 606-655, pThr638
Reactivity:	Human, Mouse, Rat
Host:	Rabbit
Clonality:	Polyclonal
Conjugate:	This PKC alpha antibody is un-conjugated
Application:	Western Blotting (WB), ELISA, Immunohistochemistry (IHC)

Product Details

Immunogen:	The antiserum was produced against synthesized peptide derived from human PKC alpha around the phosphorylation site of Thr638.
Isotype:	IgG
Specificity:	PKC alpha (Phospho-Thr638) Antibody detects endogenous levels of PKC alpha only when phosphorylated at Thr638. PhosphorylationH:T638 M:T638 R:T638
Purification:	The antibody was purified from rabbit antiserum by affinity-chromatography using phospho peptide. The antibody against non-phospho peptide was removed by chromatography using corresponding non-phospho peptide.
Purity:	> 95 %

Target Details

Target:	PKC alpha (PKCa)
Alternative Name:	PKC alpha (PKCa Products)
Background:	Synonyms: kinase PKC-alpha, KPCA, PKC III, PKC-A, PKC-alpha, PKC-III, PRKACA, PRKCA, Protein kinase C, alpha type NCBI Gene Symbol: PRKCA
Molecular Weight:	76 kDa
Gene ID:	5578
OMIM:	176960
UniProt:	P17252
Pathways:	WNT Signaling , TCR Signaling , EGFR Signaling Pathway , Neurotrophin Signaling Pathway , Thyroid Hormone Synthesis , cAMP Metabolic Process , Myometrial Relaxation and Contraction , Cell-Cell Junction Organization , Regulation of G-Protein Coupled Receptor Protein Signaling , G-protein mediated Events , Signaling Events mediated by VEGFR1 and VEGFR2 , Interaction of EGFR with phospholipase C-gamma , Thromboxane A2 Receptor Signaling , VEGFR1 Specific Signals , VEGF Signaling

Application Details

Application Notes:	WB: 1:500~1:1000 IHC: 1:50~1:100 ELISA: 1:20000
Comment:	Unigene-Number: Hs.531704, Hs.708867 (NCBI Gene Symbol: PRKCA)
Restrictions:	For Research Use only

Handling

Format:	Liquid
Concentration:	1 mg/mL
Buffer:	phosphate buffered saline (without Mg ²⁺ and Ca ²⁺), pH 7.4, 150 mM NaCl, 0.02 % sodium azide and 50 % glycerol.
Preservative:	Sodium azide
Precaution of Use:	This product contains sodium azide: a POISONOUS AND HAZARDOUS SUBSTANCE which should be handled by trained staff only.
Storage:	-20 °C

Handling

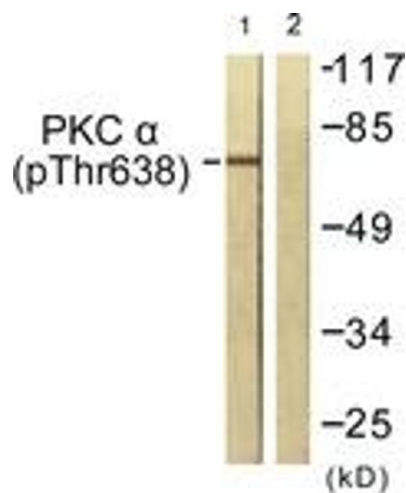
Storage Comment: Stable at -20°C for at least 1 year.

Expiry Date: 12 months

Publications

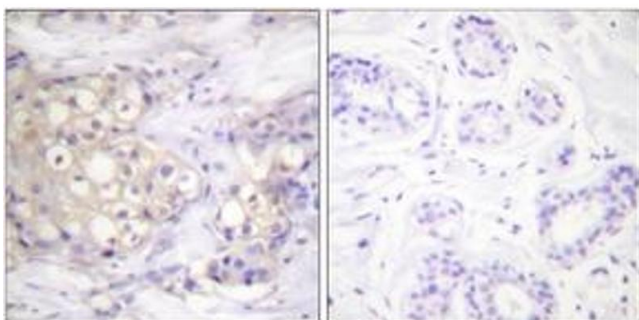
Product cited in: Huang, Cheng, Su, Lin: "Syndecan-4 Promotes Epithelial Tumor Cells Spreading and Regulates the Turnover of PKC α Activity under Mechanical Stimulation on the Elastomeric Substrates." in: **Cellular physiology and biochemistry : international journal of experimental cellular physiology, biochemistry, and pharmacology**, Vol. 36, Issue 4, pp. 1291-1304, (2015) ([PubMed](#)).

Images



Western Blotting

Image 1. Western blot analysis of extracts from NIH-3T3 cells treated with UV 15', using PKC alpha (Phospho-Thr638) Antibody. The lane on the right is treated with the synthesized peptide.



Immunohistochemistry

Image 2. Immunohistochemistry analysis of paraffin-embedded human breast carcinoma, using PKC alpha (Phospho-Thr638) Antibody. The picture on the right is treated with the synthesized peptide.