

Datasheet for ABIN1531465  
**anti-PKC theta antibody (pThr538)**



[Go to Product page](#)

2 Images

## Overview

Quantity:	100 µL
Target:	PKC theta (PRKCQ)
Binding Specificity:	AA 504-553, pThr538
Reactivity:	Human, Rat, Mouse
Host:	Rabbit
Clonality:	Polyclonal
Conjugate:	This PKC theta antibody is un-conjugated
Application:	Western Blotting (WB), Immunohistochemistry (IHC), ELISA

## Product Details

Immunogen:	The antiserum was produced against synthesized peptide derived from human PKC theta around the phosphorylation site of Thr538.
Isotype:	IgG
Specificity:	PKC theta (Phospho-Thr538) Antibody detects endogenous levels of PKC theta only when phosphorylated at Thr538. PhosphorylationH:T538 M:T538 R:T538
Purification:	The antibody was purified from rabbit antiserum by affinity-chromatography using phospho peptide. The antibody against non-phospho peptide was removed by chromatography using corresponding non-phospho peptide.
Purity:	> 95 %

## Target Details

---

Target:	PKC theta (PRKCQ)
Alternative Name:	PKC theta ( <a href="#">PRKCQ Products</a> )
Background:	Synonyms: KPCT, PKC-theta, PKCQ, PRKCQ, PRKCT, Protein kinase C, theta type, kinase PKC-theta, nPKC-theta NCBI Gene Symbol: PRKCQ
Molecular Weight:	81 kDa
Gene ID:	5588
OMIM:	600448
UniProt:	<a href="#">Q04759</a>
Pathways:	<a href="#">TCR Signaling</a> , <a href="#">Fc-epsilon Receptor Signaling Pathway</a> , <a href="#">Myometrial Relaxation and Contraction</a> , <a href="#">Regulation of G-Protein Coupled Receptor Protein Signaling</a> , <a href="#">Thromboxane A2 Receptor Signaling</a>

## Application Details

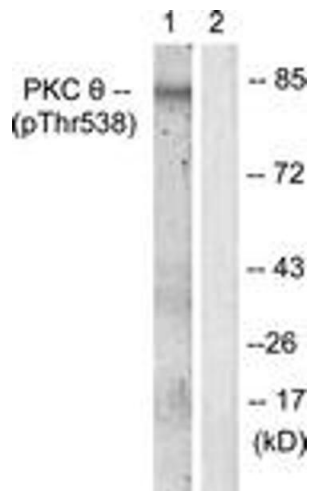
---

Application Notes:	WB: 1:500~1:1000 IHC: 1:50~1:100 ELISA: 1:5000
Comment:	Unigene-Number: Hs.498570 (NCBI Gene Symbol: PRKCQ)
Restrictions:	For Research Use only

## Handling

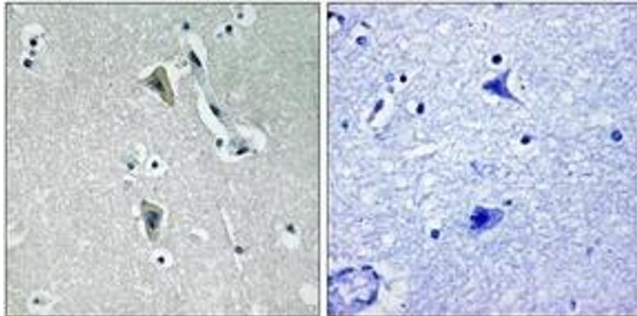
---

Format:	Liquid
Concentration:	1 mg/mL
Buffer:	phosphate buffered saline (without Mg <sup>2+</sup> and Ca <sup>2+</sup> ), pH 7.4, 150 mM NaCl, 0.02 % sodium azide and 50 % glycerol.
Preservative:	Sodium azide
Precaution of Use:	This product contains sodium azide: a POISONOUS AND HAZARDOUS SUBSTANCE which should be handled by trained staff only.
Storage:	-20 °C
Storage Comment:	Stable at -20°C for at least 1 year.
Expiry Date:	12 months



### Western Blotting

**Image 1.** Western blot analysis of extracts from Jurkat cells, using PKC  $\theta$  (Phospho-Thr538) Antibody. The lane on the right is treated with the synthesized peptide.



### Immunohistochemistry

**Image 2.** Immunohistochemistry analysis of paraffin-embedded human brain, using PKC  $\theta$  (Phospho-Thr538) Antibody. The picture on the right is treated with the synthesized peptide.