

Datasheet for ABIN1531468
anti-PLCB3 antibody (pSer537)[Go to Product page](#)

2 Images

Overview

| | |
|----------------------|--|
| Quantity: | 100 µg |
| Target: | PLCB3 |
| Binding Specificity: | AA 503-552, pSer537 |
| Reactivity: | Human, Rat, Mouse |
| Host: | Rabbit |
| Clonality: | Polyclonal |
| Conjugate: | This PLCB3 antibody is un-conjugated |
| Application: | Western Blotting (WB), Immunohistochemistry (IHC), ELISA |

Product Details

| | |
|---------------|---|
| Immunogen: | The antiserum was produced against synthesized peptide derived from human PLC beta3 around the phosphorylation site of Ser537. |
| Isotype: | IgG |
| Specificity: | PLC beta3 (Phospho-Ser537) Antibody detects endogenous levels of PLC beta3 only when phosphorylated at Ser537. PhosphorylationH:S537 M:S537 R:S535 |
| Purification: | The antibody was purified from rabbit antiserum by affinity-chromatography using phospho peptide. The antibody against non-phospho peptide was removed by chromatography using corresponding non-phospho peptide. |
| Purity: | > 95 % |

Target Details

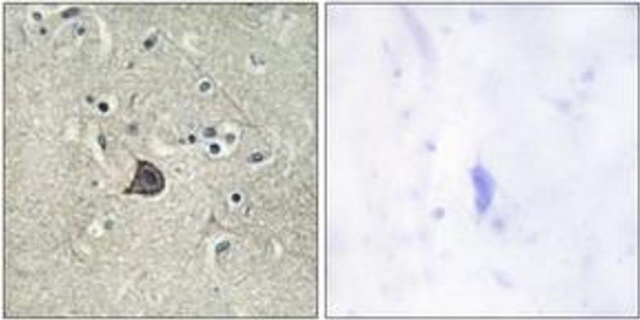
| | |
|-------------------|---|
| Target: | PLCB3 |
| Alternative Name: | PLC Beta3 (PLCB3 Products) |
| Background: | Synonyms: 1-phosphatidylinositol-4,5-bisphosphate phosphodiesterase beta 3, Phosphoinositide phospholipase C, Phospholipase C-beta-3, PLC-beta-3, PLCB3 NCBI Gene Symbol: PLCB3 |
| Molecular Weight: | 138 kDa |
| Gene ID: | 5331 |
| OMIM: | 600230 |
| UniProt: | Q01970 |
| Pathways: | WNT Signaling , Thyroid Hormone Synthesis , Myometrial Relaxation and Contraction , CXCR4-mediated Signaling Events , G-protein mediated Events |

Application Details

| | |
|--------------------|---|
| Application Notes: | WB: 1:500~1:1000 IHC: 1:50~1:100 ELISA: 1:10000 |
| Comment: | Unigene-Number: Hs.591953 (NCBI Gene Symbol: PLCB3) |
| Restrictions: | For Research Use only |

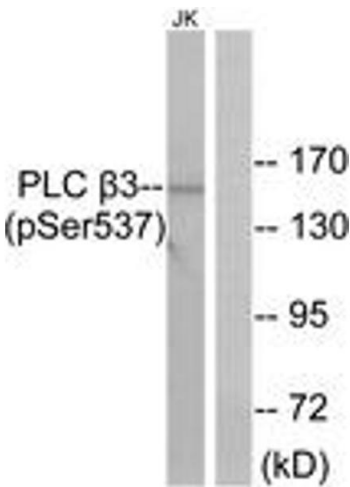
Handling

| | |
|--------------------|---|
| Format: | Liquid |
| Concentration: | 1 mg/mL |
| Buffer: | phosphate buffered saline (without Mg ²⁺ and Ca ²⁺), pH 7.4, 150 mM NaCl, 0.02 % sodium azide and 50 % glycerol. |
| Preservative: | Sodium azide |
| Precaution of Use: | This product contains sodium azide: a POISONOUS AND HAZARDOUS SUBSTANCE which should be handled by trained staff only. |
| Storage: | -20 °C |
| Storage Comment: | Stable at -20°C for at least 1 year. |
| Expiry Date: | 12 months |



Immunohistochemistry

Image 1. Immunohistochemistry analysis of paraffin-embedded human brain, using PLC beta3 (Phospho-Ser537) Antibody. The picture on the right is treated with the synthesized peptide.



Western Blotting

Image 2. Western blot analysis of extracts from Jurkat cells treated with UV 15', using PLC beta3 (Phospho-Ser537) Antibody. The lane on the right is treated with the synthesized peptide.