



[Go to Product page](#)

Datasheet for ABIN1531469
anti-PLD1 antibody (pSer561)

2 Images

Overview

Quantity:	100 µg
Target:	PLD1
Binding Specificity:	AA 527-576, pSer561
Reactivity:	Human, Mouse, Rat
Host:	Rabbit
Clonality:	Polyclonal
Conjugate:	This PLD1 antibody is un-conjugated
Application:	ELISA, Immunohistochemistry (IHC), Immunofluorescence (IF)

Product Details

Immunogen:	The antiserum was produced against synthesized peptide derived from human PLD1 around the phosphorylation site of Ser561.
Isotype:	IgG
Specificity:	PLD1 (Phospho-Ser561) Antibody detects endogenous levels of PLD1 only when phosphorylated at Ser561. PhosphorylationH:S561 M:S561 R:S561
Purification:	The antibody was purified from rabbit antiserum by affinity-chromatography using phospho peptide. The antibody against non-phospho peptide was removed by chromatography using corresponding non-phospho peptide.
Purity:	> 95 %

Target Details

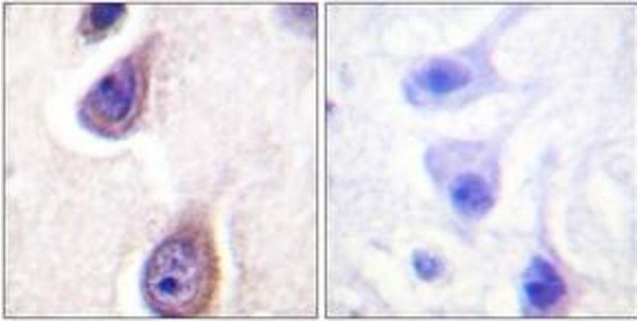
Target:	PLD1
Alternative Name:	PLD1 (PLD1 Products)
Background:	Synonyms: Choline phosphatase 1, Phosphatidylcholine-hydrolyzing phospholipase D1, Phospholipase D1 NCBI Gene Symbol: PLD1
Molecular Weight:	124 kDa
Gene ID:	5337
OMIM:	602382
UniProt:	Q13393

Application Details

Application Notes:	IHC: 1:50~1:100 IF: 1:100~1:500 ELISA: 1:1000
Comment:	Unigene-Number: Hs.382865 (NCBI Gene Symbol: PLD1)
Restrictions:	For Research Use only

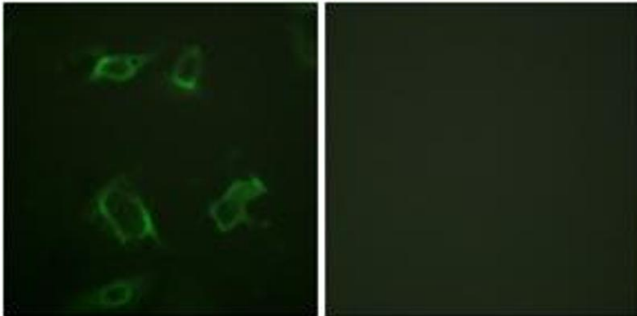
Handling

Format:	Liquid
Concentration:	1 mg/mL
Buffer:	phosphate buffered saline (without Mg ²⁺ and Ca ²⁺), pH 7.4, 150 mM NaCl, 0.02 % sodium azide and 50 % glycerol.
Preservative:	Sodium azide
Precaution of Use:	This product contains sodium azide: a POISONOUS AND HAZARDOUS SUBSTANCE which should be handled by trained staff only.
Storage:	-20 °C
Storage Comment:	Stable at -20°C for at least 1 year.
Expiry Date:	12 months



Immunohistochemistry

Image 1. Immunohistochemistry analysis of paraffin-embedded human brain, using PLD1 (Phospho-Ser561) Antibody. The picture on the right is treated with the synthesized peptide.



Immunofluorescence

Image 2. Immunofluorescence analysis of HepG2 cells, using PLD1 (Phospho-Ser561) Antibody. The picture on the right is treated with the synthesized peptide.