



Datasheet for ABIN1531476  
**anti-14-3-3 theta antibody (pSer232)**



[Go to Product page](#)

3 Images

Overview

Quantity:	100 µL
Target:	14-3-3 theta (YWHAQ)
Binding Specificity:	AA 196-245, pSer232
Reactivity:	Human, Mouse
Host:	Rabbit
Clonality:	Polyclonal
Conjugate:	This 14-3-3 theta antibody is un-conjugated
Application:	Western Blotting (WB), ELISA, Immunohistochemistry (IHC), Immunofluorescence (IF)

Product Details

Immunogen:	The antiserum was produced against synthesized peptide derived from human 14-3-3 thet/tau around the phosphorylation site of Ser232.
Isotype:	IgG
Specificity:	14-3-3 thet/tau (Phospho-Ser232) Antibody detects endogenous levels of 14-3-3 thet/tau only when phosphorylated at Ser232. PhosphorylationH:S232 M:S232
Purification:	The antibody was purified from rabbit antiserum by affinity-chromatography using phospho peptide. The antibody against non-phospho peptide was removed by chromatography using corresponding non-phospho peptide.
Purity:	> 95 %

## Target Details

---

Target:	14-3-3 theta (YWHAQ)
Abstract:	<a href="#">YWHAQ Products</a>
Background:	Synonyms: 14-3-3 protein T-cell, 14-3-3 protein tau, 1433T, 143T, HS1 protein, YWHAQ NCBI Gene Symbol: YWHAQ
Molecular Weight:	27 kDa
Gene ID:	5350
OMIM:	172405
UniProt:	<a href="#">P27348</a>
Pathways:	<a href="#">Apoptosis</a> , <a href="#">Myometrial Relaxation and Contraction</a>

## Application Details

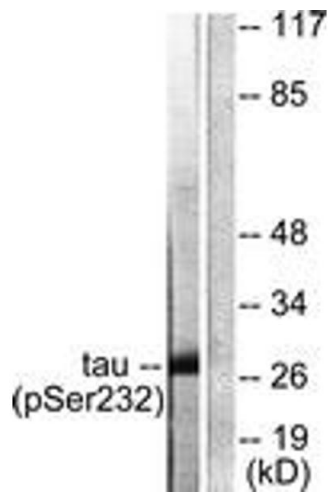
---

Application Notes:	WB: 1:500~1:1000 IHC: 1:50~1:100 IF: 1:100~1:500 ELISA: 1:5000
Comment:	Unigene-Number: Hs.170839 (NCBI Gene Symbol: YWHAQ)
Restrictions:	For Research Use only

## Handling

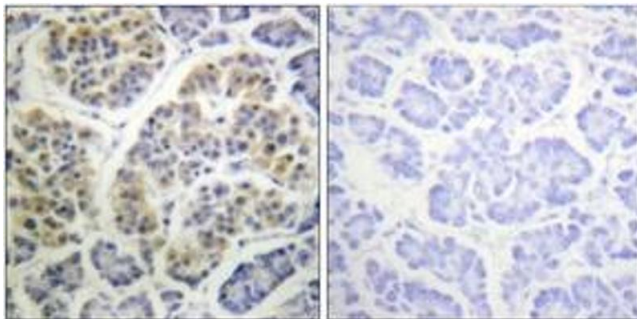
---

Format:	Liquid
Concentration:	1 mg/mL
Buffer:	phosphate buffered saline (without Mg <sup>2+</sup> and Ca <sup>2+</sup> ), pH 7.4, 150 mM NaCl, 0.02 % sodium azide and 50 % glycerol.
Preservative:	Sodium azide
Precaution of Use:	This product contains sodium azide: a POISONOUS AND HAZARDOUS SUBSTANCE which should be handled by trained staff only.
Storage:	-20 °C
Storage Comment:	Stable at -20°C for at least 1 year.
Expiry Date:	12 months



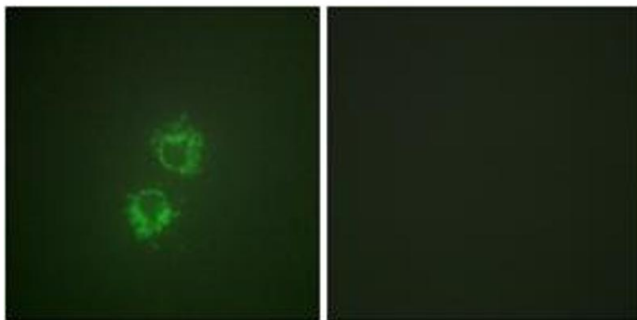
### Western Blotting

**Image 1.** Western blot analysis of extracts from HeLa cells, using 14-3-3 thet/tau (Phospho-Ser232) Antibody. The lane on the right is treated with the synthesized peptide.



### Immunohistochemistry

**Image 2.** Immunohistochemistry analysis of paraffin-embedded human pancreas, using 14-3-3 thet/tau (Phospho-Ser232) Antibody. The picture on the right is treated with the synthesized peptide.



### Immunofluorescence

**Image 3.** Immunofluorescence analysis of HeLa cells, using 14-3-3 thet/tau (Phospho-Ser232) Antibody. The picture on the right is treated with the synthesized peptide.