

Datasheet for ABIN1531479  
**anti-PFKFB2 antibody (pSer483)**



[Go to Product page](#)

2 Images

## Overview

Quantity:	100 µL
Target:	PFKFB2
Binding Specificity:	AA 451-500, pSer483
Reactivity:	Human, Mouse, Rat
Host:	Rabbit
Clonality:	Polyclonal
Conjugate:	This PFKFB2 antibody is un-conjugated
Application:	Western Blotting (WB), ELISA, Immunohistochemistry (IHC)

## Product Details

Immunogen:	The antiserum was produced against synthesized peptide derived from human PFKFB2 around the phosphorylation site of Ser483.
Isotype:	IgG
Specificity:	PFKFB2 (Phospho-Ser483) Antibody detects endogenous levels of PFKFB2 only when phosphorylated at Ser483. PhosphorylationH:S483 M:S486 R:S486
Purification:	The antibody was purified from rabbit antiserum by affinity-chromatography using phospho peptide. The antibody against non-phospho peptide was removed by chromatography using corresponding non-phospho peptide.
Purity:	> 95 %

## Target Details

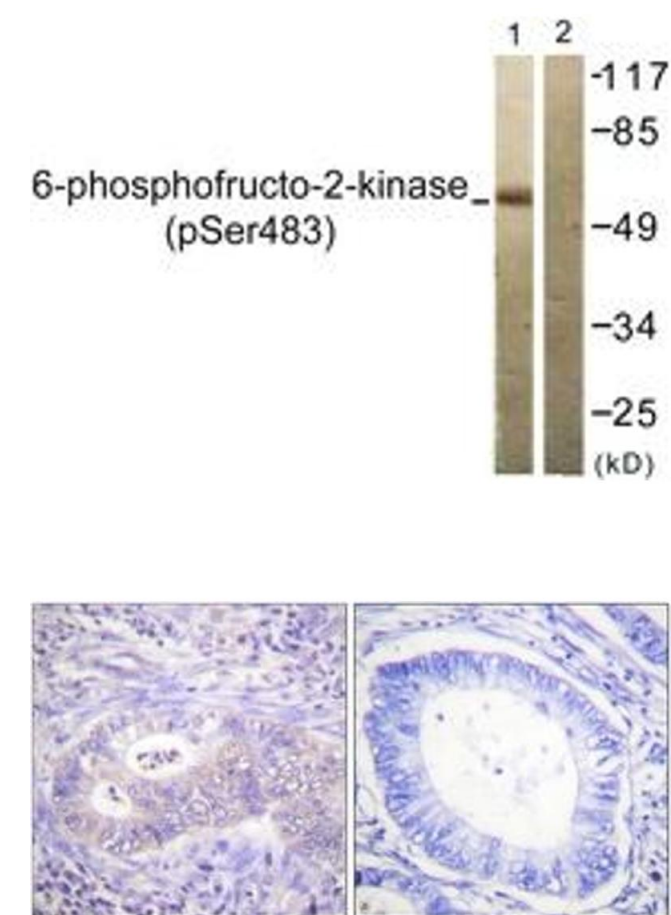
Target:	PFKFB2
Alternative Name:	PFKFB2 ( <a href="#">PFKFB2 Products</a> )
Background:	Synonyms: 6-phosphofructo-2-kinase/fructose-2,6-biphosphatase 2, PFK-2/FBPase-2, 6PF-2-K/Fru-2,6-P2ASE heart-type isozyme, 6-phosphofructo-2-kinase, Fructose-2,6-bisphosphatase, PFKFB2 NCBI Gene Symbol: F262
Molecular Weight:	58 kDa
Gene ID:	5208
OMIM:	171835
UniProt:	<a href="#">O60825</a>
Pathways:	<a href="#">PI3K-Akt Signaling</a> , <a href="#">Positive Regulation of Peptide Hormone Secretion</a> , <a href="#">Regulation of Carbohydrate Metabolic Process</a>

## Application Details

Application Notes:	WB: 1:500~1:1000 IHC: 1:50~1:100 ELISA: 1:40000
Comment:	Unigene-Number: Hs.282702 (NCBI Gene Symbol: F262)
Restrictions:	For Research Use only

## Handling

Format:	Liquid
Concentration:	1 mg/mL
Buffer:	phosphate buffered saline (without Mg <sup>2+</sup> and Ca <sup>2+</sup> ), pH 7.4, 150 mM NaCl, 0.02 % sodium azide and 50 % glycerol.
Preservative:	Sodium azide
Precaution of Use:	This product contains sodium azide: a POISONOUS AND HAZARDOUS SUBSTANCE which should be handled by trained staff only.
Storage:	-20 °C
Storage Comment:	Stable at -20°C for at least 1 year.
Expiry Date:	12 months



Western Blotting

**Image 1.** Western blot analysis of extracts from 293 cells treated with Heat shock, using PFKFB2 (Phospho-Ser483) Antibody. The lane on the right is treated with the synthesized peptide.

Immunohistochemistry

**Image 2.** Immunohistochemistry analysis of paraffin-embedded human colon carcinoma, using PFKFB2 (Phospho-Ser483) Antibody. The picture on the right is treated with the synthesized peptide.