

Datasheet for ABIN1531487
anti-ARAF antibody (pTyr302)

3 Images

[Go to Product page](#)

Overview

Quantity:	100 µg
Target:	ARAF
Binding Specificity:	AA 276-325, pTyr302
Reactivity:	Human, Mouse, Rat
Host:	Rabbit
Clonality:	Polyclonal
Conjugate:	This ARAF antibody is un-conjugated
Application:	Western Blotting (WB), ELISA, Immunohistochemistry (IHC), Immunofluorescence (IF)

Product Details

Immunogen:	The antiserum was produced against synthesized peptide derived from human A-RAF around the phosphorylation site of Tyr302.
Isotype:	IgG
Specificity:	A-RAF (Phospho-Tyr302) Antibody detects endogenous levels of A-RAF only when phosphorylated at Tyr302. PhosphorylationH:Y302 M:Y300 R:Y300
Purification:	The antibody was purified from rabbit antiserum by affinity-chromatography using phospho peptide. The antibody against non-phospho peptide was removed by chromatography using corresponding non-phospho peptide.
Purity:	> 95 %

Target Details

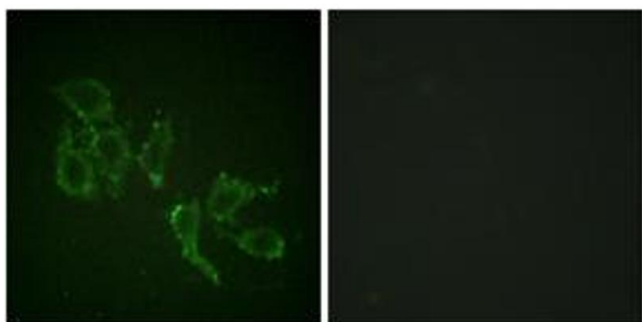
Target:	ARAF
Alternative Name:	A-RAF (ARAF Products)
Background:	Synonyms: A-Raf proto-oncogene serine/threonine-protein kinase, A-raf-1, Proto-oncogene Pks, ARAF, ARAF1, PKS, PKS2 NCBI Gene Symbol: ARAF
Molecular Weight:	67 kDa
Gene ID:	369
OMIM:	311010
UniProt:	P10398
Pathways:	MAPK Signaling , RTK Signaling , Hepatitis C

Application Details

Application Notes:	WB: 1:500~1:1000 IHC: 1:50~1:100 IF: 1:100~1:500 ELISA: 1:20000
Comment:	Unigene-Number: Hs.225936, Hs.446641 (NCBI Gene Symbol: ARAF)
Restrictions:	For Research Use only

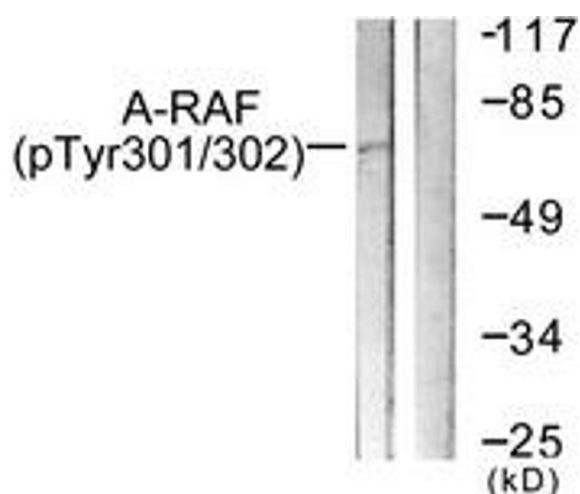
Handling

Format:	Liquid
Concentration:	1 mg/mL
Buffer:	phosphate buffered saline (without Mg ²⁺ and Ca ²⁺), pH 7.4, 150 mM NaCl, 0.02 % sodium azide and 50 % glycerol.
Preservative:	Sodium azide
Precaution of Use:	This product contains sodium azide: a POISONOUS AND HAZARDOUS SUBSTANCE which should be handled by trained staff only.
Storage:	-20 °C
Storage Comment:	Stable at -20°C for at least 1 year.
Expiry Date:	12 months



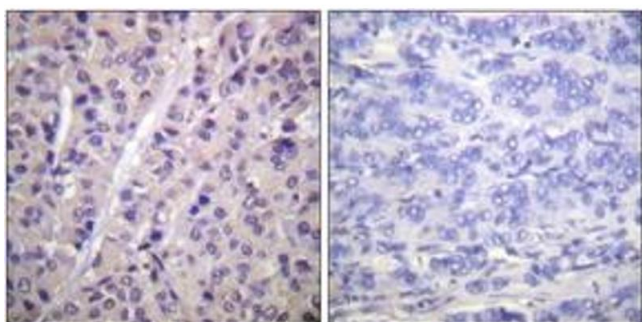
Immunofluorescence

Image 1. Immunofluorescence analysis of HepG2 cells, using A-RAF (Phospho-Tyr302) Antibody. The picture on the right is treated with the synthesized peptide.



Western Blotting

Image 2. Western blot analysis of extracts from HeLa cells treated with PMA 125ng/ml 30', using A-RAF (Phospho-Tyr302) Antibody. The lane on the right is treated with the synthesized peptide.



Immunohistochemistry

Image 3. Immunohistochemistry analysis of paraffin-embedded human breast carcinoma, using A-RAF (Phospho-Tyr302) Antibody. The picture on the right is treated with the synthesized peptide.