



[Go to Product page](#)

Datasheet for ABIN1531496
anti-SNRPE antibody (pSer602)

2 Images

Overview

Quantity:	100 µL
Target:	SNRPE
Binding Specificity:	AA 576-625, pSer602
Reactivity:	Human, Mouse, Rat
Host:	Rabbit
Clonality:	Polyclonal
Conjugate:	This SNRPE antibody is un-conjugated
Application:	Western Blotting (WB), Immunohistochemistry (IHC), ELISA

Product Details

Immunogen:	The antiserum was produced against synthesized peptide derived from human B-RAF around the phosphorylation site of Ser602.
Isotype:	IgG
Specificity:	B-RAF (Phospho-Ser602) Antibody detects endogenous levels of B-RAF only when phosphorylated at Ser602. PhosphorylationH:S602 M:S639 R:S639
Purification:	The antibody was purified from rabbit antiserum by affinity-chromatography using phospho peptide. The antibody against non-phospho peptide was removed by chromatography using corresponding non-phospho peptide.
Purity:	> 95 %

Target Details

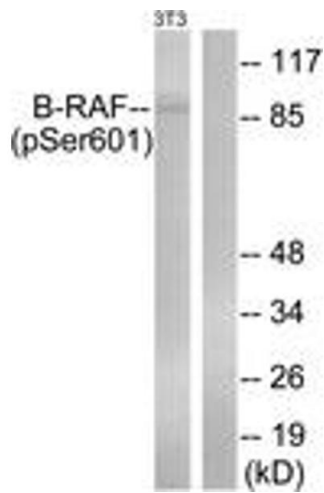
Target:	SNRPE
Alternative Name:	B-RAF (SNRPE Products)
Background:	Synonyms: B-RAF, B-RAF proto-oncogene serine/threonine-protein kinase, B-Raf proto-oncogene serine/threonine-protein kinase, BRAF, BRAF1, c-RMIL, kinase B-Raf, p94, RAFB1, RMIL, RMIL serine/threonine-protein kinase, v-Raf murine sarcoma viral oncogene homolog B1 NCBI Gene Symbol: BRAF1
Molecular Weight:	84 kDa
Gene ID:	673
OMIM:	114500
UniProt:	P15056
Pathways:	Ribonucleoprotein Complex Subunit Organization , Hepatitis C

Application Details

Application Notes:	WB: 1:500~1:1000 IHC: 1:50~1:100 ELISA: 1:20000
Comment:	Unigene-Number: Hs.550061 (NCBI Gene Symbol: BRAF1)
Restrictions:	For Research Use only

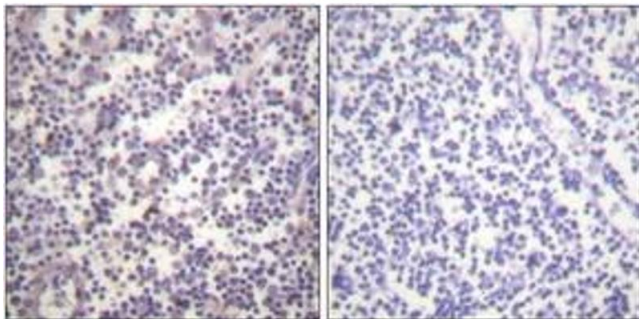
Handling

Format:	Liquid
Concentration:	1 mg/mL
Buffer:	phosphate buffered saline (without Mg ²⁺ and Ca ²⁺), pH 7.4, 150 mM NaCl, 0.02 % sodium azide and 50 % glycerol.
Preservative:	Sodium azide
Precaution of Use:	This product contains sodium azide: a POISONOUS AND HAZARDOUS SUBSTANCE which should be handled by trained staff only.
Storage:	-20 °C
Storage Comment:	Stable at -20°C for at least 1 year.
Expiry Date:	12 months



Western Blotting

Image 1. Western blot analysis of extracts from NIH-3T3 cells treated with EGF 200ng/ml 30', using B-RAF (Phospho-Ser602) Antibody. The lane on the right is treated with the synthesized peptide.



Immunohistochemistry

Image 2. Immunohistochemistry analysis of paraffin-embedded human lymph node, using B-RAF (Phospho-Ser602) Antibody. The picture on the right is treated with the synthesized peptide.