

Datasheet for ABIN1531497
anti-PTK6 antibody (pTyr447)

2 Images

[Go to Product page](#)

Overview

Quantity:	100 µg
Target:	PTK6
Binding Specificity:	AA 402-451, pTyr447
Reactivity:	Human
Host:	Rabbit
Clonality:	Polyclonal
Conjugate:	This PTK6 antibody is un-conjugated
Application:	Western Blotting (WB), ELISA, Immunofluorescence (IF)

Product Details

Immunogen:	The antiserum was produced against synthesized peptide derived from human Breast Tumor Kinase around the phosphorylation site of Tyr447.
Isotype:	IgG
Specificity:	Breast Tumor Kinase (Phospho-Tyr447) Antibody detects endogenous levels of Breast Tumor Kinase only when phosphorylated at Tyr447. PhosphorylationH:Y447
Purification:	The antibody was purified from rabbit antiserum by affinity-chromatography using phospho peptide. The antibody against non-phospho peptide was removed by chromatography using corresponding non-phospho peptide.
Purity:	> 95 %

Target Details

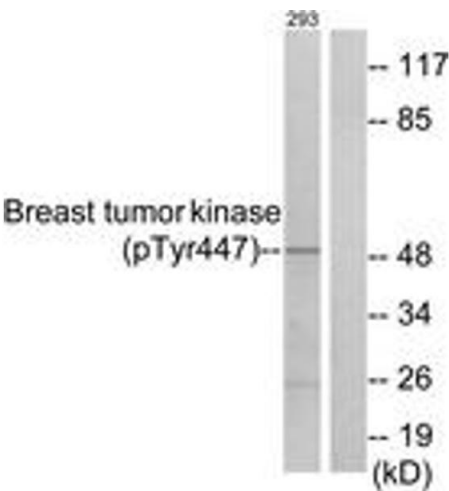
Target:	PTK6
Alternative Name:	Breast Tumor Kinase (PTK6 Products)
Background:	Synonyms: Breast tumor kinase, PTK6, Tyrosine-protein kinase 6, Tyrosine-protein kinase brk NCBI Gene Symbol: PTK6
Molecular Weight:	51 kDa
Gene ID:	5753
OMIM:	602004
UniProt:	Q13882

Application Details

Application Notes:	WB: 1:500~1:1000 IF: 1:100~1:500 ELISA: 1:1000
Comment:	Unigene-Number: Hs.51133 (NCBI Gene Symbol: PTK6)
Restrictions:	For Research Use only

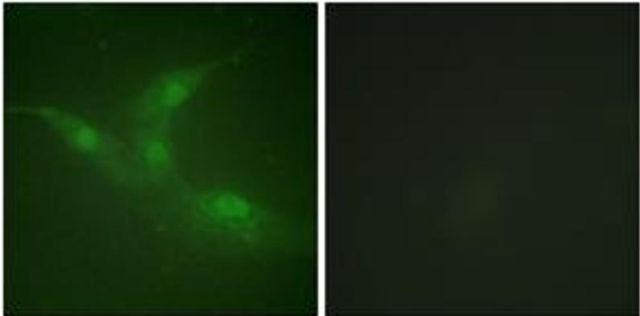
Handling

Format:	Liquid
Concentration:	1 mg/mL
Buffer:	phosphate buffered saline (without Mg ²⁺ and Ca ²⁺), pH 7.4, 150 mM NaCl, 0.02 % sodium azide and 50 % glycerol.
Preservative:	Sodium azide
Precaution of Use:	This product contains sodium azide: a POISONOUS AND HAZARDOUS SUBSTANCE which should be handled by trained staff only.
Storage:	-20 °C
Storage Comment:	Stable at -20°C for at least 1 year.
Expiry Date:	12 months



Western Blotting

Image 1. Western blot analysis of extracts from 293 cells treated with EGF 200ng/ml 30', using Breast Tumor Kinase (Phospho-Tyr447) Antibody. The lane on the right is treated with the synthesized peptide.



Immunofluorescence

Image 2. Immunofluorescence analysis of NIH-3T3 cells, using Breast Tumor Kinase (Phospho-Tyr447) Antibody. The picture on the right is treated with the synthesized peptide.