

Datasheet for ABIN1531506
anti-PKC delta antibody (pTyr52)

3 Images

[Go to Product page](#)

Overview

Quantity:	100 µg
Target:	PKC delta (PKCd)
Binding Specificity:	AA 18-67, pTyr52
Reactivity:	Human, Mouse, Rat
Host:	Rabbit
Clonality:	Polyclonal
Conjugate:	This PKC delta antibody is un-conjugated
Application:	Western Blotting (WB), ELISA, Immunohistochemistry (IHC), Immunofluorescence (IF)

Product Details

Immunogen:	The antiserum was produced against synthesized peptide derived from human PKC delta around the phosphorylation site of Tyr52.
Isotype:	IgG
Specificity:	PKC delta (Phospho-Tyr52) Antibody detects endogenous levels of PKC delta only when phosphorylated at Tyr52. PhosphorylationH:Y52 M:Y52 R:Y52
Purification:	The antibody was purified from rabbit antiserum by affinity-chromatography using phospho peptide. The antibody against non-phospho peptide was removed by chromatography using corresponding non-phospho peptide.
Purity:	> 95 %

Target Details

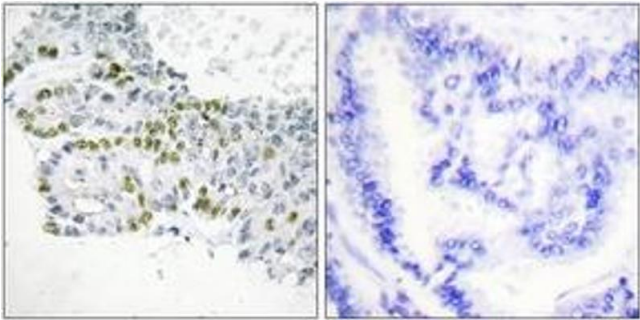
Target:	PKC delta (PKCd)
Alternative Name:	PKC delta (PKCd Products)
Background:	Synonyms: KPCD, PKC-delta, PRKCD, kinase PKC-delta, nPKC-delta NCBI Gene Symbol: PRKCD
Molecular Weight:	77 kDa
Gene ID:	5580
OMIM:	176977
UniProt:	Q05655
Pathways:	Interferon-gamma Pathway , EGFR Signaling Pathway , Neurotrophin Signaling Pathway , Thyroid Hormone Synthesis , Regulation of Actin Filament Polymerization , Carbohydrate Homeostasis , Myometrial Relaxation and Contraction , M Phase , G-protein mediated Events , Dicarboxylic Acid Transport , Positive Regulation of Response to DNA Damage Stimulus , Interaction of EGFR with phospholipase C-gamma , Thromboxane A2 Receptor Signaling , Lipid Metabolism

Application Details

Application Notes:	WB: 1:500~1:1000 IHC: 1:50~1:100 IF: 1:100~1:500 ELISA: 1:40000
Comment:	Unigene-Number: Hs.155342 (NCBI Gene Symbol: PRKCD)
Restrictions:	For Research Use only

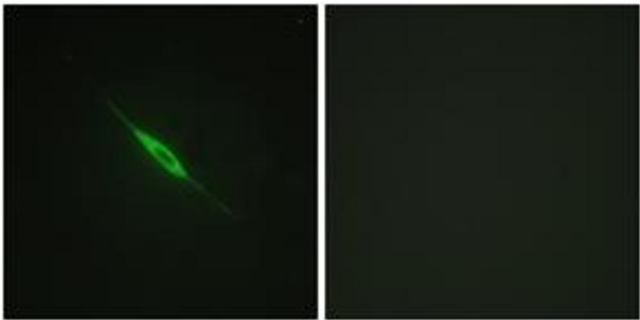
Handling

Format:	Liquid
Concentration:	1 mg/mL
Buffer:	phosphate buffered saline (without Mg ²⁺ and Ca ²⁺), pH 7.4, 150 mM NaCl, 0.02 % sodium azide and 50 % glycerol.
Preservative:	Sodium azide
Precaution of Use:	This product contains sodium azide: a POISONOUS AND HAZARDOUS SUBSTANCE which should be handled by trained staff only.
Storage:	-20 °C
Storage Comment:	Stable at -20°C for at least 1 year.



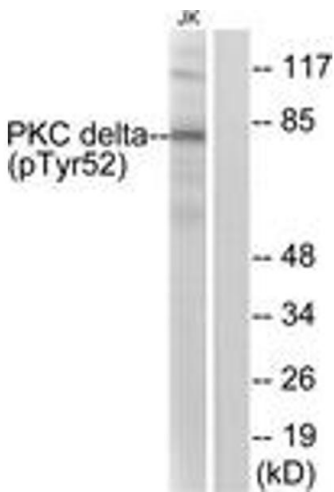
Immunohistochemistry

Image 1. Immunohistochemistry analysis of paraffin-embedded human lung carcinoma, using PKC delta (Phospho-Tyr52) Antibody. The picture on the right is treated with the synthesized peptide.



Immunofluorescence

Image 2. Immunofluorescence analysis of NIH-3T3 cells, using PKC delta (Phospho-Tyr52) Antibody. The picture on the right is treated with the synthesized peptide.



Western Blotting

Image 3. Western blot analysis of extracts from Jurkat cells treated with starved 24h, using PKC delta (Phospho-Tyr52) Antibody. The lane on the right is treated with the synthesized peptide.