

Datasheet for ABIN1531508
anti-PKC antibody (pThr497)

3 Images

[Go to Product page](#)

Overview

Quantity:	100 µg
Target:	PKC (PKC pan)
Binding Specificity:	AA 623-672, pThr497
Reactivity:	Human, Mouse, Rat
Host:	Rabbit
Clonality:	Polyclonal
Conjugate:	This PKC antibody is un-conjugated
Application:	Western Blotting (WB), Immunofluorescence (IF), Immunohistochemistry (IHC), ELISA

Product Details

Immunogen:	The antiserum was produced against synthesized peptide derived from human PKC-pan around the phosphorylation site of Thr497.
Isotype:	IgG
Specificity:	PKC-pan (Phospho-Thr497) Antibody detects endogenous levels of PKC-pan only when phosphorylated at Thr497. PhosphorylationH:T497/500/507/566/514/512/538/410 M:T497/500/505/566/514/513/538/410 R:T497/500/505/566/514/513/538/410
Purification:	The antibody was purified from rabbit antiserum by affinity-chromatography using phospho peptide. The antibody against non-phospho peptide was removed by chromatography using corresponding non-phospho peptide.
Purity:	> 95 %

Target Details

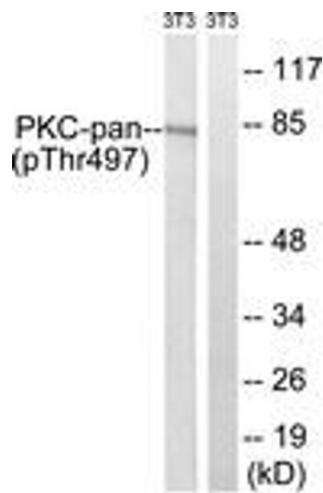
Target:	PKC (PKC pan)
Alternative Name:	PKC (PKC pan Products)
Background:	Synonyms: KPCA, PKC III, PKC-A, PKC-III, PKC-alpha, PRKACA, PRKCA, Protein kinase C, alpha type, kinase PKC-alpha PKC-delta, PRKCD, kinase PKC-delta, nPKC-delta PKC-epsilon, PKCEA, PRKCE, epsilon type, kinase PKC-epsilon, nPKC-epsilon NCBI Gene Symbol: PRKCA
Molecular Weight:	76 kDa
Gene ID:	5578, 5579, 5580
OMIM:	176960
UniProt:	P17252 , P05771 , Q05655 , Q02156 , P05129 , P24723 , Q04759 , Q05513
Pathways:	Positive Regulation of Response to DNA Damage Stimulus

Application Details

Application Notes:	WB: 1:500~1:1000 IHC: 1:50~1:100 IF: 1:100~1:500 ELISA: 1:40000
Comment:	Unigene-Number: Hs.531704, Hs.708867, Hs.460355, Hs.155342, Hs.580351, Hs.631564, Hs.333907, Hs.498570, Hs.496255 (NCBI Gene Symbol: PRKCA)
Restrictions:	For Research Use only

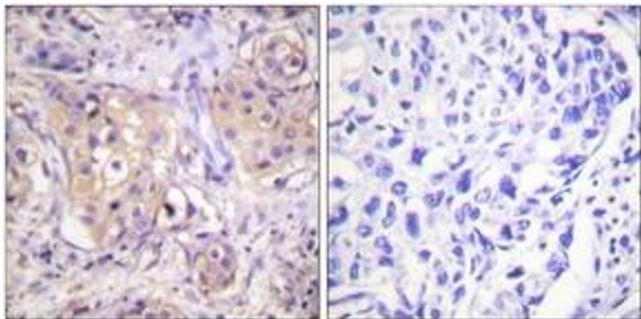
Handling

Format:	Liquid
Concentration:	1 mg/mL
Buffer:	phosphate buffered saline (without Mg ²⁺ and Ca ²⁺), pH 7.4, 150 mM NaCl, 0.02 % sodium azide and 50 % glycerol.
Preservative:	Sodium azide
Precaution of Use:	This product contains sodium azide: a POISONOUS AND HAZARDOUS SUBSTANCE which should be handled by trained staff only.
Storage:	-20 °C
Storage Comment:	Stable at -20°C for at least 1 year.
Expiry Date:	12 months



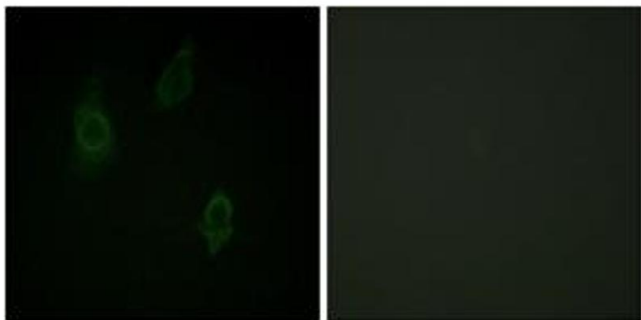
Western Blotting

Image 1. Western blot analysis of extracts from NIH-3T3 cells treated with PMA 250ng/ml 15', using PKC-pan (Phospho-Thr497) Antibody. The lane on the right is treated with the synthesized peptide.



Immunohistochemistry

Image 2. Immunohistochemistry analysis of paraffin-embedded human breast carcinoma, using PKC-pan (Phospho-Thr497) Antibody. The picture on the right is treated with the synthesized peptide.



Immunofluorescence

Image 3. Immunofluorescence analysis of HepG2 cells, using PKC-pan (Phospho-Thr497) Antibody. The picture on the right is treated with the synthesized peptide.