

Datasheet for ABIN1531509
anti-PKC theta antibody (pSer695)



[Go to Product page](#)

2 Images

Overview

Quantity:	100 µL
Target:	PKC theta (PRKCQ)
Binding Specificity:	AA 657-706, pSer695
Reactivity:	Human
Host:	Rabbit
Clonality:	Polyclonal
Conjugate:	This PKC theta antibody is un-conjugated
Application:	Western Blotting (WB), Immunohistochemistry (IHC), ELISA

Product Details

Immunogen:	The antiserum was produced against synthesized peptide derived from human PKC theta around the phosphorylation site of Ser695.
Isotype:	IgG
Specificity:	PKC theta (Phospho-Ser695) Antibody detects endogenous levels of PKC theta only when phosphorylated at Ser695. PhosphorylationH:S695
Purification:	The antibody was purified from rabbit antiserum by affinity-chromatography using phospho peptide. The antibody against non-phospho peptide was removed by chromatography using corresponding non-phospho peptide.
Purity:	> 95 %

Target Details

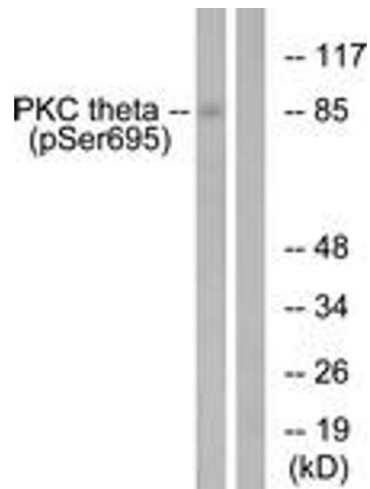
Target:	PKC theta (PRKCQ)
Alternative Name:	PKC theta (PRKCQ Products)
Background:	Synonyms: KPCT, PKC-theta, PKCQ, PRKCQ, PRKCT, Protein kinase C, theta type, kinase PKC-theta, nPKC-theta NCBI Gene Symbol: PRKCQ
Molecular Weight:	81 kDa
Gene ID:	5588
OMIM:	600448
UniProt:	Q04759
Pathways:	TCR Signaling , Fc-epsilon Receptor Signaling Pathway , Myometrial Relaxation and Contraction , Regulation of G-Protein Coupled Receptor Protein Signaling , Thromboxane A2 Receptor Signaling

Application Details

Application Notes:	WB: 1:500~1:1000 IHC: 1:50~1:100 ELISA: 1:5000
Comment:	Unigene-Number: Hs.498570 (NCBI Gene Symbol: PRKCQ)
Restrictions:	For Research Use only

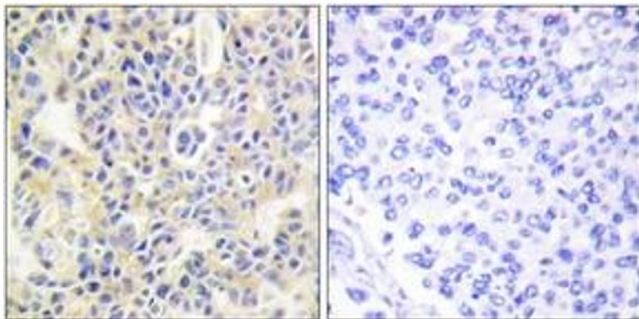
Handling

Format:	Liquid
Concentration:	1 mg/mL
Buffer:	phosphate buffered saline (without Mg ²⁺ and Ca ²⁺), pH 7.4, 150 mM NaCl, 0.02 % sodium azide and 50 % glycerol.
Preservative:	Sodium azide
Precaution of Use:	This product contains sodium azide: a POISONOUS AND HAZARDOUS SUBSTANCE which should be handled by trained staff only.
Storage:	-20 °C
Storage Comment:	Stable at -20°C for at least 1 year.
Expiry Date:	12 months



Western Blotting

Image 1. Western blot analysis of extracts from Jurkat cells treated with EGF 200ng/ml 15', using PKC theta (Phospho-Ser695) Antibody. The lane on the right is treated with the synthesized peptide.



Immunohistochemistry

Image 2. Immunohistochemistry analysis of paraffin-embedded human breast carcinoma, using PKC theta (Phospho-Ser695) Antibody. The picture on the left is treated with the synthesized peptide.