

Datasheet for ABIN1531514
anti-PTPN1 antibody (pSer50)

2 Images



[Go to Product page](#)

Overview

Quantity:	100 µL
Target:	PTPN1
Binding Specificity:	AA 16-65, pSer50
Reactivity:	Human, Mouse, Rat
Host:	Rabbit
Clonality:	Polyclonal
Conjugate:	This PTPN1 antibody is un-conjugated
Application:	Western Blotting (WB), ELISA, Immunohistochemistry (IHC)

Product Details

Immunogen:	The antiserum was produced against synthesized peptide derived from human PTP1B around the phosphorylation site of Ser50.
Isotype:	IgG
Specificity:	PTP1B (Phospho-Ser50) Antibody detects endogenous levels of PTP1B only when phosphorylated at Ser50. PhosphorylationH:S50 M:S50 R:S50
Purification:	The antibody was purified from rabbit antiserum by affinity-chromatography using phospho peptide. The antibody against non-phospho peptide was removed by chromatography using corresponding non-phospho peptide.
Purity:	> 95 %

Target Details

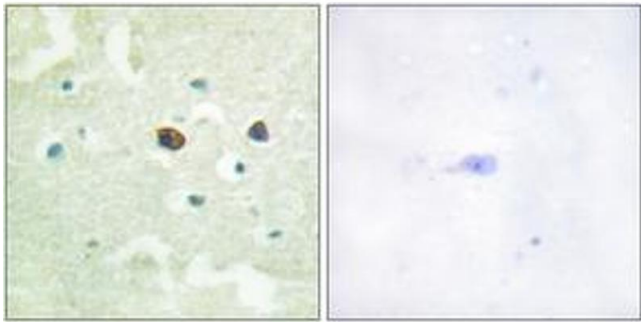
Target:	PTPN1
Alternative Name:	PTP1B (PTPN1 Products)
Background:	Synonyms: CPTP1, Protein-protein-tyrosine phosphatase HA2, Protein-tyrosine phosphatase 1B, Protein-tyrosine phosphatase, non-receptor type 1, PTN1, PTP-1B, PTP-HA2, PTPN1 NCBI Gene Symbol: PTPN1
Molecular Weight:	49 kDa
Gene ID:	5770
OMIM:	176885
UniProt:	P18031
Pathways:	TLR Signaling , Response to Growth Hormone Stimulus , ER-Nucleus Signaling , Platelet-derived growth Factor Receptor Signaling

Application Details

Application Notes:	WB: 1:500~1:1000 IHC: 1:50~1:100 ELISA: 1:40000
Comment:	Unigene-Number: Hs.417549 (NCBI Gene Symbol: PTPN1)
Restrictions:	For Research Use only

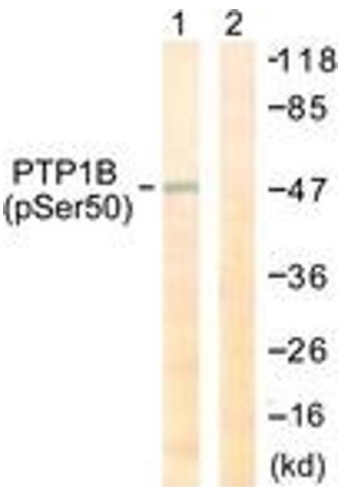
Handling

Format:	Liquid
Concentration:	1 mg/mL
Buffer:	phosphate buffered saline (without Mg2+ and Ca2+), pH 7.4, 150 mM NaCl, 0.02 % sodium azide and 50 % glycerol.
Preservative:	Sodium azide
Precaution of Use:	This product contains sodium azide: a POISONOUS AND HAZARDOUS SUBSTANCE which should be handled by trained staff only.
Storage:	-20 °C
Storage Comment:	Stable at -20°C for at least 1 year.
Expiry Date:	12 months



Immunohistochemistry

Image 1. Immunohistochemistry analysis of paraffin-embedded human brain, using PTP1B (Phospho-Ser50) Antibody. The picture on the right is treated with the synthesized peptide.



Western Blotting

Image 2. Western blot analysis of extracts from COS7 cells treated with UV 30', using PTP1B (Phospho-Ser50) Antibody. The lane on the right is treated with the synthesized peptide.