

Datasheet for ABIN1531515

**anti-Retinoblastoma Protein (Rb) antibody (pSer811)**[Go to Product page](#)**2** Images

## Overview

Quantity:	100 µL
Target:	Retinoblastoma Protein (Rb) (Rb Protein)
Binding Specificity:	AA 771-820, pSer811
Reactivity:	Human, Mouse, Rat
Host:	Rabbit
Clonality:	Polyclonal
Conjugate:	This Retinoblastoma Protein (Rb) antibody is un-conjugated
Application:	Western Blotting (WB), ELISA, Immunofluorescence (IF)

## Product Details

Immunogen:	The antiserum was produced against synthesized peptide derived from human Retinoblastoma around the phosphorylation site of Ser811.
Isotype:	IgG
Specificity:	Retinoblastoma (Phospho-Ser811) Antibody detects endogenous levels of Retinoblastoma only when phosphorylated at Ser811. PhosphorylationH:S811 M:S804 R:S782
Purification:	The antibody was purified from rabbit antiserum by affinity-chromatography using phospho peptide. The antibody against non-phospho peptide was removed by chromatography using corresponding non-phospho peptide.
Purity:	> 95 %

## Target Details

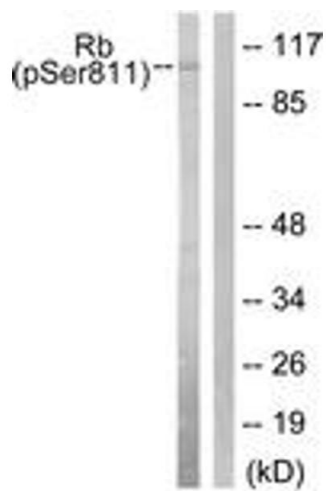
Target:	Retinoblastoma Protein (Rb) (Rb Protein)
Abstract:	<a href="#">Rb Protein Products</a>
Background:	Synonyms: P105-RB, PP105, PP110, RB-1, RB1, retinoblastoma gene, Retinoblastoma-associated protein NCBI Gene Symbol: RB1
Molecular Weight:	106 kDa
Gene ID:	5925
OMIM:	109800
UniProt:	<a href="#">P06400</a>
Pathways:	<a href="#">Mitotic G1-G1/S Phases</a>

## Application Details

Application Notes:	WB: 1:500~1:1000 IF: 1:100~1:500 ELISA: 1:1000
Comment:	Unigene-Number: Hs.408528 (NCBI Gene Symbol: RB1)
Restrictions:	For Research Use only

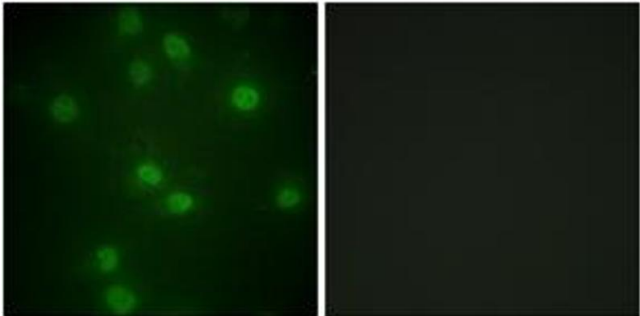
## Handling

Format:	Liquid
Concentration:	1 mg/mL
Buffer:	phosphate buffered saline (without Mg <sup>2+</sup> and Ca <sup>2+</sup> ), pH 7.4, 150 mM NaCl, 0.02 % sodium azide and 50 % glycerol.
Preservative:	Sodium azide
Precaution of Use:	This product contains sodium azide: a POISONOUS AND HAZARDOUS SUBSTANCE which should be handled by trained staff only.
Storage:	-20 °C
Storage Comment:	Stable at -20°C for at least 1 year.
Expiry Date:	12 months



#### Western Blotting

**Image 1.** Western blot analysis of extracts from K562 cells, using Retinoblastoma (Phospho-Ser811) Antibody. The lane on the right is treated with the synthesized peptide.



#### Immunofluorescence

**Image 2.** Immunofluorescence analysis of HuvEc cells, using Retinoblastoma (Phospho-Ser811) Antibody. The picture on the right is treated with the synthesized peptide.