

Datasheet for ABIN1531527
anti-CEBPE antibody (pThr74)

3 Images

[Go to Product page](#)

Overview

Quantity:	100 µg
Target:	CEBPE
Binding Specificity:	AA 40-89, pThr74
Reactivity:	Human
Host:	Rabbit
Clonality:	Polyclonal
Conjugate:	This CEBPE antibody is un-conjugated
Application:	Western Blotting (WB), ELISA, Immunohistochemistry (IHC), Immunofluorescence (IF)

Product Details

Immunogen:	The antiserum was produced against synthesized peptide derived from human C/EBP-epsilon around the phosphorylation site of Thr74.
Isotype:	IgG
Specificity:	C/EBP-epsilon (Phospho-Thr74) Antibody detects endogenous levels of C/EBP-epsilon only when phosphorylated at Thr74. PhosphorylationH:T74
Purification:	The antibody was purified from rabbit antiserum by affinity-chromatography using phospho peptide. The antibody against non-phospho peptide was removed by chromatography using corresponding non-phospho peptide.
Purity:	> 95 %

Target Details

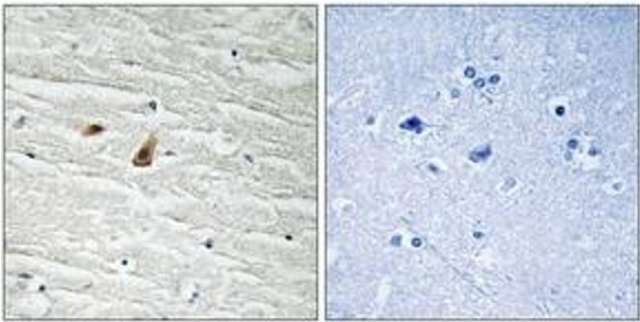
Target:	CEBPE
Alternative Name:	C/EBP-epsilon (CEBPE Products)
Background:	Synonyms: C/EBP epsilon, CCAAT/enhancer binding protein epsilon, CEBPE NCBI Gene Symbol: CEBPE
Molecular Weight:	30 kDa
Gene ID:	1053
OMIM:	600749
UniProt:	Q15744
Pathways:	Cellular Response to Molecule of Bacterial Origin

Application Details

Application Notes:	WB: 1:500~1:1000 IHC: 1:50~1:100 IF: 1:100~1:500 ELISA: 1:20000
Comment:	Unigene-Number: Hs.558308 (NCBI Gene Symbol: CEBPE)
Restrictions:	For Research Use only

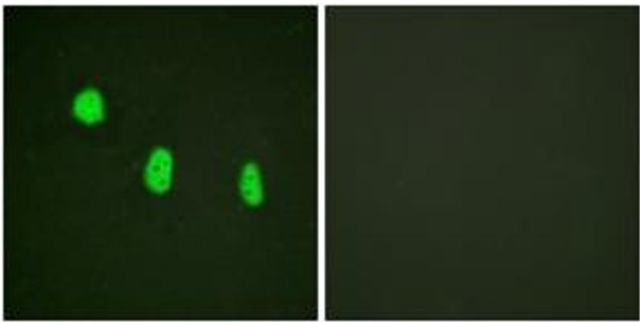
Handling

Format:	Liquid
Concentration:	1 mg/mL
Buffer:	phosphate buffered saline (without Mg ²⁺ and Ca ²⁺), pH 7.4, 150 mM NaCl, 0.02 % sodium azide and 50 % glycerol.
Preservative:	Sodium azide
Precaution of Use:	This product contains sodium azide: a POISONOUS AND HAZARDOUS SUBSTANCE which should be handled by trained staff only.
Storage:	-20 °C
Storage Comment:	Stable at -20°C for at least 1 year.
Expiry Date:	12 months



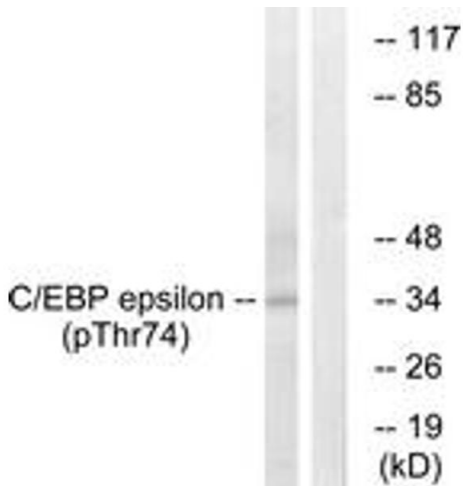
Immunohistochemistry

Image 1. Immunohistochemistry analysis of paraffin-embedded human brain, using C/EBP-epsilon (Phospho-Thr74) Antibody. The picture on the right is treated with the synthesized peptide.



Immunofluorescence

Image 2. Immunofluorescence analysis of HeLa cells, using C/EBP-epsilon (Phospho-Thr74) Antibody. The picture on the right is treated with the synthesized peptide.



Western Blotting

Image 3. Western blot analysis of extracts from HuvEc cells treated with UV 15', using C/EBP-epsilon (Phospho-Thr74) Antibody. The lane on the right is treated with the synthesized peptide.