

Datasheet for ABIN1531530  
**anti-CAMK1 antibody (pThr177)**

## 3 Images

[Go to Product page](#)

## Overview

Quantity:	100 µg
Target:	CAMK1
Binding Specificity:	AA 143-192, pThr177
Reactivity:	Human, Mouse, Rat
Host:	Rabbit
Clonality:	Polyclonal
Conjugate:	This CAMK1 antibody is un-conjugated
Application:	Western Blotting (WB), ELISA, Immunohistochemistry (IHC), Immunofluorescence (IF)

## Product Details

Immunogen:	The antiserum was produced against synthesized peptide derived from human CaMK1-alpha around the phosphorylation site of Thr177.
Isotype:	IgG
Specificity:	CaMK1-alpha (Phospho-Thr177) Antibody detects endogenous levels of CaMK1-alpha only when phosphorylated at Thr177. PhosphorylationH:T177 M:T177 R:T177
Purification:	The antibody was purified from rabbit antiserum by affinity-chromatography using phospho peptide. The antibody against non-phospho peptide was removed by chromatography using corresponding non-phospho peptide.
Purity:	> 95 %

## Target Details

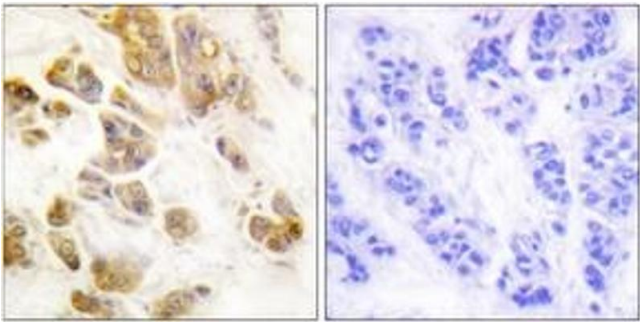
Target:	CAMK1
Abstract:	<a href="#">CAMK1 Products</a>
Background:	Synonyms: CAM kinase I, CAMK1, Calcium/calmodulin-dependent protein kinase type I, KCC1, KCC1A, kinase CaMK1-alpha NCBI Gene Symbol: CAMK1
Molecular Weight:	41 kDa
Gene ID:	8536
OMIM:	604998
UniProt:	<a href="#">Q14012</a>
Pathways:	<a href="#">Myometrial Relaxation and Contraction</a> , <a href="#">Regulation of Muscle Cell Differentiation</a> , <a href="#">Smooth Muscle Cell Migration</a>

## Application Details

Application Notes:	WB: 1:500~1:1000 IHC: 1:50~1:100 IF: 1:100~1:500 ELISA: 1:5000
Comment:	Unigene-Number: Hs.434875 (NCBI Gene Symbol: CAMK1)
Restrictions:	For Research Use only

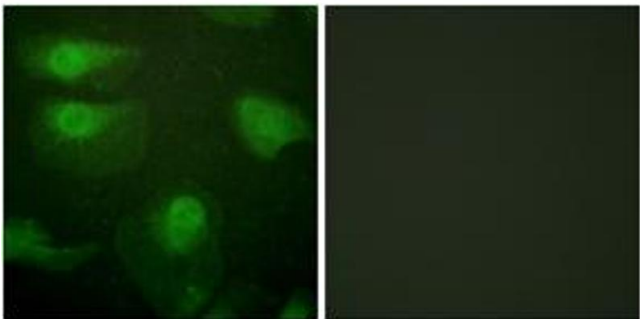
## Handling

Format:	Liquid
Concentration:	1 mg/mL
Buffer:	phosphate buffered saline (without Mg <sup>2+</sup> and Ca <sup>2+</sup> ), pH 7.4, 150 mM NaCl, 0.02 % sodium azide and 50 % glycerol.
Preservative:	Sodium azide
Precaution of Use:	This product contains sodium azide: a POISONOUS AND HAZARDOUS SUBSTANCE which should be handled by trained staff only.
Storage:	-20 °C
Storage Comment:	Stable at -20°C for at least 1 year.
Expiry Date:	12 months



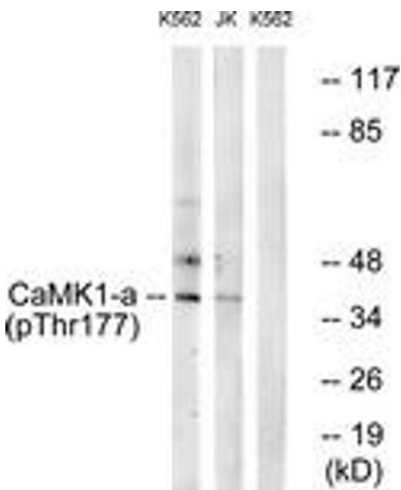
Immunohistochemistry

**Image 1.** Immunohistochemistry analysis of paraffin-embedded human breast carcinoma, using CaMK1-alpha (Phospho-Thr177) Antibody. The picture on the right is treated with the synthesized peptide.



Immunofluorescence

**Image 2.** Immunofluorescence analysis of HeLa cells, using CaMK1-alpha (Phospho-Thr177) Antibody. The picture on the right is treated with the synthesized peptide.



Western Blotting

**Image 3.** Western blot analysis of extracts from K562 cells treated with insulin 0.01U/ml 15' and Jurkat cells treated with insulin 0.01U/ml 15', using CaMK1-alpha (Phospho-Thr177) Antibody. The lane on the right is treated with the synthesized peptide.