



[Go to Product page](#)

Datasheet for ABIN1531541
anti-CD226 antibody (pSer329)

3 Images

Overview

| | |
|----------------------|---|
| Quantity: | 100 µL |
| Target: | CD226 |
| Binding Specificity: | AA 287-336, pSer329 |
| Reactivity: | Human, Mouse |
| Host: | Rabbit |
| Clonality: | Polyclonal |
| Conjugate: | This CD226 antibody is un-conjugated |
| Application: | Western Blotting (WB), ELISA, Immunohistochemistry (IHC), Immunofluorescence (IF) |

Product Details

| | |
|---------------|---|
| Immunogen: | The antiserum was produced against synthesized peptide derived from human CD226/DNAM-1 around the phosphorylation site of Ser329. |
| Isotype: | IgG |
| Specificity: | CD226/DNAM-1 (Phospho-Ser329) Antibody detects endogenous levels of CD226/DNAM-1 only when phosphorylated at Ser329. PhosphorylationH:S329 M:S326 |
| Purification: | The antibody was purified from rabbit antiserum by affinity-chromatography using phospho peptide. The antibody against non-phospho peptide was removed by chromatography using corresponding non-phospho peptide. |
| Purity: | > 95 % |

Target Details

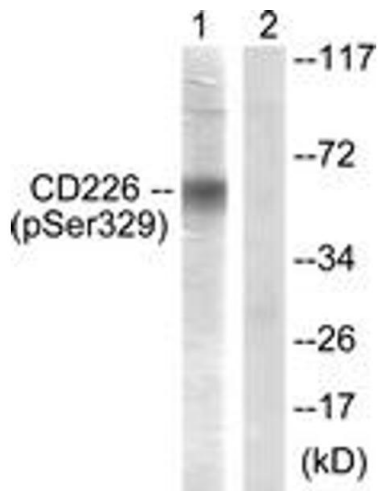
| | |
|-------------------|--|
| Target: | CD226 |
| Alternative Name: | CD226/DNAM-1 (CD226 Products) |
| Background: | Synonyms: CD226, DNAM1, DNAX accessory molecule-1, PTA1, TLIISA1, adhesion glycoprotein, platelet and T cell activation antigen 1 NCBI Gene Symbol: CD226 |
| Molecular Weight: | 38 kDa |
| Gene ID: | 10666 |
| OMIM: | 605397 |
| UniProt: | Q15762 |
| Pathways: | Regulation of Leukocyte Mediated Immunity , Positive Regulation of Immune Effector Process , Cancer Immune Checkpoints |

Application Details

| | |
|--------------------|---|
| Application Notes: | WB: 1:500~1:1000 IHC: 1:50~1:100 IF: 1:100~1:500 ELISA: 1:40000 |
| Comment: | Unigene-Number: Hs.660130 (NCBI Gene Symbol: CD226) |
| Restrictions: | For Research Use only |

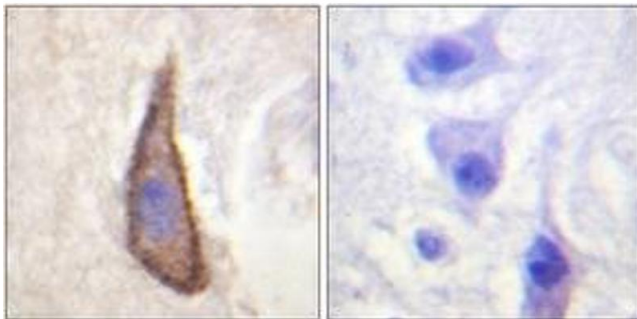
Handling

| | |
|--------------------|---|
| Format: | Liquid |
| Concentration: | 1 mg/mL |
| Buffer: | phosphate buffered saline (without Mg ²⁺ and Ca ²⁺), pH 7.4, 150 mM NaCl, 0.02 % sodium azide and 50 % glycerol. |
| Preservative: | Sodium azide |
| Precaution of Use: | This product contains sodium azide: a POISONOUS AND HAZARDOUS SUBSTANCE which should be handled by trained staff only. |
| Storage: | -20 °C |
| Storage Comment: | Stable at -20°C for at least 1 year. |
| Expiry Date: | 12 months |



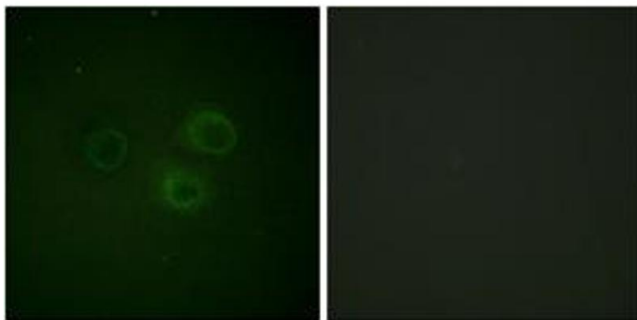
Western Blotting

Image 1. Western blot analysis of extracts from COS7 cells, using CD226/DNAM-1 (Phospho-Ser329) Antibody. The lane on the right is treated with the synthesized peptide.



Immunohistochemistry

Image 2. Immunohistochemistry analysis of paraffin-embedded human brain, using CD226/DNAM-1 (Phospho-Ser329) Antibody. The picture on the right is treated with the synthesized peptide.



Immunofluorescence

Image 3. Immunofluorescence analysis of A549 cells, using CD226/DNAM-1 (Phospho-Ser329) Antibody. The picture on the right is treated with the synthesized peptide.