

Datasheet for ABIN1531556
anti-DDIT3 antibody (pSer30)

3 Images

[Go to Product page](#)

Overview

Quantity:	100 µg
Target:	DDIT3
Binding Specificity:	AA 15-64, pSer30
Reactivity:	Human, Mouse
Host:	Rabbit
Clonality:	Polyclonal
Conjugate:	This DDIT3 antibody is un-conjugated
Application:	Western Blotting (WB), ELISA, Immunohistochemistry (IHC), Immunofluorescence (IF)

Product Details

Immunogen:	The antiserum was produced against synthesized peptide derived from human CHOP around the phosphorylation site of Ser30.
Isotype:	IgG
Specificity:	CHOP (Phospho-Ser30) Antibody detects endogenous levels of CHOP only when phosphorylated at Ser30. PhosphorylationH:S30 M:S30
Purification:	The antibody was purified from rabbit antiserum by affinity-chromatography using phospho peptide. The antibody against non-phospho peptide was removed by chromatography using corresponding non-phospho peptide.
Purity:	> 95 %

Target Details

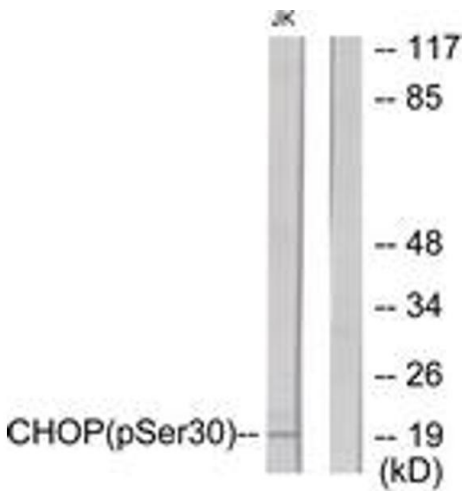
Target:	DDIT3
Alternative Name:	CHOP (DDIT3 Products)
Background:	Synonyms: C/EBP-homologous protein, DDIT3, DNA-damage inducible transcript 3, GADD153, Growth arrest and DNA-damage-inducible protein GADD153 NCBI Gene Symbol: DDIT3
Molecular Weight:	19 kDa
Gene ID:	1649
OMIM:	126337
UniProt:	P35638
Pathways:	Regulation of Muscle Cell Differentiation , ER-Nucleus Signaling , Skeletal Muscle Fiber Development , Cell RedoxHomeostasis

Application Details

Application Notes:	WB: 1:500~1:1000 IHC: 1:50~1:100 IF: 1:100~1:500 ELISA: 1:20000
Comment:	Unigene-Number: Hs.505777, Hs.690217 (NCBI Gene Symbol: DDIT3)
Restrictions:	For Research Use only

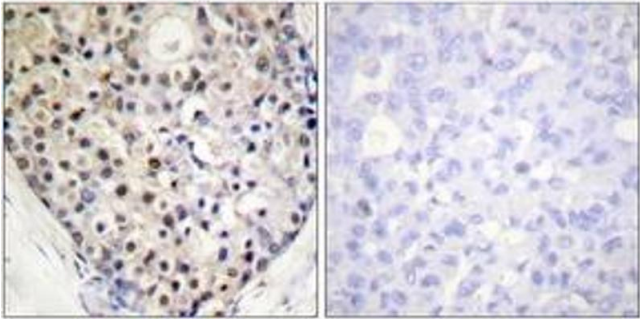
Handling

Format:	Liquid
Concentration:	1 mg/mL
Buffer:	phosphate buffered saline (without Mg2+ and Ca2+), pH 7.4, 150 mM NaCl, 0.02 % sodium azide and 50 % glycerol.
Preservative:	Sodium azide
Precaution of Use:	This product contains sodium azide: a POISONOUS AND HAZARDOUS SUBSTANCE which should be handled by trained staff only.
Storage:	-20 °C
Storage Comment:	Stable at -20°C for at least 1 year.
Expiry Date:	12 months



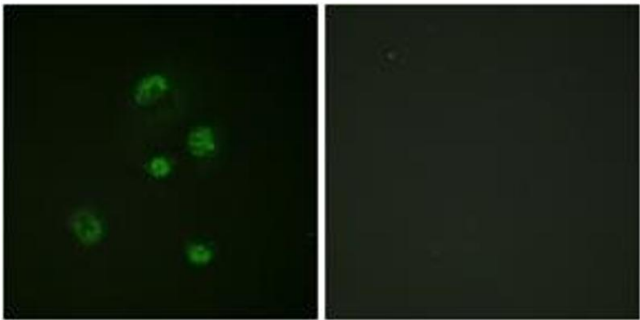
Western Blotting

Image 1. Western blot analysis of extracts from Jurkat cells treated with PMA 125ng/ml 30', using CHOP (Phospho-Ser30) Antibody. The lane on the right is treated with the synthesized peptide.



Immunohistochemistry

Image 2. Immunohistochemistry analysis of paraffin-embedded human breast carcinoma, using CHOP (Phospho-Ser30) Antibody. The picture on the right is treated with the synthesized peptide.



Immunofluorescence

Image 3. Immunofluorescence analysis of A549 cells, using CHOP (Phospho-Ser30) Antibody. The picture on the right is treated with the synthesized peptide.