

Datasheet for ABIN1531565  
**anti-Cyclin E2 antibody (pThr392)**

## 2 Images

[Go to Product page](#)

## Overview

Quantity:	100 µg
Target:	Cyclin E2 (CCNE2)
Binding Specificity:	AA 355-404, pThr392
Reactivity:	Human, Mouse
Host:	Rabbit
Clonality:	Polyclonal
Conjugate:	This Cyclin E2 antibody is un-conjugated
Application:	ELISA, Immunofluorescence (IF)

## Product Details

Immunogen:	The antiserum was produced against synthesized peptide derived from human Cyclin E2 around the phosphorylation site of Thr392.
Isotype:	IgG
Specificity:	Cyclin E2 (Phospho-Thr392) Antibody detects endogenous levels of Cyclin E2 only when phosphorylated at Thr392. PhosphorylationH:T392 M:T392
Purification:	The antibody was purified from rabbit antiserum by affinity-chromatography using phospho peptide. The antibody against non-phospho peptide was removed by chromatography using corresponding non-phospho peptide.
Purity:	> 95 %

## Target Details

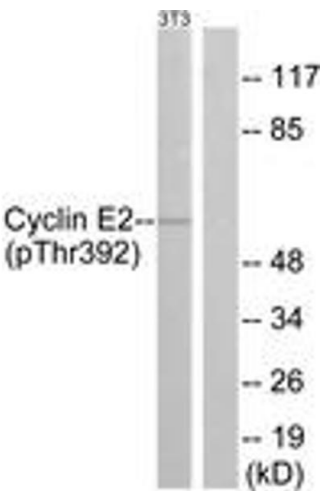
Target:	Cyclin E2 (CCNE2)
Alternative Name:	Cyclin E2 ( <a href="#">CCNE2 Products</a> )
Background:	Synonyms: CCNE2, CGE2, CYCE2, G1/S-Specific cyclin E2 NCBI Gene Symbol: CCNE2
Molecular Weight:	46 kDa
Gene ID:	9134
OMIM:	603775
UniProt:	<a href="#">O96020</a>
Pathways:	<a href="#">Cell Division Cycle, Mitotic G1-G1/S Phases</a>

## Application Details

Application Notes:	IF: 1:100~1:500 ELISA: 1:10000
Comment:	Unigene-Number: Hs.567387 (NCBI Gene Symbol: CCNE2)
Restrictions:	For Research Use only

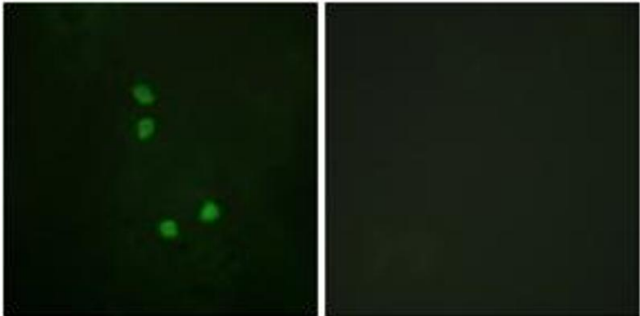
## Handling

Format:	Liquid
Concentration:	1 mg/mL
Buffer:	phosphate buffered saline (without Mg <sup>2+</sup> and Ca <sup>2+</sup> ), pH 7.4, 150 mM NaCl, 0.02 % sodium azide and 50 % glycerol.
Preservative:	Sodium azide
Precaution of Use:	This product contains sodium azide: a POISONOUS AND HAZARDOUS SUBSTANCE which should be handled by trained staff only.
Storage:	-20 °C
Storage Comment:	Stable at -20°C for at least 1 year.
Expiry Date:	12 months



Western Blotting

Image 1.



Immunofluorescence

Image 2. Immunofluorescence analysis of NIH-3T3 cells, using Cyclin E2 (Phospho-Thr392) Antibody. The picture on the right is treated with the synthesized peptide.