

Datasheet for ABIN1531569
anti-TP53BP1 antibody (pSer25)



[Go to Product page](#)

2 Images

Overview

Quantity:	100 µL
Target:	TP53BP1
Binding Specificity:	AA 10-59, pSer25
Reactivity:	Human, Mouse, Rat
Host:	Rabbit
Clonality:	Polyclonal
Conjugate:	This TP53BP1 antibody is un-conjugated
Application:	Immunohistochemistry (IHC), ELISA, Immunofluorescence (IF)

Product Details

Immunogen:	The antiserum was produced against synthesized peptide derived from human 53BP1 around the phosphorylation site of Ser25.
Isotype:	IgG
Specificity:	53BP1 (Phospho-Ser25) Antibody detects endogenous levels of 53BP1 only when phosphorylated at Ser25. PhosphorylationH:S25 M:S25 R:S30
Purification:	The antibody was purified from rabbit antiserum by affinity-chromatography using phospho peptide. The antibody against non-phospho peptide was removed by chromatography using corresponding non-phospho peptide.
Purity:	> 95 %

Target Details

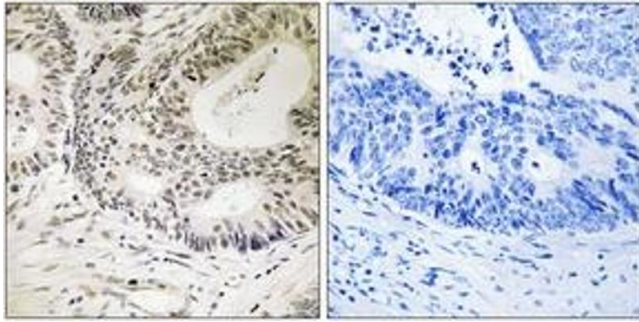
Target:	TP53BP1
Alternative Name:	53BP1 (TP53BP1 Products)
Background:	Synonyms: p53-binding protein 1, P531, TP53B, TP53BP1, TRP53BP1, Tumor suppressor p53-binding protein 1 NCBI Gene Symbol: TP53BP1
Molecular Weight:	213 kDa
Gene ID:	7158
OMIM:	605230
UniProt:	Q12888
Pathways:	DNA Damage Repair

Application Details

Application Notes:	IHC: 1:50~1:100 IF: 1:100~1:500 ELISA: 1:1000
Comment:	Unigene-Number: Hs.440968 (NCBI Gene Symbol: TP53BP1)
Restrictions:	For Research Use only

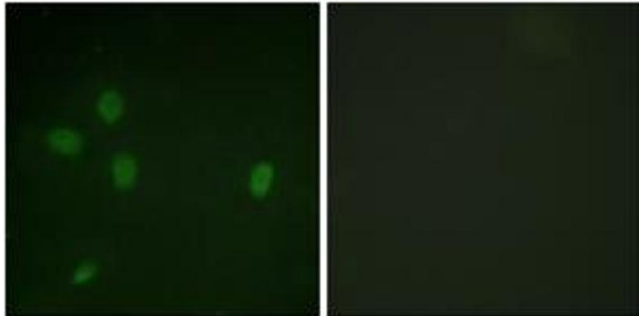
Handling

Format:	Liquid
Concentration:	1 mg/mL
Buffer:	phosphate buffered saline (without Mg ²⁺ and Ca ²⁺), pH 7.4, 150 mM NaCl, 0.02 % sodium azide and 50 % glycerol.
Preservative:	Sodium azide
Precaution of Use:	This product contains sodium azide: a POISONOUS AND HAZARDOUS SUBSTANCE which should be handled by trained staff only.
Storage:	-20 °C
Storage Comment:	Stable at -20°C for at least 1 year.
Expiry Date:	12 months



Immunohistochemistry

Image 1. Immunohistochemistry analysis of paraffin-embedded human colon carcinoma, using 53BP1 (Phospho-Ser25) Antibody. The picture on the right is treated with the synthesized peptide.



Immunofluorescence

Image 2. Immunofluorescence analysis of NIH-3T3 cells, using 53BP1 (Phospho-Ser25) Antibody. The picture on the right is treated with the synthesized peptide.