

Datasheet for ABIN1531570  
**anti-CTNND1 antibody (pTyr228)**

## 3 Images

[Go to Product page](#)

## Overview

Quantity:	100 µg
Target:	CTNND1
Binding Specificity:	AA 201-250, pTyr228
Reactivity:	Human, Mouse, Rat
Host:	Rabbit
Clonality:	Polyclonal
Conjugate:	This CTNND1 antibody is un-conjugated
Application:	Western Blotting (WB), ELISA, Immunohistochemistry (IHC), Immunofluorescence (IF)

## Product Details

Immunogen:	The antiserum was produced against synthesized peptide derived from human Catenin-delta1 around the phosphorylation site of Tyr228.
Isotype:	IgG
Specificity:	Catenin-delta1 (Phospho-Tyr228) Antibody detects endogenous levels of Catenin-delta1 only when phosphorylated at Tyr228. PhosphorylationH:Y228 M:Y228 R:Y228
Purification:	The antibody was purified from rabbit antiserum by affinity-chromatography using phospho peptide. The antibody against non-phospho peptide was removed by chromatography using corresponding non-phospho peptide.
Purity:	> 95 %

## Target Details

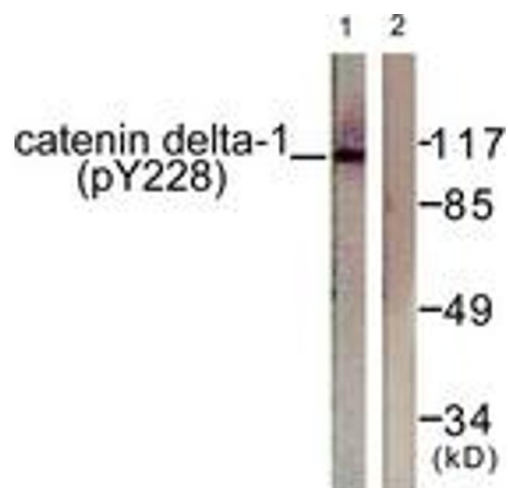
Target:	CTNND1
Alternative Name:	Catenin-Delta1 ( <a href="#">CTNND1 Products</a> )
Background:	Synonyms: Catenin delta-1, Cadherin-associated Src substrate, CAS, p120 catenin, p120(ctn), p120(cas) , CTNND1 , KIAA0384 NCBI Gene Symbol: CTNND1
Molecular Weight:	108 kDa
Gene ID:	1500
OMIM:	601045
UniProt:	<a href="#">O60716</a>
Pathways:	<a href="#">EGFR Signaling Pathway</a> , <a href="#">Neurotrophin Signaling Pathway</a> , <a href="#">Cell-Cell Junction Organization</a> , <a href="#">CXCR4-mediated Signaling Events</a> , <a href="#">Platelet-derived growth Factor Receptor Signaling</a>

## Application Details

Application Notes:	WB: 1:500~1:1000 IHC: 1:50~1:100 IF: 1:100~1:500 ELISA: 1:10000
Comment:	Unigene-Number: Hs.166011 (NCBI Gene Symbol: CTNND1)
Restrictions:	For Research Use only

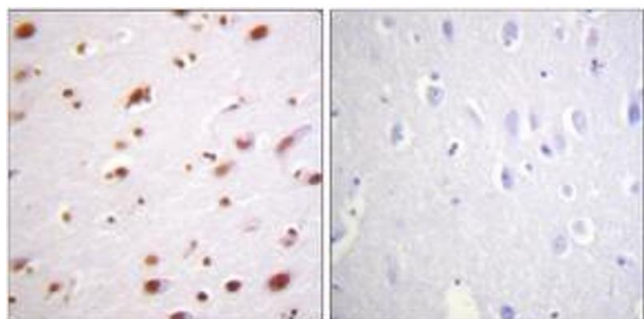
## Handling

Format:	Liquid
Concentration:	1 mg/mL
Buffer:	phosphate buffered saline (without Mg <sup>2+</sup> and Ca <sup>2+</sup> ), pH 7.4, 150 mM NaCl, 0.02 % sodium azide and 50 % glycerol.
Preservative:	Sodium azide
Precaution of Use:	This product contains sodium azide: a POISONOUS AND HAZARDOUS SUBSTANCE which should be handled by trained staff only.
Storage:	-20 °C
Storage Comment:	Stable at -20°C for at least 1 year.
Expiry Date:	12 months



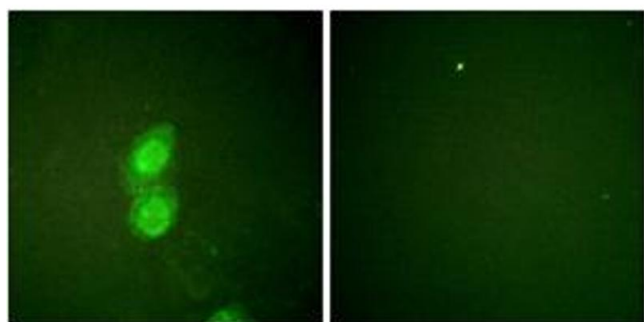
#### Western Blotting

**Image 1.** Western blot analysis of extracts from HuvEc cells, using Catenin-delta1 (Phospho-Tyr228) Antibody. The lane on the right is treated with the synthesized peptide.



#### Immunohistochemistry

**Image 2.** Immunohistochemistry analysis of paraffin-embedded human brain, using Catenin-delta1 (Phospho-Tyr228) Antibody. The picture on the right is treated with the synthesized peptide.



#### Immunofluorescence

**Image 3.** Immunofluorescence analysis of HuvEc cells, using Catenin-delta1 (Phospho-Tyr228) Antibody. The picture on the right is treated with the synthesized peptide.