

Datasheet for ABIN1531578
anti-DDX3 antibody (pThr322)



[Go to Product page](#)

3 Images

Overview

Quantity:	100 µg
Target:	DDX3
Binding Specificity:	AA 466-515, pThr322
Reactivity:	Human, Mouse, Rat
Host:	Rabbit
Clonality:	Polyclonal
Conjugate:	This DDX3 antibody is un-conjugated
Application:	Immunohistochemistry (IHC), ELISA, Immunofluorescence (IF)

Product Details

Immunogen:	The antiserum was produced against synthesized peptide derived from human DDX3/DEAD-box Protein 3 around the phosphorylation site of Thr322.
Isotype:	IgG
Specificity:	DDX3/DEAD-box Protein 3 (Phospho-Thr322) Antibody detects endogenous levels of DDX3/DEAD-box Protein 3 only when phosphorylated at Thr322. PhosphorylationH:T322 M:T322 R:T323
Purification:	The antibody was purified from rabbit antiserum by affinity-chromatography using phospho peptide. The antibody against non-phospho peptide was removed by chromatography using corresponding non-phospho peptide.
Purity:	> 95 %

Target Details

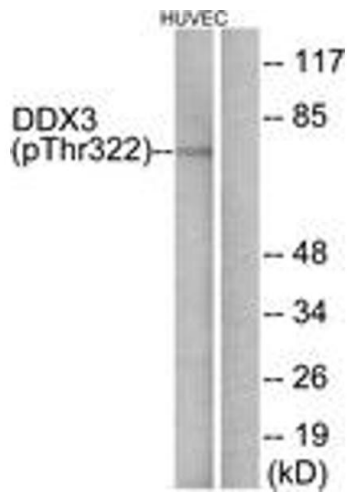
Target:	DDX3
Abstract:	DDX3 Products
Background:	Synonyms: D1PAS1 related sequence 2, D1PAS1-RS2, DBX, DDX3X, DEAD-box RNA helicase DEAD3, DEAD-box protein 3, DEAD-box, X isoform, DEAD3, ERH, Embryonic RNA helicase, HLP2, Helicase-like protein 2 NCBI Gene Symbol: DDX3X
Molecular Weight:	73 kDa
Gene ID:	1654
OMIM:	300160
UniProt:	O00571

Application Details

Application Notes:	IHC: 1:50~1:100 IF: 1:100~1:500 ELISA: 1:1000
Comment:	Unigene-Number: Hs.380774 (NCBI Gene Symbol: DDX3X)
Restrictions:	For Research Use only

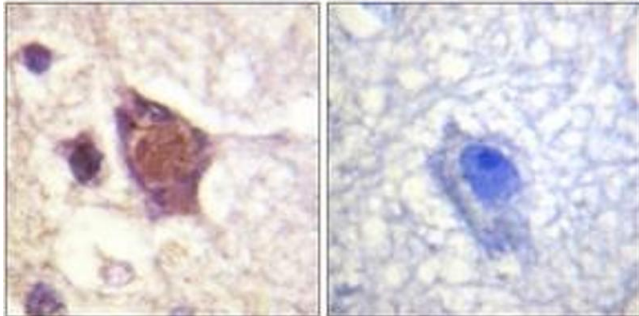
Handling

Format:	Liquid
Concentration:	1 mg/mL
Buffer:	phosphate buffered saline (without Mg ²⁺ and Ca ²⁺), pH 7.4, 150 mM NaCl, 0.02 % sodium azide and 50 % glycerol.
Preservative:	Sodium azide
Precaution of Use:	This product contains sodium azide: a POISONOUS AND HAZARDOUS SUBSTANCE which should be handled by trained staff only.
Storage:	-20 °C
Storage Comment:	Stable at -20°C for at least 1 year.
Expiry Date:	12 months



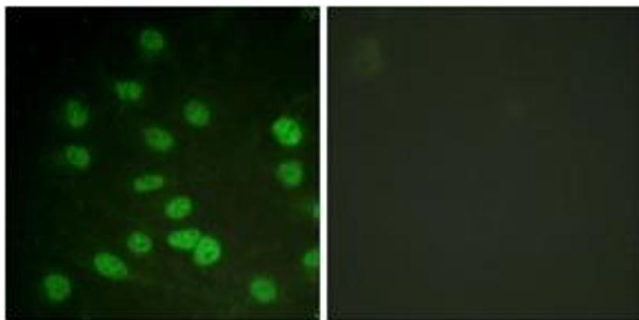
Western Blotting

Image 1.



Immunohistochemistry

Image 2. Immunohistochemistry analysis of paraffin-embedded human brain, using DDX3/DEAD-box Protein 3 (Phospho-Thr322) Antibody. The picture on the right is treated with the synthesized peptide.



Immunofluorescence

Image 3. Immunofluorescence analysis of HuvEc cells treated with serum 20% 30', using DDX3/DEAD-box Protein 3 (Phospho-Thr322) Antibody. The picture on the right is treated with the synthesized peptide.