

Datasheet for ABIN1531580  
**anti-Dematin antibody (pSer403)**

## 2 Images

[Go to Product page](#)

## Overview

Quantity:	100 µg
Target:	Dematin (EPB49)
Binding Specificity:	AA 356-405, pSer403
Reactivity:	Human, Mouse
Host:	Rabbit
Clonality:	Polyclonal
Conjugate:	This Dematin antibody is un-conjugated
Application:	Western Blotting (WB), ELISA, Immunohistochemistry (IHC)

## Product Details

Immunogen:	The antiserum was produced against synthesized peptide derived from human Dematin around the phosphorylation site of Ser403.
Isotype:	IgG
Specificity:	Dematin (Phospho-Ser403) Antibody detects endogenous levels of Dematin only when phosphorylated at Ser403. PhosphorylationH:S403 M:S403
Purification:	The antibody was purified from rabbit antiserum by affinity-chromatography using phospho peptide. The antibody against non-phospho peptide was removed by chromatography using corresponding non-phospho peptide.
Purity:	> 95 %

## Target Details

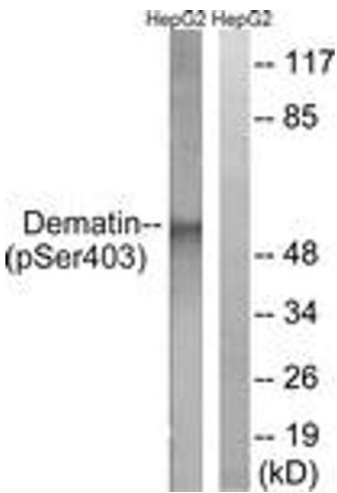
Target:	Dematin (EPB49)
Alternative Name:	Dematin ( <a href="#">EPB49 Products</a> )
Background:	Synonyms: DEMA, DMT, EPB49, Erythrocyte membrane protein band 4.9 NCBI Gene Symbol: EPB49
Molecular Weight:	45 kDa
Gene ID:	2039
OMIM:	125305
UniProt:	<a href="#">Q08495</a>
Pathways:	<a href="#">Regulation of Actin Filament Polymerization</a>

## Application Details

Application Notes:	WB: 1:500~1:1000 IHC: 1:50~1:100 ELISA: 1:1000
Comment:	Unigene-Number: Hs.106124, Hs.186350 (NCBI Gene Symbol: EPB49)
Restrictions:	For Research Use only

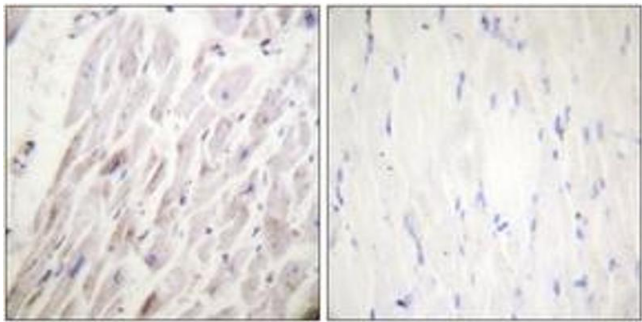
## Handling

Format:	Liquid
Concentration:	1 mg/mL
Buffer:	phosphate buffered saline (without Mg <sup>2+</sup> and Ca <sup>2+</sup> ), pH 7.4, 150 mM NaCl, 0.02 % sodium azide and 50 % glycerol.
Preservative:	Sodium azide
Precaution of Use:	This product contains sodium azide: a POISONOUS AND HAZARDOUS SUBSTANCE which should be handled by trained staff only.
Storage:	-20 °C
Storage Comment:	Stable at -20°C for at least 1 year.
Expiry Date:	12 months



Western Blotting

**Image 1.** Western blot analysis of extracts from HepG2 cells treated with Insulin 0.01U/ml 15', using Dematin (Phospho-Ser403) Antibody. The lane on the right is treated with the synthesized peptide.



Immunohistochemistry

**Image 2.** Immunohistochemistry analysis of paraffin-embedded human heart, using Dematin (Phospho-Ser403) Antibody. The picture on the right is treated with the synthesized peptide.