



Datasheet for ABIN1531586
anti-EPHA2/3 antibody (pTyr588)



[Go to Product page](#)

2 Images

Overview

Quantity:	100 µg
Target:	EPHA2/3
Binding Specificity:	AA 556-605, pTyr588
Reactivity:	Human, Rat
Host:	Rabbit
Clonality:	Polyclonal
Conjugate:	This EPHA2/3 antibody is un-conjugated
Application:	Western Blotting (WB), ELISA, Immunofluorescence (IF)

Product Details

Immunogen:	The antiserum was produced against synthesized peptide derived from human EPHA2/3 around the phosphorylation site of Tyr588/596.
Isotype:	IgG
Specificity:	EPHA2/3 (Phospho-Tyr588/596) Antibody detects endogenous levels of EPHA2/3 only when phosphorylated at Tyr588/596. PhosphorylationH:Y588/Y596M:Y589/Y596 R:-/Y597
Purification:	The antibody was purified from rabbit antiserum by affinity-chromatography using phospho peptide. The antibody against non-phospho peptide was removed by chromatography using corresponding non-phospho peptide.
Purity:	> 95 %

Target Details

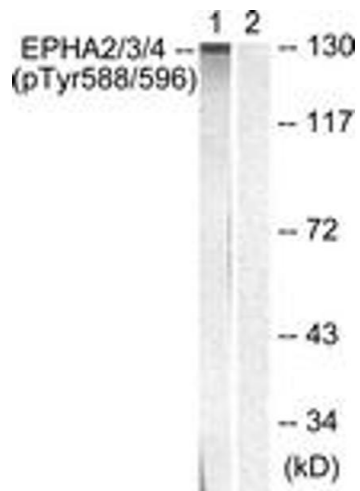
Target:	EPHA2/3
Abstract:	EPHA2/3 Products
Background:	Synonyms: ECK, Ephrin type-A receptor 2 precursor, Epithelial cell kinase, MPK-5, SEK-2, SEK2, Tyrosine-protein kinase receptor ECK, kinase EphA2 NCBI Gene Symbol: EPHA2
Molecular Weight:	108 kDa
Gene ID:	1969, 2042, 2043
OMIM:	176946
UniProt:	P29317 , P29320 , P54764

Application Details

Application Notes:	WB: 1:500~1:1000 IF: 1:100~1:500 ELISA: 1:20000
Comment:	Unigene-Number: Hs.171596, Hs.123642, Hs.371218 (NCBI Gene Symbol: EPHA2)
Restrictions:	For Research Use only

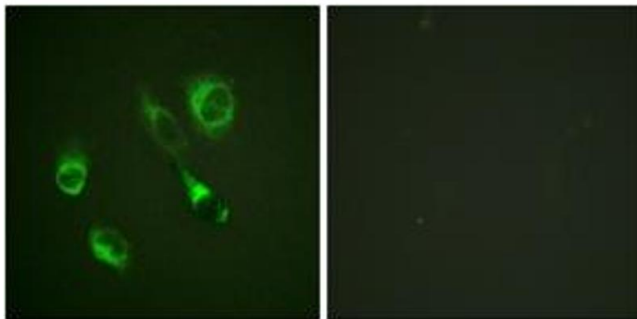
Handling

Format:	Liquid
Concentration:	1 mg/mL
Buffer:	phosphate buffered saline (without Mg ²⁺ and Ca ²⁺), pH 7.4, 150 mM NaCl, 0.02 % sodium azide and 50 % glycerol.
Preservative:	Sodium azide
Precaution of Use:	This product contains sodium azide: a POISONOUS AND HAZARDOUS SUBSTANCE which should be handled by trained staff only.
Storage:	-20 °C
Storage Comment:	Stable at -20°C for at least 1 year.
Expiry Date:	12 months



Western Blotting

Image 1. Western blot analysis of extracts from HepG2 cells, using EPHA2/3 (Phospho-Tyr588/596) Antibody. The lane on the right is treated with the synthesized peptide.



Immunofluorescence

Image 2. Immunofluorescence analysis of HeLa cells, using EPHA2/3 (Phospho-Tyr588/596) Antibody. The picture on the right is treated with the synthesized peptide.