

Datasheet for ABIN1531591
anti-MAPK6 antibody (pSer189)



[Go to Product page](#)

2 Images

Overview

Quantity:	100 µL
Target:	MAPK6
Binding Specificity:	AA 155-204, pSer189
Reactivity:	Human, Mouse, Rat
Host:	Rabbit
Clonality:	Polyclonal
Conjugate:	This MAPK6 antibody is un-conjugated
Application:	Western Blotting (WB), ELISA, Immunohistochemistry (IHC)

Product Details

Immunogen:	The antiserum was produced against synthesized peptide derived from human ERK3 around the phosphorylation site of Ser189.
Isotype:	IgG
Specificity:	ERK3 (Phospho-Ser189) Antibody detects endogenous levels of ERK3 only when phosphorylated at Ser189. PhosphorylationH:S189 M:S189 R:S189
Purification:	The antibody was purified from rabbit antiserum by affinity-chromatography using phospho peptide. The antibody against non-phospho peptide was removed by chromatography using corresponding non-phospho peptide.
Purity:	> 95 %

Target Details

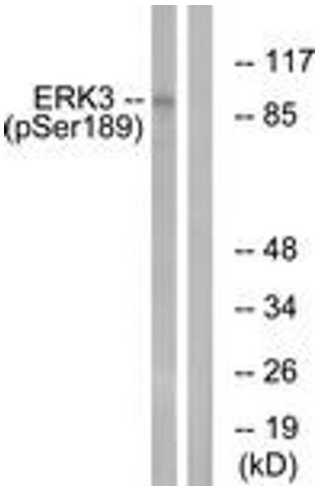
Target:	MAPK6
Alternative Name:	ERK3 (MAPK6 Products)
Background:	Synonyms: ERK-3, ERK3, Extracellular signal- regulated kinase 3, MAP kinase isoform p97, MAPK6, MK06, Mitogen-activated protein kinase 6, PRKM4, PRKM6, kinase ERK3, p55-MAPK, p97-MAPK NCBI Gene Symbol: MAPK6
Molecular Weight:	82 kDa
Gene ID:	5597
OMIM:	602904
UniProt:	Q16659
Pathways:	MAPK Signaling , Neurotrophin Signaling Pathway , Regulation of Muscle Cell Differentiation , Hepatitis C

Application Details

Application Notes:	WB: 1:500~1:1000 IHC: 1:50~1:100 ELISA: 1:5000
Comment:	Unigene-Number: Hs.411847 (NCBI Gene Symbol: MAPK6)
Restrictions:	For Research Use only

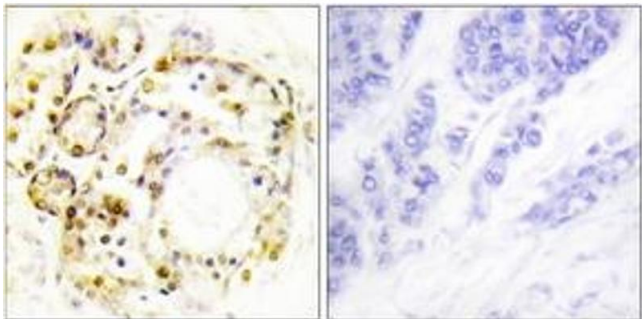
Handling

Format:	Liquid
Concentration:	1 mg/mL
Buffer:	phosphate buffered saline (without Mg2+ and Ca2+), pH 7.4, 150 mM NaCl, 0.02 % sodium azide and 50 % glycerol.
Preservative:	Sodium azide
Precaution of Use:	This product contains sodium azide: a POISONOUS AND HAZARDOUS SUBSTANCE which should be handled by trained staff only.
Storage:	-20 °C
Storage Comment:	Stable at -20°C for at least 1 year.
Expiry Date:	12 months



Western Blotting

Image 1. Western blot analysis of extracts from mouse brain, using ERK3 (Phospho-Ser189) Antibody. The lane on the right is treated with the synthesized peptide.



Immunohistochemistry

Image 2. Immunohistochemistry analysis of paraffin-embedded human breast carcinoma, using ERK3 (Phospho-Ser189) Antibody. The picture on the right is treated with the synthesized peptide.