

Datasheet for ABIN1531602
anti-GATA4 antibody (pSer262)



[Go to Product page](#)

2 Images

Overview

Quantity:	100 µL
Target:	GATA4
Binding Specificity:	AA 228-277, pSer262
Reactivity:	Human, Rat, Mouse
Host:	Rabbit
Clonality:	Polyclonal
Conjugate:	This GATA4 antibody is un-conjugated
Application:	Western Blotting (WB), ELISA, Immunofluorescence (IF)

Product Details

Immunogen:	The antiserum was produced against synthesized peptide derived from human GATA4 around the phosphorylation site of Ser262.
Isotype:	IgG
Specificity:	GATA4 (Phospho-Ser262) Antibody detects endogenous levels of GATA4 only when phosphorylated at Ser262. PhosphorylationH:S262 M:S261 R:S261
Purification:	The antibody was purified from rabbit antiserum by affinity-chromatography using phospho peptide. The antibody against non-phospho peptide was removed by chromatography using corresponding non-phospho peptide.
Purity:	> 95 %

Target Details

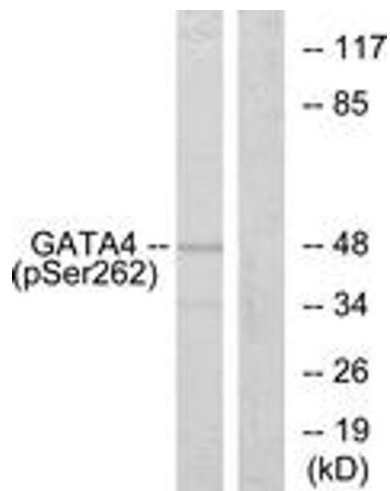
Target:	GATA4
Alternative Name:	GATA4 (GATA4 Products)
Background:	Synonyms: DNA binding protein GATA-GT2, GAT4, GATA binding factor-4, GATA-4, Transcription factor GATA-4 NCBI Gene Symbol: GATA4
Molecular Weight:	44 kDa
Gene ID:	2626
OMIM:	600576
UniProt:	P43694
Pathways:	Peptide Hormone Metabolism , Carbohydrate Homeostasis

Application Details

Application Notes:	WB: 1:500~1:1000 IF: 1:100~1:500 ELISA: 1:5000
Comment:	Unigene-Number: Hs.243987 (NCBI Gene Symbol: GATA4)
Restrictions:	For Research Use only

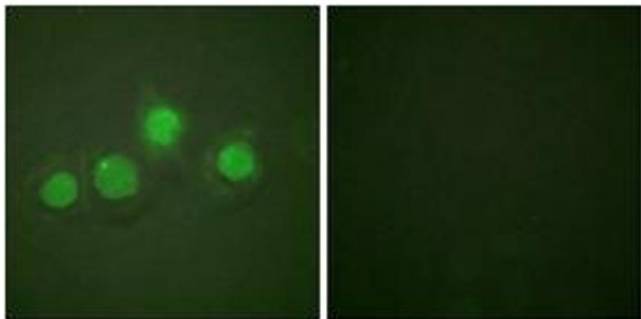
Handling

Format:	Liquid
Concentration:	1 mg/mL
Buffer:	phosphate buffered saline (without Mg ²⁺ and Ca ²⁺), pH 7.4, 150 mM NaCl, 0.02 % sodium azide and 50 % glycerol.
Preservative:	Sodium azide
Precaution of Use:	This product contains sodium azide: a POISONOUS AND HAZARDOUS SUBSTANCE which should be handled by trained staff only.
Storage:	-20 °C
Storage Comment:	Stable at -20°C for at least 1 year.
Expiry Date:	12 months



Western Blotting

Image 1. Western blot analysis of extracts from 293 cells, using GATA4 (Phospho-Ser262) Antibody. The lane on the right is treated with the synthesized peptide.



Immunofluorescence

Image 2. Immunofluorescence analysis of HuvEc cells, using GATA4 (Phospho-Ser262) Antibody. The picture on the right is treated with the synthesized peptide.