

Datasheet for ABIN1531604
anti-GRIA4 antibody (pSer862)

2 Images

[Go to Product page](#)

Overview

Quantity:	100 µg
Target:	GRIA4
Binding Specificity:	AA 828-877, pSer862
Reactivity:	Human, Mouse, Rat
Host:	Rabbit
Clonality:	Polyclonal
Conjugate:	This GRIA4 antibody is un-conjugated
Application:	Western Blotting (WB), ELISA, Immunohistochemistry (IHC)

Product Details

Immunogen:	The antiserum was produced against synthesized peptide derived from human GluR4 around the phosphorylation site of Ser862.
Isotype:	IgG
Specificity:	GluR4 (Phospho-Ser862) Antibody detects endogenous levels of GluR4 only when phosphorylated at Ser862. PhosphorylationH:S862 M:S862 R:S862
Purification:	The antibody was purified from rabbit antiserum by affinity-chromatography using phospho peptide. The antibody against non-phospho peptide was removed by chromatography using corresponding non-phospho peptide.
Purity:	> 95 %

Target Details

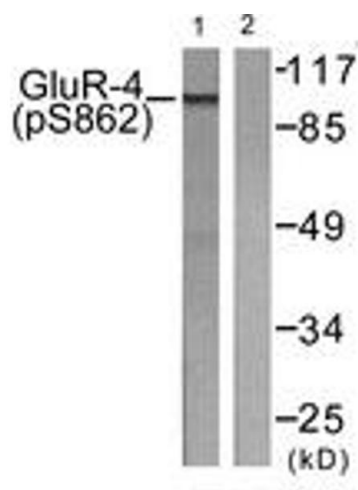
Target:	GRIA4
Alternative Name:	GluR4 (GRIA4 Products)
Background:	Synonyms: GLR4, GLUR4, GRIA4, GluR-4, GluR-D, GluR4, Glutamate receptor 4 precursor, Glutamate receptor ionotropic, AMPA 4 NCBI Gene Symbol: GRIA4
Molecular Weight:	100 kDa
Gene ID:	2893
OMIM:	138246
UniProt:	P48058
Pathways:	PI3K-Akt Signaling

Application Details

Application Notes:	WB: 1:500~1:1000 IHC: 1:50~1:100 ELISA: 1:5000
Comment:	Unigene-Number: Hs.503743 (NCBI Gene Symbol: GRIA4)
Restrictions:	For Research Use only

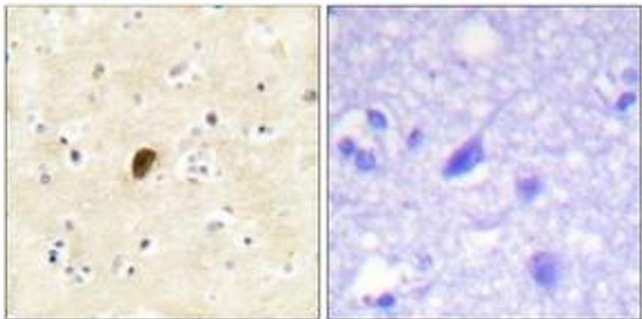
Handling

Format:	Liquid
Concentration:	1 mg/mL
Buffer:	phosphate buffered saline (without Mg ²⁺ and Ca ²⁺), pH 7.4, 150 mM NaCl, 0.02 % sodium azide and 50 % glycerol.
Preservative:	Sodium azide
Precaution of Use:	This product contains sodium azide: a POISONOUS AND HAZARDOUS SUBSTANCE which should be handled by trained staff only.
Storage:	-20 °C
Storage Comment:	Stable at -20°C for at least 1 year.
Expiry Date:	12 months



Western Blotting

Image 1. Western blot analysis of extracts from HepG2 cells treated with Forskolin 40nM 30', using GluR4 (Phospho-Ser862) Antibody. The lane on the right is treated with the synthesized peptide.



Immunohistochemistry

Image 2. Immunohistochemistry analysis of paraffin-embedded human brain, using GluR4 (Phospho-Ser862) Antibody. The picture on the right is treated with the synthesized peptide.