

Datasheet for ABIN1531605
anti-GRK1 antibody (pSer21)

2 Images

[Go to Product page](#)

Overview

Quantity:	100 µg
Target:	GRK1
Binding Specificity:	AA 6-55, pSer21
Reactivity:	Human, Mouse, Rat
Host:	Rabbit
Clonality:	Polyclonal
Conjugate:	This GRK1 antibody is un-conjugated
Application:	Western Blotting (WB), Immunohistochemistry (IHC), ELISA

Product Details

Immunogen:	The antiserum was produced against synthesized peptide derived from human GRK1 around the phosphorylation site of Ser21.
Isotype:	IgG
Specificity:	GRK1 (Phospho-Ser21) Antibody detects endogenous levels of GRK1 only when phosphorylated at Ser21. PhosphorylationH:S21 M:S21 R:S21
Purification:	The antibody was purified from rabbit antiserum by affinity-chromatography using phospho peptide. The antibody against non-phospho peptide was removed by chromatography using corresponding non-phospho peptide.
Purity:	> 95 %

Target Details

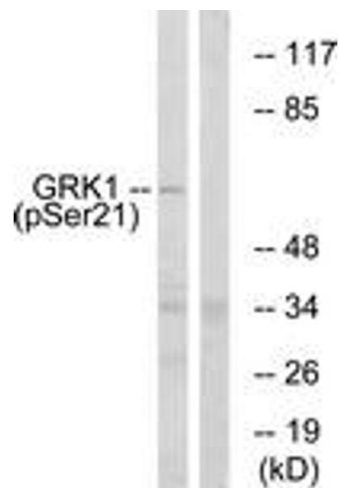
Target:	GRK1
Alternative Name:	GRK1 (GRK1 Products)
Background:	Synonyms: RHOK, RK, Rhodopsin kinase, kinase GRK1 NCBI Gene Symbol: GRK1
Molecular Weight:	63 kDa
Gene ID:	6011
OMIM:	180381
UniProt:	Q15835
Pathways:	Regulation of G-Protein Coupled Receptor Protein Signaling, Phototransduction

Application Details

Application Notes:	WB: 1:500~1:1000 IHC: 1:50~1:100 ELISA: 1:5000
Comment:	Unigene-Number: Hs.103501 (NCBI Gene Symbol: GRK1)
Restrictions:	For Research Use only

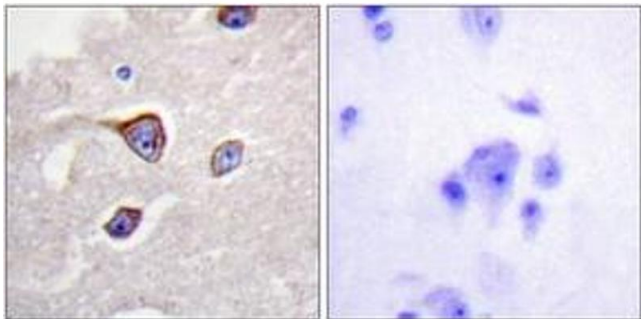
Handling

Format:	Liquid
Concentration:	1 mg/mL
Buffer:	phosphate buffered saline (without Mg ²⁺ and Ca ²⁺), pH 7.4, 150 mM NaCl, 0.02 % sodium azide and 50 % glycerol.
Preservative:	Sodium azide
Precaution of Use:	This product contains sodium azide: a POISONOUS AND HAZARDOUS SUBSTANCE which should be handled by trained staff only.
Storage:	-20 °C
Storage Comment:	Stable at -20°C for at least 1 year.
Expiry Date:	12 months



Western Blotting

Image 1. Western blot analysis of extracts from COS7 cells treated with TNF 20ng/ml 5', using GRK1 (Phospho-Ser21) Antibody. The lane on the right is treated with the synthesized peptide.



Immunohistochemistry

Image 2. Immunohistochemistry analysis of paraffin-embedded human brain, using GRK1 (Phospho-Ser21) Antibody. The picture on the right is treated with the synthesized peptide.