

Datasheet for ABIN1531611
anti-ERBB4 antibody (pTyr1284)

3 Images



[Go to Product page](#)

Overview

Quantity:	100 µL
Target:	ERBB4
Binding Specificity:	AA 1250-1299, pTyr1284
Reactivity:	Human, Mouse, Rat
Host:	Rabbit
Clonality:	Polyclonal
Conjugate:	This ERBB4 antibody is un-conjugated
Application:	Western Blotting (WB), ELISA, Immunohistochemistry (IHC), Immunofluorescence (IF)

Product Details

Immunogen:	The antiserum was produced against synthesized peptide derived from human HER4 around the phosphorylation site of Tyr1284.
Isotype:	IgG
Specificity:	HER4 (Phospho-Tyr1284) Antibody detects endogenous levels of HER4 only when phosphorylated at Tyr1284. PhosphorylationH:Y1284 M:Y1268 R:Y1284
Purification:	The antibody was purified from rabbit antiserum by affinity-chromatography using phospho peptide. The antibody against non-phospho peptide was removed by chromatography using corresponding non-phospho peptide.
Purity:	> 95 %

Target Details

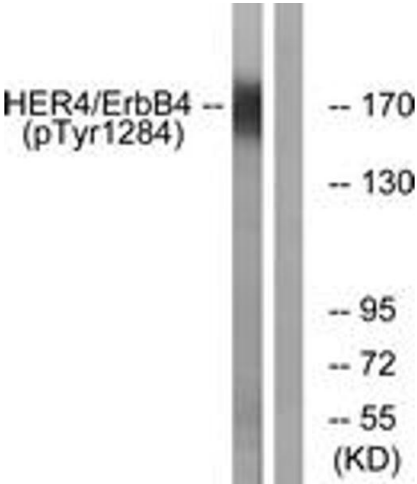
Target:	ERBB4
Alternative Name:	HER4 (ERBB4 Products)
Background:	Synonyms: ERBB4, HER4, kinase ErbB4, p180erbB4 NCBI Gene Symbol: ERBB4
Molecular Weight:	146 kDa
Gene ID:	2066
OMIM:	600543
UniProt:	Q15303
Pathways:	RTK Signaling , Fc-epsilon Receptor Signaling Pathway , EGFR Signaling Pathway , Neurotrophin Signaling Pathway

Application Details

Application Notes:	WB: 1:500~1:1000 IHC: 1:50~1:100 IF: 1:100~1:500 ELISA: 1:10000
Comment:	Unigene-Number: Hs.390729 (NCBI Gene Symbol: ERBB4)
Restrictions:	For Research Use only

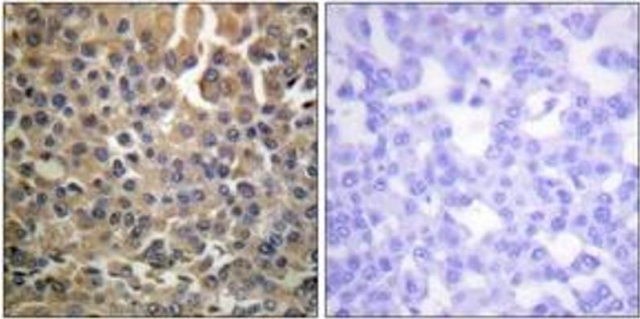
Handling

Format:	Liquid
Concentration:	1 mg/mL
Buffer:	phosphate buffered saline (without Mg ²⁺ and Ca ²⁺), pH 7.4, 150 mM NaCl, 0.02 % sodium azide and 50 % glycerol.
Preservative:	Sodium azide
Precaution of Use:	This product contains sodium azide: a POISONOUS AND HAZARDOUS SUBSTANCE which should be handled by trained staff only.
Storage:	-20 °C
Storage Comment:	Stable at -20°C for at least 1 year.
Expiry Date:	12 months



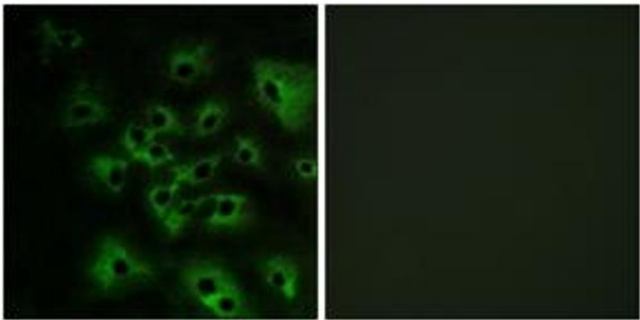
Western Blotting

Image 1. Western blot analysis of extracts from HuvEc cells treated with EGF 200ng/ml 30', using HER4 (Phospho-Tyr1284) Antibody. The lane on the right is treated with the synthesized peptide.



Immunohistochemistry

Image 2. Immunohistochemistry analysis of paraffin-embedded human breast carcinoma, using HER4 (Phospho-Tyr1284) Antibody. The picture on the right is treated with the synthesized peptide.



Immunofluorescence

Image 3. Immunofluorescence analysis of HeLa cells treated with EGF 200nM 5', using HER4 (Phospho-Tyr1284) Antibody. The picture on the right is treated with the synthesized peptide.