



[Go to Product page](#)

Datasheet for ABIN1531612
anti-Histone H1 antibody (pSer17)

3 Images

Overview

Quantity:	100 µg
Target:	Histone H1
Binding Specificity:	AA 1-50, pSer17
Reactivity:	Human, Mouse
Host:	Rabbit
Clonality:	Polyclonal
Conjugate:	This Histone H1 antibody is un-conjugated
Application:	Immunofluorescence (IF), Immunohistochemistry (IHC), Western Blotting (WB), ELISA

Product Details

Immunogen:	The antiserum was produced against synthesized peptide derived from human Histone H1 around the phosphorylation site of Thr17.
Isotype:	IgG
Specificity:	Histone H1 (Phospho-Thr17) Antibody detects endogenous levels of Histone H1 only when phosphorylated at Thr17. PhosphorylationH:S17 M:S17
Purification:	The antibody was purified from rabbit antiserum by affinity-chromatography using phospho peptide. The antibody against non-phospho peptide was removed by chromatography using corresponding non-phospho peptide.
Purity:	> 95 %

Target Details

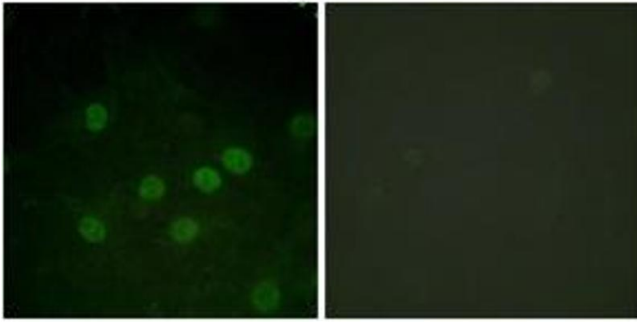
Target:	Histone H1
Abstract:	Histone H1 Products
Background:	Synonyms: Histone H1.5, Histone H1a, HIST1H1B, H1F5, Histone H1.3, Histone H1c , HIST1H1D , H1F3, Histone H1.4, Histone H1b , HIST1H1E, H1F4 NCBI Gene Symbol: HIST1H1B
Molecular Weight:	22 kDa
Gene ID:	3009, 3007, 3008
OMIM:	142711
UniProt:	P16401 , P16402 , P10412

Application Details

Application Notes:	WB: 1:500~1:1000 IHC: 1:50~1:100 IF: 1:100~1:500 ELISA: 1:1000
Comment:	Unigene-Number: Hs.131956, Hs.136857, Hs.248133 (NCBI Gene Symbol: HIST1H1B)
Restrictions:	For Research Use only

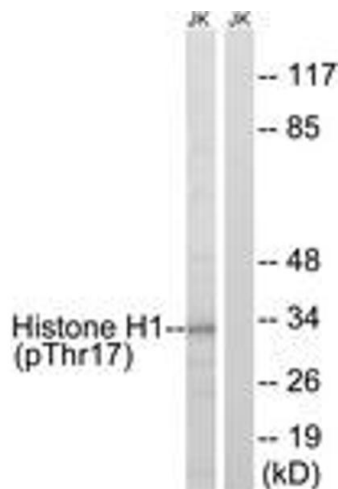
Handling

Format:	Liquid
Concentration:	1 mg/mL
Buffer:	phosphate buffered saline (without Mg ²⁺ and Ca ²⁺), pH 7.4, 150 mM NaCl, 0.02 % sodium azide and 50 % glycerol.
Preservative:	Sodium azide
Precaution of Use:	This product contains sodium azide: a POISONOUS AND HAZARDOUS SUBSTANCE which should be handled by trained staff only.
Storage:	-20 °C
Storage Comment:	Stable at -20°C for at least 1 year.
Expiry Date:	12 months



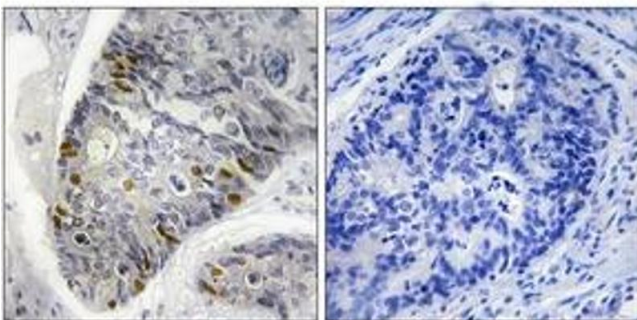
Immunofluorescence

Image 1. Immunofluorescence analysis of HuvEc cells treated with serum 20% 30', using Histone H1 (Phospho-Thr17) Antibody. The picture on the right is treated with the synthesized peptide.



Western Blotting

Image 2. Western blot analysis of extracts from Jurkat cells treated with UV 15', using Histone H1 (Phospho-Thr17) Antibody. The lane on the right is treated with the synthesized peptide.



Immunohistochemistry

Image 3. Immunohistochemistry analysis of paraffin-embedded human colon carcinoma, using Histone H1 (Phospho-Thr17) Antibody. The picture on the right is treated with the synthesized peptide.