

Datasheet for ABIN1531616
anti-MAPK8IP1 antibody (pThr103)

2 Images

[Go to Product page](#)

Overview

Quantity:	100 µg
Target:	MAPK8IP1
Binding Specificity:	AA 69-118, pThr103
Reactivity:	Human, Rat, Mouse
Host:	Rabbit
Clonality:	Polyclonal
Conjugate:	This MAPK8IP1 antibody is un-conjugated
Application:	Western Blotting (WB), ELISA, Immunofluorescence (IF)

Product Details

Immunogen:	The antiserum was produced against synthesized peptide derived from human JIP1 around the phosphorylation site of Thr103.
Isotype:	IgG
Specificity:	JIP1 (Phospho-Thr103) Antibody detects endogenous levels of JIP1 only when phosphorylated at Thr103. PhosphorylationH:T103 M:T103 R:T103
Purification:	The antibody was purified from rabbit antiserum by affinity-chromatography using phospho peptide. The antibody against non-phospho peptide was removed by chromatography using corresponding non-phospho peptide.
Purity:	> 95 %

Target Details

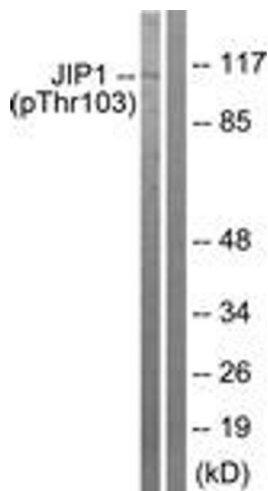
Target:	MAPK8IP1
Alternative Name:	JIP1 (MAPK8IP1 Products)
Background:	Synonyms: C-jun-amino-terminal kinase interacting protein 1, IB-1, IB1, Islet-brain-1, JIP-1, JIP-1 related protein, JNK MAP kinase scaffold protein 1, JNK-interacting protein 1, JRP, MAPK8IP, MAPK8IP1, Mitogen-activated protein kinase 8-interacting protein 1, PRKM NCBI Gene Symbol: MAPK8IP1
Molecular Weight:	77 kDa
Gene ID:	9479
OMIM:	125853
UniProt:	Q9UQF2

Application Details

Application Notes:	WB: 1:500~1:1000 IF: 1:100~1:500 ELISA: 1:1000
Comment:	Unigene-Number: Hs.234249 (NCBI Gene Symbol: MAPK8IP1)
Restrictions:	For Research Use only

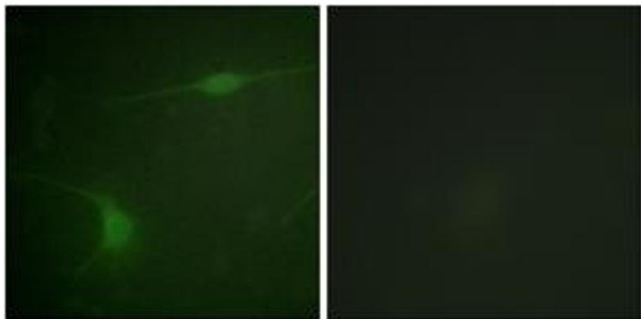
Handling

Format:	Liquid
Concentration:	1 mg/mL
Buffer:	phosphate buffered saline (without Mg ²⁺ and Ca ²⁺), pH 7.4, 150 mM NaCl, 0.02 % sodium azide and 50 % glycerol.
Preservative:	Sodium azide
Precaution of Use:	This product contains sodium azide: a POISONOUS AND HAZARDOUS SUBSTANCE which should be handled by trained staff only.
Storage:	-20 °C
Storage Comment:	Stable at -20°C for at least 1 year.
Expiry Date:	12 months



Western Blotting

Image 1. Western blot analysis of extracts from COLO205 cells treated with Serum 20% 15', using JIP1 (Phospho-Thr103) Antibody. The lane on the right is treated with the synthesized peptide.



Immunofluorescence

Image 2. Immunofluorescence analysis of NIH-3T3 cells, using JIP1 (Phospho-Thr103) Antibody. The picture on the right is treated with the synthesized peptide.