

Datasheet for ABIN1531619  
**anti-CDKN1C antibody (pThr310)**

## 3 Images

[Go to Product page](#)

## Overview

|                      |   |
|----------------------|---|
| Quantity:            | 100 µg  |
| Target:              | CDKN1C  |
| Binding Specificity: | AA 267-316, pThr310   |
| Reactivity:          | Human, Mouse  |
| Host:                | Rabbit  |
| Clonality:           | Polyclonal  |
| Conjugate:           | This CDKN1C antibody is un-conjugated   |
| Application:         | Western Blotting (WB), Immunofluorescence (IF), ELISA, Immunohistochemistry (IHC) |

## Product Details

|               |   |
|---------------|---|
| Immunogen:    | The antiserum was produced against synthesized peptide derived from human p57 Kip2 around the phosphorylation site of Thr310.   |
| Isotype:      | IgG   |
| Specificity:  | p57 Kip2 (Phospho-Thr310) Antibody detects endogenous levels of p57 Kip2 only when phosphorylated at Thr310.<br>PhosphorylationH:T310 M:T342  |
| Purification: | The antibody was purified from rabbit antiserum by affinity-chromatography using phospho peptide. The antibody against non-phospho peptide was removed by chromatography using corresponding non-phospho peptide. |
| Purity:       | > 95 %  |

## Target Details

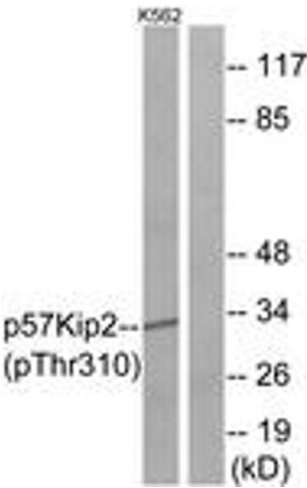
|                   |  |
|-------------------|--|
| Target:           | CDKN1C   |
| Alternative Name: | p57 Kip2 ( <a href="#">CDKN1C Products</a> )   |
| Background:       | Synonyms: CDKN1C, CDN1C, CDNC, Cyclin-dependent kinase inhibitor 1C, Cyclin-dependent kinase inhibitor p57, KIP2<br>NCBI Gene Symbol: CDKN1C |
| Molecular Weight: | 32 kDa   |
| Gene ID:          | 1028   |
| OMIM:             | 130650   |
| UniProt:          | <a href="#">P49918</a>   |
| Pathways:         | <a href="#">Cell Division Cycle</a> , <a href="#">Dopaminergic Neurogenesis</a>  |

## Application Details

|                    |  |
|--------------------|--|
| Application Notes: | WB: 1:500~1:1000 IHC: 1:50~1:100 IF: 1:100~1:500 ELISA: 1:1000 |
| Comment:           | Unigene-Number: Hs.106070 (NCBI Gene Symbol: CDKN1C)           |
| Restrictions:      | For Research Use only  |

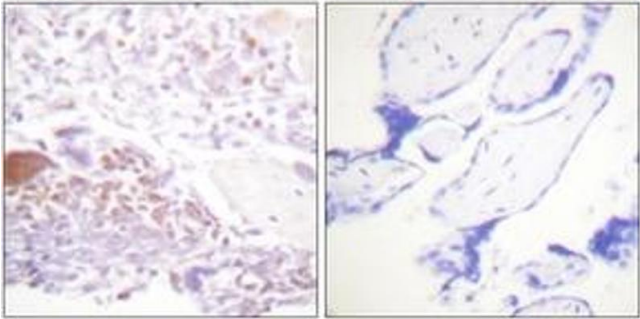
## Handling

|                    |   |
|--------------------|---|
| Format:            | Liquid  |
| Concentration:     | 1 mg/mL   |
| Buffer:            | phosphate buffered saline (without Mg <sup>2+</sup> and Ca <sup>2+</sup> ), pH 7.4, 150 mM NaCl, 0.02 % sodium azide and 50 % glycerol. |
| Preservative:      | Sodium azide  |
| Precaution of Use: | This product contains sodium azide: a POISONOUS AND HAZARDOUS SUBSTANCE which should be handled by trained staff only.                  |
| Storage:           | -20 °C  |
| Storage Comment:   | Stable at -20°C for at least 1 year.  |
| Expiry Date:       | 12 months   |



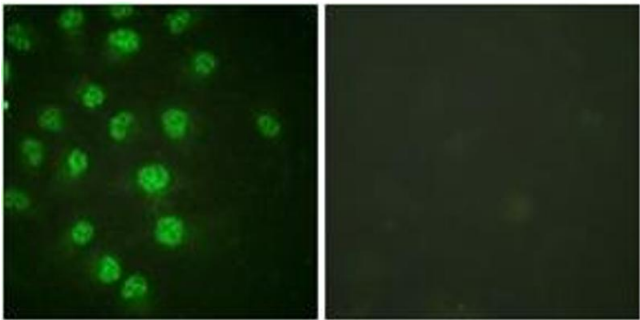
### Western Blotting

**Image 1.** Western blot analysis of extracts from K562 cells treated with insulin 0.01U/ml 15', using p57 Kip2 (Phospho-Thr310) Antibody. The lane on the right is treated with the synthesized peptide.



### Immunohistochemistry

**Image 2.** Immunohistochemistry analysis of paraffin-embedded human placenta, using p57 Kip2 (Phospho-Thr310) Antibody. The picture on the right is treated with the synthesized peptide.



### Immunofluorescence

**Image 3.** Immunofluorescence analysis of HuvEc cells treated with serum 20% 30', using p57 Kip2 (Phospho-Thr310) Antibody. The picture on the right is treated with the synthesized peptide.