



[Go to Product page](#)

Datasheet for ABIN1531635
anti-STAT5 A/B antibody (pSer726)

3 Images

Overview

Quantity:	100 µg
Target:	STAT5 A/B
Binding Specificity:	AA 696-745, pSer726
Reactivity:	Human, Mouse, Rat
Host:	Rabbit
Clonality:	Polyclonal
Conjugate:	This STAT5 A/B antibody is un-conjugated
Application:	Western Blotting (WB), ELISA, Immunohistochemistry (IHC), Immunofluorescence (IF)

Product Details

Immunogen:	The antiserum was produced against synthesized peptide derived from human STAT5A/B around the phosphorylation site of Ser725/730.
Isotype:	IgG
Specificity:	STAT5A/B (Phospho-Ser725/730) Antibody detects endogenous levels of STAT5A/B only when phosphorylated at Ser725/730. PhosphorylationH:S726/731 M:S725/730 R:S725/730
Purification:	The antibody was purified from rabbit antiserum by affinity-chromatography using phospho peptide. The antibody against non-phospho peptide was removed by chromatography using corresponding non-phospho peptide.
Purity:	> 95 %

Target Details

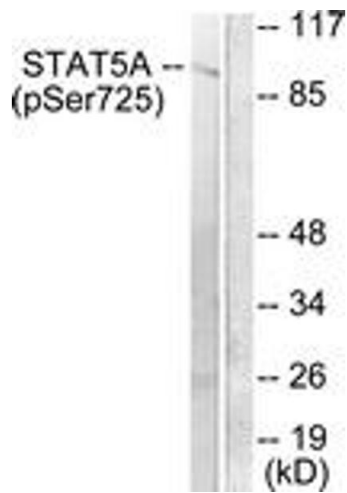
Target:	STAT5 A/B
Alternative Name:	STAT5A/B (STAT5 A/B Products)
Background:	Synonyms: MGF, MPF, Mammary gland factor, STA5A, STAT5, STAT5A, Signal transducer and activator of transcription 5A NCBI Gene Symbol: STAT5A
Molecular Weight:	90 kDa
Gene ID:	6776, 6777
OMIM:	601511
UniProt:	P42229 , P51692

Application Details

Application Notes:	WB: 1:500~1:1000 IHC: 1:50~1:100 IF: 1:100~1:500 ELISA: 1:20000
Comment:	Unigene-Number: Hs.437058, Hs.463059, Hs.714309 (NCBI Gene Symbol: STAT5A)
Restrictions:	For Research Use only

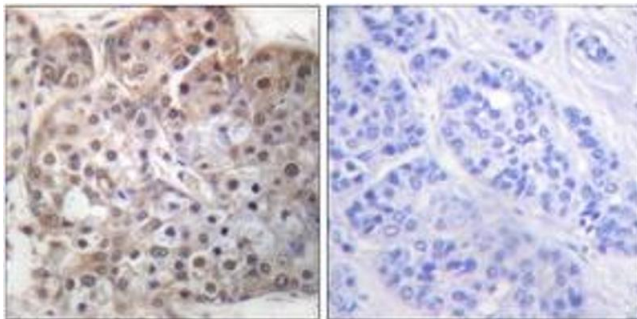
Handling

Format:	Liquid
Concentration:	1 mg/mL
Buffer:	phosphate buffered saline (without Mg ²⁺ and Ca ²⁺), pH 7.4, 150 mM NaCl, 0.02 % sodium azide and 50 % glycerol.
Preservative:	Sodium azide
Precaution of Use:	This product contains sodium azide: a POISONOUS AND HAZARDOUS SUBSTANCE which should be handled by trained staff only.
Storage:	-20 °C
Storage Comment:	Stable at -20°C for at least 1 year.
Expiry Date:	12 months



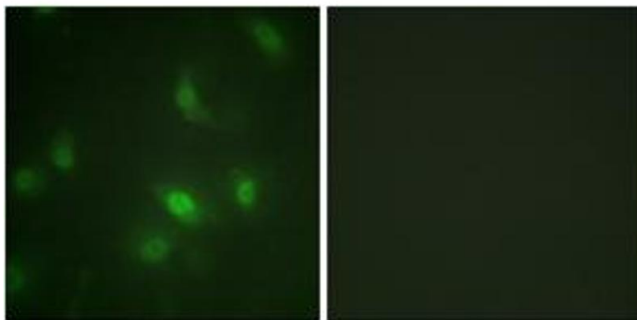
Western Blotting

Image 1. Western blot analysis of extracts from Jurkat cells treated with EGF 200ng/ml 30', using STAT5A/B (Phospho-Ser725/730) Antibody. The lane on the right is treated with the synthesized peptide.



Immunohistochemistry

Image 2. Immunohistochemistry analysis of paraffin-embedded human breast carcinoma, using STAT5A/B (Phospho-Ser725/730) Antibody. The picture on the right is treated with the synthesized peptide.



Immunofluorescence

Image 3. Immunofluorescence analysis of HepG2 cells, using STAT5A/B (Phospho-Ser725/730) Antibody. The picture on the right is treated with the synthesized peptide.