

Datasheet for ABIN1531641
anti-APC1 antibody (pSer688)

2 Images

[Go to Product page](#)

Overview

Quantity:	100 µg
Target:	APC1 (ANAPC1)
Binding Specificity:	AA 654-703, pSer688
Reactivity:	Human, Mouse, Rat
Host:	Rabbit
Clonality:	Polyclonal
Conjugate:	This APC1 antibody is un-conjugated
Application:	ELISA, Immunohistochemistry (IHC), Immunofluorescence (IF)

Product Details

Immunogen:	The antiserum was produced against synthesized peptide derived from human APC1 around the phosphorylation site of Ser688.
Isotype:	IgG
Specificity:	APC1 (Phospho-Ser688) Antibody detects endogenous levels of APC1 only when phosphorylated at Ser688. PhosphorylationH:S688 M:S688 R:S688
Purification:	The antibody was purified from rabbit antiserum by affinity-chromatography using phospho peptide. The antibody against non-phospho peptide was removed by chromatography using corresponding non-phospho peptide.
Purity:	> 95 %

Target Details

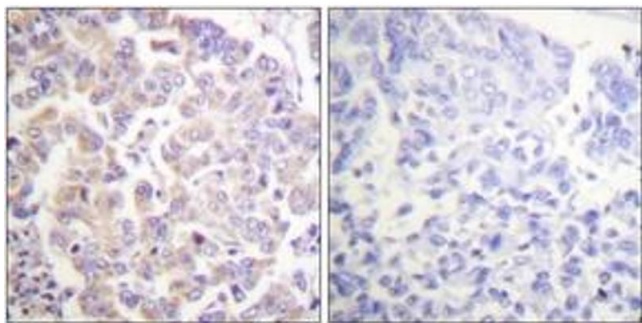
Target:	APC1 (ANAPC1)
Alternative Name:	APC1 (ANAPC1 Products)
Background:	Synonyms: ANAPC1, Anaphase promoting complex subunit 1, ANC1, Cyclosome subunit 1, Mitotic checkpoint regulator, Protein Tsg24, TSG24 NCBI Gene Symbol: ANAPC1
Molecular Weight:	216 kDa
Gene ID:	64682
OMIM:	608473
UniProt:	Q9H1A4

Application Details

Application Notes:	IHC: 1:50~1:100 IF: 1:100~1:500 ELISA: 1:10000
Comment:	Unigene-Number: Hs.436527 (NCBI Gene Symbol: ANAPC1)
Restrictions:	For Research Use only

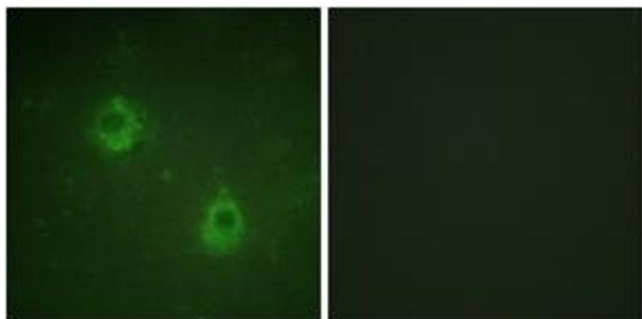
Handling

Format:	Liquid
Concentration:	1 mg/mL
Buffer:	phosphate buffered saline (without Mg ²⁺ and Ca ²⁺), pH 7.4, 150 mM NaCl, 0.02 % sodium azide and 50 % glycerol.
Preservative:	Sodium azide
Precaution of Use:	This product contains sodium azide: a POISONOUS AND HAZARDOUS SUBSTANCE which should be handled by trained staff only.
Storage:	-20 °C
Storage Comment:	Stable at -20°C for at least 1 year.
Expiry Date:	12 months



Immunohistochemistry

Image 1. Immunohistochemistry analysis of paraffin-embedded human breast carcinoma, using APC1 (Phospho-Ser688) Antibody. The picture on the right is treated with the synthesized peptide.



Immunofluorescence

Image 2. Immunofluorescence analysis of COS7 cells, using APC1 (Phospho-Ser688) Antibody. The picture on the right is treated with the synthesized peptide.