

Datasheet for ABIN1531646  
**anti-CDC16 antibody (pSer560)**

## 3 Images

[Go to Product page](#)

## Overview

Quantity:	100 µg
Target:	CDC16
Binding Specificity:	AA 526-575, pSer560
Reactivity:	Human, Mouse
Host:	Rabbit
Clonality:	Polyclonal
Conjugate:	This CDC16 antibody is un-conjugated
Application:	Western Blotting (WB), ELISA, Immunohistochemistry (IHC), Immunofluorescence (IF)

## Product Details

Immunogen:	The antiserum was produced against synthesized peptide derived from human CDC16/APC6 around the phosphorylation site of Ser560.
Isotype:	IgG
Specificity:	CDC16/APC6 (Phospho-Ser560) Antibody detects endogenous levels of CDC16/APC6 only when phosphorylated at Ser560. PhosphorylationH:S560 M:S560
Purification:	The antibody was purified from rabbit antiserum by affinity-chromatography using phospho peptide. The antibody against non-phospho peptide was removed by chromatography using corresponding non-phospho peptide.
Purity:	> 95 %

## Target Details

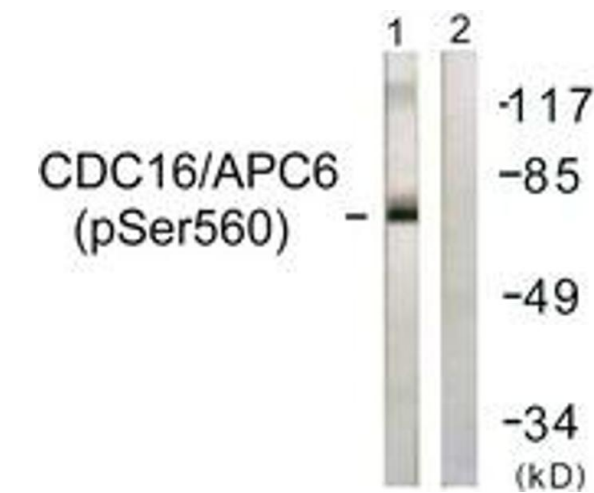
Target:	CDC16
Alternative Name:	CDC16/APC6 ( <a href="#">CDC16 Products</a> )
Background:	Synonyms: APC6, Anaphase promoting complex subunit 6, CDC16Hs, Cell division cycle protein 16 homolog, Cyclosome subunit 6 NCBI Gene Symbol: CDC16
Molecular Weight:	71 kDa
Gene ID:	8881
OMIM:	603461
UniProt:	<a href="#">Q13042</a>
Pathways:	<a href="#">Regulation of Actin Filament Polymerization</a>

## Application Details

Application Notes:	WB: 1:500~1:1000 IHC: 1:50~1:100 IF: 1:100~1:500 ELISA: 1:20000
Comment:	Unigene-Number: Hs.374127 (NCBI Gene Symbol: CDC16)
Restrictions:	For Research Use only

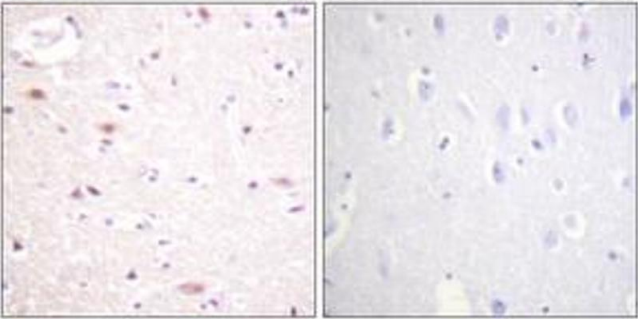
## Handling

Format:	Liquid
Concentration:	1 mg/mL
Buffer:	phosphate buffered saline (without Mg <sup>2+</sup> and Ca <sup>2+</sup> ), pH 7.4, 150 mM NaCl, 0.02 % sodium azide and 50 % glycerol.
Preservative:	Sodium azide
Precaution of Use:	This product contains sodium azide: a POISONOUS AND HAZARDOUS SUBSTANCE which should be handled by trained staff only.
Storage:	-20 °C
Storage Comment:	Stable at -20°C for at least 1 year.
Expiry Date:	12 months



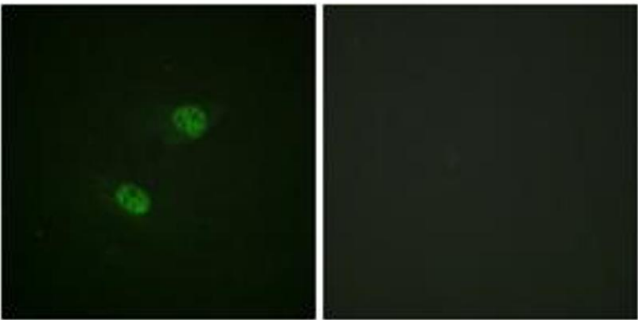
#### Western Blotting

**Image 1.** Western blot analysis of extracts from HuvEc cells, using CDC16/APC6 (Phospho-Ser560) Antibody. The lane on the right is treated with the synthesized peptide.



#### Immunohistochemistry

**Image 2.** Immunohistochemistry analysis of paraffin-embedded human brain, using CDC16/APC6 (Phospho-Ser560) Antibody. The picture on the right is treated with the synthesized peptide.



#### Immunofluorescence

**Image 3.** Immunofluorescence analysis of HeLa cells, using CDC16/APC6 (Phospho-Ser560) Antibody. The picture on the right is treated with the synthesized peptide.