



[Go to Product page](#)

Datasheet for ABIN1531648
anti-KCNJ3 antibody (pSer185)

3 Images

Overview

Quantity:	100 µL
Target:	KCNJ3
Binding Specificity:	AA 151-200, pSer185
Reactivity:	Human, Mouse, Rat
Host:	Rabbit
Clonality:	Polyclonal
Conjugate:	This KCNJ3 antibody is un-conjugated
Application:	Western Blotting (WB), ELISA, Immunofluorescence (IF), Immunohistochemistry (IHC)

Product Details

Immunogen:	The antiserum was produced against synthesized peptide derived from human GIRK1/KIR3.1/KCNJ3 around the phosphorylation site of Ser185.
Isotype:	IgG
Specificity:	GIRK1/KIR3.1/KCNJ3 (Phospho-Ser185) Antibody detects endogenous levels of GIRK1/KIR3.1/KCNJ3 only when phosphorylated at Ser185. PhosphorylationH:S185 M:S185 R:S185
Purification:	The antibody was purified from rabbit antiserum by affinity-chromatography using phospho peptide. The antibody against non-phospho peptide was removed by chromatography using corresponding non-phospho peptide.
Purity:	> 95 %

Target Details

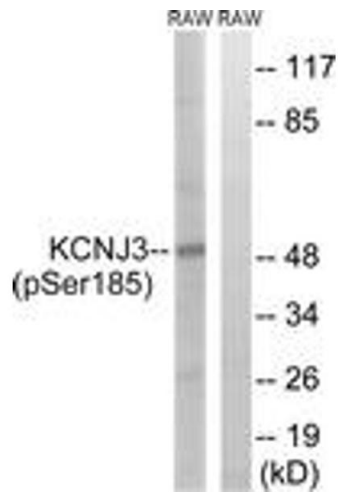
Target:	KCNJ3
Alternative Name:	GIRK1/KIR3.1/KCNJ3 (KCNJ3 Products)
Background:	Synonyms: G protein-activated inward rectifier potassium channel 1, IRK3, Inward rectifier K channel Kir3.1, KCNJ3, Kir3.1, Potassium channel, inwardly rectifying, subfamily J, member 3 NCBI Gene Symbol: KCNJ3
Molecular Weight:	42 kDa
Gene ID:	3760
OMIM:	601534
UniProt:	P48549

Application Details

Application Notes:	WB: 1:500~1:1000 IHC: 1:50~1:100 IF: 1:100~1:500 ELISA: 1:20000
Comment:	Unigene-Number: Hs.591606 (NCBI Gene Symbol: KCNJ3)
Restrictions:	For Research Use only

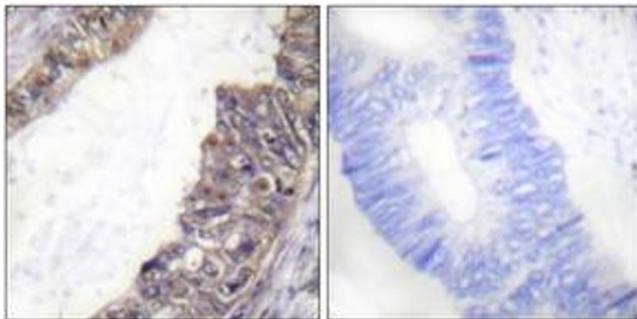
Handling

Format:	Liquid
Concentration:	1 mg/mL
Buffer:	phosphate buffered saline (without Mg ²⁺ and Ca ²⁺), pH 7.4, 150 mM NaCl, 0.02 % sodium azide and 50 % glycerol.
Preservative:	Sodium azide
Precaution of Use:	This product contains sodium azide: a POISONOUS AND HAZARDOUS SUBSTANCE which should be handled by trained staff only.
Storage:	-20 °C
Storage Comment:	Stable at -20°C for at least 1 year.
Expiry Date:	12 months



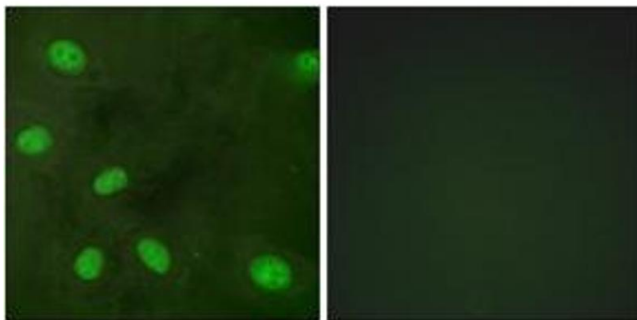
Western Blotting

Image 1. Western blot analysis of extracts from RAW264.7 cells treated with Insulin 0.01U/ml 15', using GIRK1/KIR3.1/KCNJ3 (Phospho-Ser185) Antibody. The lane on the right is treated with the synthesized peptide.



Immunohistochemistry

Image 2. Immunohistochemistry analysis of paraffin-embedded human colon carcinoma, using GIRK1/KIR3.1/KCNJ3 (Phospho-Ser185) Antibody. The picture on the right is treated with the synthesized peptide.



Immunofluorescence

Image 3. Immunofluorescence analysis of HeLa cells, using GIRK1/KIR3.1/KCNJ3 (Phospho-Ser185) Antibody. The picture on the right is treated with the synthesized peptide.