

Datasheet for ABIN1531650
anti-RACGAP1 antibody (pSer387)

3 Images

[Go to Product page](#)

Overview

Quantity:	100 µg
Target:	RACGAP1
Binding Specificity:	AA 353-402, pSer387
Reactivity:	Human, Mouse, Rat
Host:	Rabbit
Clonality:	Polyclonal
Conjugate:	This RACGAP1 antibody is un-conjugated
Application:	Western Blotting (WB), Immunohistochemistry (IHC), ELISA, Immunofluorescence (IF)

Product Details

Immunogen:	The antiserum was produced against synthesized peptide derived from human GTPase Activating Protein around the phosphorylation site of Ser387.
Isotype:	IgG
Specificity:	GTPase Activating Protein (Phospho-Ser387) Antibody detects endogenous levels of GTPase Activating Protein only when phosphorylated at Ser387. PhosphorylationH:S387 M:S388 R:S386
Purification:	The antibody was purified from rabbit antiserum by affinity-chromatography using phospho peptide. The antibody against non-phospho peptide was removed by chromatography using corresponding non-phospho peptide.
Purity:	> 95 %

Target Details

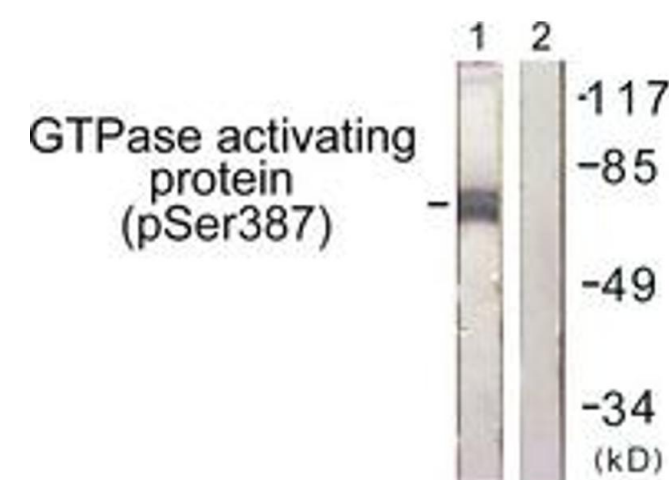
Target:	RACGAP1
Alternative Name:	GTPase Activating Protein (RACGAP1 Products)
Background:	Synonyms: GTPase activating protein, GTPase activating protein ID-GAP, MGCRACGAP variant alpha, MGCRACGAP variant beta, RAC GTPase- activating protein 1, RAC GTPase-activating protein, RACGAP1 NCBI Gene Symbol: RACGAP1
Molecular Weight:	71 kDa
Gene ID:	29127
OMIM:	604980
UniProt:	Q9H0H5
Pathways:	Regulation of Actin Filament Polymerization , Myometrial Relaxation and Contraction , Regulation of G-Protein Coupled Receptor Protein Signaling , Signaling of Hepatocyte Growth Factor Receptor

Application Details

Application Notes:	WB: 1:500~1:1000 IHC: 1:50~1:100 IF: 1:100~1:500 ELISA: 1:20000
Comment:	Unigene-Number: Hs.505469 (NCBI Gene Symbol: RACGAP1)
Restrictions:	For Research Use only

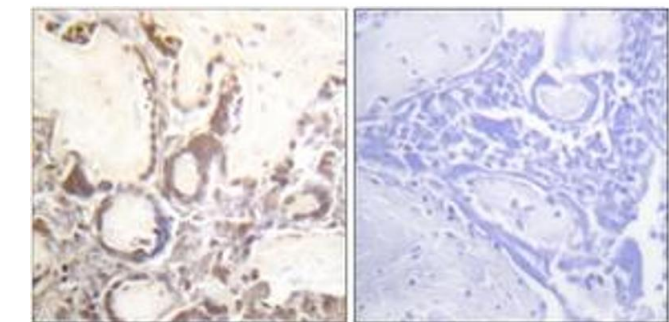
Handling

Format:	Liquid
Concentration:	1 mg/mL
Buffer:	phosphate buffered saline (without Mg ²⁺ and Ca ²⁺), pH 7.4, 150 mM NaCl, 0.02 % sodium azide and 50 % glycerol.
Preservative:	Sodium azide
Precaution of Use:	This product contains sodium azide: a POISONOUS AND HAZARDOUS SUBSTANCE which should be handled by trained staff only.
Storage:	-20 °C
Storage Comment:	Stable at -20°C for at least 1 year.



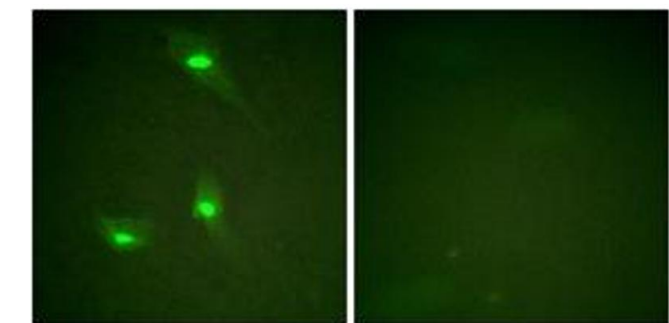
Western Blotting

Image 1. Western blot analysis of extracts from COS7 cells, using GTPase Activating Protein (Phospho-Ser387) Antibody. The lane on the right is treated with the synthesized peptide.



Immunohistochemistry

Image 2. Immunohistochemistry analysis of paraffin-embedded human placenta, using GTPase Activating Protein (Phospho-Ser387) Antibody. The picture on the right is treated with the synthesized peptide.



Immunofluorescence

Image 3. Immunofluorescence analysis of HeLa cells, using GTPase Activating Protein (Phospho-Ser387) Antibody. The picture on the right is treated with the synthesized peptide.