



[Go to Product page](#)

Datasheet for ABIN1531654
anti-HMGN1 antibody (pSer21)

2 Images

Overview

Quantity:	100 µL
Target:	HMGN1
Binding Specificity:	AA 10-59, pSer21
Reactivity:	Human, Mouse, Rat
Host:	Rabbit
Clonality:	Polyclonal
Conjugate:	This HMGN1 antibody is un-conjugated
Application:	Immunohistochemistry (IHC), ELISA, Immunofluorescence (IF)

Product Details

Immunogen:	The antiserum was produced against synthesized peptide derived from human HMG14 around the phosphorylation site of Ser21.
Isotype:	IgG
Specificity:	HMG14 (Phospho-Ser21) Antibody detects endogenous levels of HMG14 only when phosphorylated at Ser21. PhosphorylationH:S21 M:S20 R:S21
Purification:	The antibody was purified from rabbit antiserum by affinity-chromatography using phospho peptide. The antibody against non-phospho peptide was removed by chromatography using corresponding non-phospho peptide.
Purity:	> 95 %

Target Details

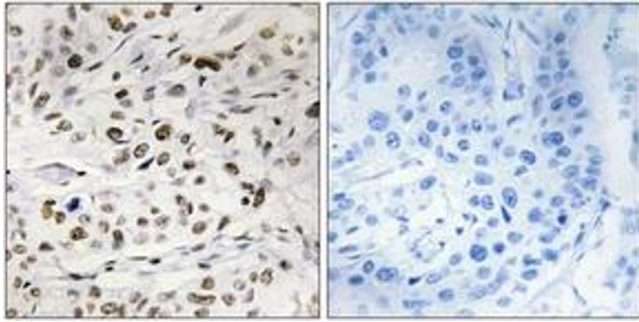
Target:	HMGN1
Alternative Name:	HMG14 (HMGN1 Products)
Background:	Synonyms: high-mobility group nucleosome binding domain 1, HMG14, nonhistone chromosomal protein HMG-14 NCBI Gene Symbol: HMGN1
Molecular Weight:	10 kDa
Gene ID:	3150
OMIM:	163920
UniProt:	P05114
Pathways:	Chromatin Binding

Application Details

Application Notes:	IHC: 1:50~1:100 IF: 1:100~1:500 ELISA: 1:1000
Comment:	Unigene-Number: Hs.356285, Hs.702472 (NCBI Gene Symbol: HMGN1)
Restrictions:	For Research Use only

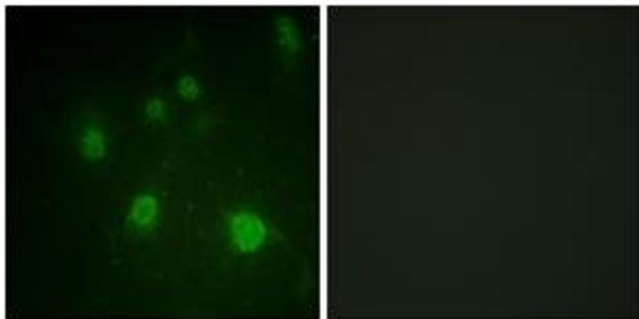
Handling

Format:	Liquid
Concentration:	1 mg/mL
Buffer:	phosphate buffered saline (without Mg ²⁺ and Ca ²⁺), pH 7.4, 150 mM NaCl, 0.02 % sodium azide and 50 % glycerol.
Preservative:	Sodium azide
Precaution of Use:	This product contains sodium azide: a POISONOUS AND HAZARDOUS SUBSTANCE which should be handled by trained staff only.
Storage:	-20 °C
Storage Comment:	Stable at -20°C for at least 1 year.
Expiry Date:	12 months



Immunohistochemistry

Image 1. Immunohistochemistry analysis of paraffin-embedded human breast carcinoma, using HMG14 (Phospho-Ser21) Antibody. The picture on the right is treated with the synthesized peptide.



Immunofluorescence

Image 2. Immunofluorescence analysis of COS7 cells, using HMG14 (Phospho-Ser21) Antibody. The picture on the right is treated with the synthesized peptide.