

Datasheet for ABIN1531669  
**anti-CXCR2 antibody (pSer347)**

## 3 Images

[Go to Product page](#)

## Overview

Quantity:	100 µg
Target:	CXCR2
Binding Specificity:	AA 311-360, pSer347
Reactivity:	Human, Mouse
Host:	Rabbit
Clonality:	Polyclonal
Conjugate:	This CXCR2 antibody is un-conjugated
Application:	Western Blotting (WB), ELISA, Immunohistochemistry (IHC), Immunofluorescence (IF)

## Product Details

Immunogen:	The antiserum was produced against synthesized peptide derived from human IL-8R beta/CDw128 beta around the phosphorylation site of Ser347.
Isotype:	IgG
Specificity:	IL-8R beta/CDw128 beta (Phospho-Ser347) Antibody detects endogenous levels of IL-8R beta/CDw128 beta only when phosphorylated at Ser347. PhosphorylationH:S347 M:S346
Purification:	The antibody was purified from rabbit antiserum by affinity-chromatography using phospho peptide. The antibody against non-phospho peptide was removed by chromatography using corresponding non-phospho peptide.
Purity:	> 95 %

## Target Details

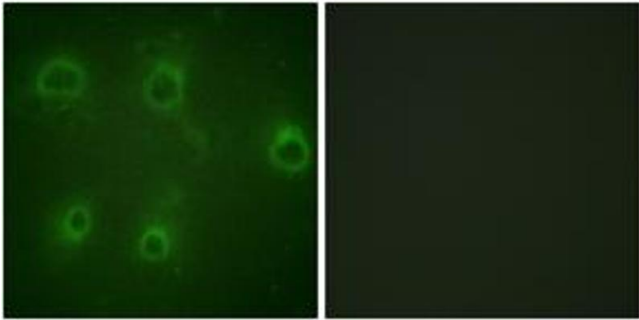
Target:	CXCR2
Alternative Name:	IL-8R beta/cdw128 beta ( <a href="#">CXCR2 Products</a> )
Background:	Synonyms: High affinity interleukin-8 receptor B, IL-8R B, CXCR-2, GRO/MGSA receptor, IL-8 receptor type 2, CD182 antigen, CDw128b, IL8RB, CXCR2 NCBI Gene Symbol: CXCR2
Molecular Weight:	40 kDa
Gene ID:	3579
OMIM:	146928
UniProt:	<a href="#">P25025</a>
Pathways:	<a href="#">cAMP Metabolic Process</a>

## Application Details

Application Notes:	WB: 1:500~1:1000 IHC: 1:50~1:100 IF: 1:100~1:500 ELISA: 1:1000
Comment:	Unigene-Number: Hs.846 (NCBI Gene Symbol: CXCR2)
Restrictions:	For Research Use only

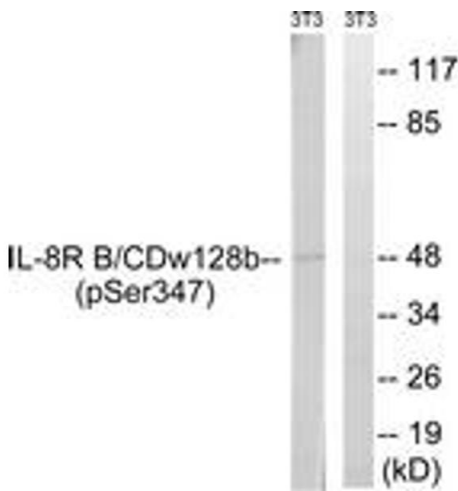
## Handling

Format:	Liquid
Concentration:	1 mg/mL
Buffer:	phosphate buffered saline (without Mg <sup>2+</sup> and Ca <sup>2+</sup> ), pH 7.4, 150 mM NaCl, 0.02 % sodium azide and 50 % glycerol.
Preservative:	Sodium azide
Precaution of Use:	This product contains sodium azide: a POISONOUS AND HAZARDOUS SUBSTANCE which should be handled by trained staff only.
Storage:	-20 °C
Storage Comment:	Stable at -20°C for at least 1 year.
Expiry Date:	12 months



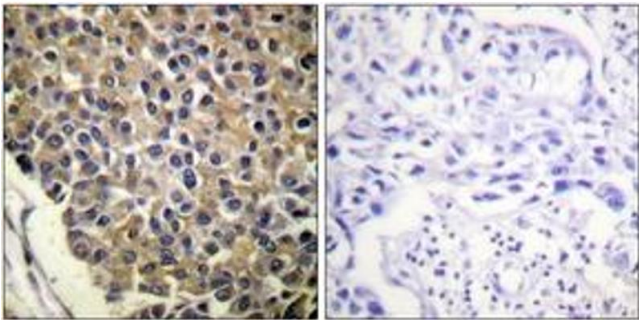
### Immunofluorescence

**Image 1.** Immunofluorescence analysis of COS7 cells, using IL-8R beta/CDw128 beta (Phospho-Ser347) Antibody. The picture on the right is treated with the synthesized peptide.



### Western Blotting

**Image 2.** Western blot analysis of extracts from NIH-3T3 cells treated with PMA 125ng/ml 30', using IL-8R beta/CDw128 beta (Phospho-Ser347) Antibody. The lane on the right is treated with the synthesized peptide.



### Immunohistochemistry

**Image 3.** Immunohistochemistry analysis of paraffin-embedded human breast carcinoma, using IL-8R beta/CDw128 beta (Phospho-Ser347) Antibody. The picture on the right is treated with the synthesized peptide.