

Datasheet for ABIN1531671  
**anti-ITPR1 antibody (pSer1598)**

## 2 Images

[Go to Product page](#)

## Overview

Quantity:	100 µg
Target:	ITPR1
Binding Specificity:	AA 1566-1615, pSer1598
Reactivity:	Human, Mouse, Rat
Host:	Rabbit
Clonality:	Polyclonal
Conjugate:	This ITPR1 antibody is un-conjugated
Application:	ELISA, Immunohistochemistry (IHC), Immunofluorescence (IF)

## Product Details

Immunogen:	The antiserum was produced against synthesized peptide derived from human Inositol 1,4,5-trisphosphate R1 around the phosphorylation site of Ser1598/1588.
Isotype:	IgG
Specificity:	Inositol 1,4,5-trisphosphate R1 (Phospho-Ser1598/1588) Antibody detects endogenous levels of Inositol 1,4,5-trisphosphate R1 only when phosphorylated at Ser1598/1588. PhosphorylationH:S1598 M:S1588 R:S1589
Purification:	The antibody was purified from rabbit antiserum by affinity-chromatography using phospho peptide. The antibody against non-phospho peptide was removed by chromatography using corresponding non-phospho peptide.
Purity:	> 95 %

## Target Details

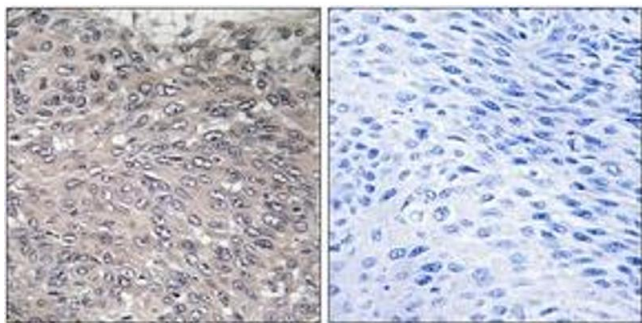
Target:	ITPR1
Abstract:	<a href="#">ITPR1 Products</a>
Background:	Synonyms: Inositol 1,4,5-trisphosphate receptor type 1, InsP3R1, IP3 receptor isoform 1, IP3R, ITPR1, Type 1 inositol 1,4,5- trisphosphate receptor, Type 1 InsP3 receptor NCBI Gene Symbol: ITPR1
Molecular Weight:	313 kDa
Gene ID:	3708
OMIM:	147265
UniProt:	<a href="#">Q14643</a>
Pathways:	<a href="#">Fc-epsilon Receptor Signaling Pathway</a> , <a href="#">EGFR Signaling Pathway</a> , <a href="#">Neurotrophin Signaling Pathway</a> , <a href="#">Thyroid Hormone Synthesis</a> , <a href="#">Myometrial Relaxation and Contraction</a> , <a href="#">Synaptic Membrane</a> , <a href="#">G-protein mediated Events</a> , <a href="#">Interaction of EGFR with phospholipase C-gamma</a>

## Application Details

Application Notes:	IHC: 1:50~1:100 IF: 1:100~1:500 ELISA: 1:1000
Comment:	Unigene-Number: Hs.567295, Hs.712541 (NCBI Gene Symbol: ITPR1)
Restrictions:	For Research Use only

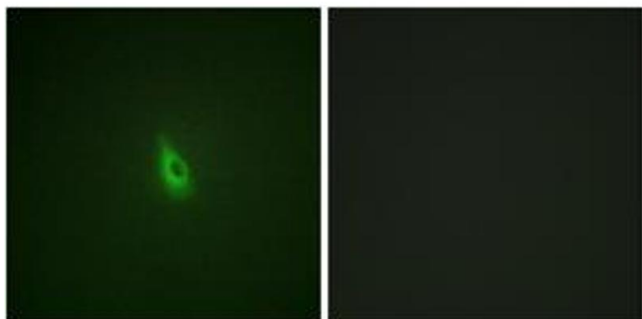
## Handling

Format:	Liquid
Concentration:	1 mg/mL
Buffer:	phosphate buffered saline (without Mg <sup>2+</sup> and Ca <sup>2+</sup> ), pH 7.4, 150 mM NaCl, 0.02 % sodium azide and 50 % glycerol.
Preservative:	Sodium azide
Precaution of Use:	This product contains sodium azide: a POISONOUS AND HAZARDOUS SUBSTANCE which should be handled by trained staff only.
Storage:	-20 °C
Storage Comment:	Stable at -20°C for at least 1 year.
Expiry Date:	12 months



### Immunohistochemistry

**Image 1.** Immunohistochemistry analysis of paraffin-embedded human cervix carcinoma, using Inositol 1, 4, 5-trisphosphate R1 (Phospho-Ser1598/1588) Antibody. The picture on the right is treated with the synthesized peptide.



### Immunofluorescence

**Image 2.** Immunofluorescence analysis of A549 cells, using Inositol 1, 4, 5-trisphosphate R1 (Phospho-Ser1598/1588) Antibody. The picture on the right is treated with the synthesized peptide.