

Datasheet for ABIN1531676

## anti-Integrin beta 4 antibody (pTyr1510)



[Go to Product page](#)

### 2 Images

#### Overview

Quantity:	100 µL
Target:	Integrin beta 4 (ITGB4)
Binding Specificity:	AA 1481-1530, pTyr1510
Reactivity:	Human, Mouse, Rat
Host:	Rabbit
Clonality:	Polyclonal
Conjugate:	This Integrin beta 4 antibody is un-conjugated
Application:	Western Blotting (WB), Immunohistochemistry (IHC), ELISA

#### Product Details

Immunogen:	The antiserum was produced against synthesized peptide derived from human ITGB4 around the phosphorylation site of Tyr1510.
Isotype:	IgG
Specificity:	ITGB4 (Phospho-Tyr1510) Antibody detects endogenous levels of ITGB4 only when phosphorylated at Tyr1510. PhosphorylationH:Y1510 M:Y1318 R:Y1441
Purification:	The antibody was purified from rabbit antiserum by affinity-chromatography using phospho peptide. The antibody against non-phospho peptide was removed by chromatography using corresponding non-phospho peptide.
Purity:	> 95 %

## Target Details

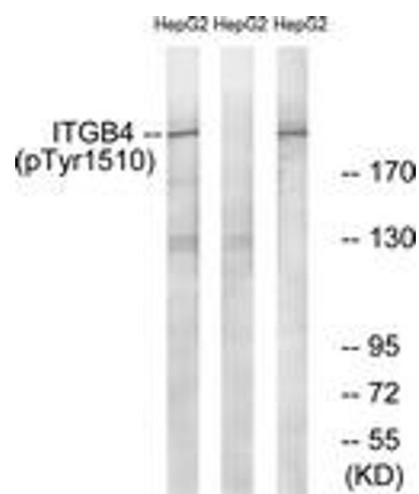
Target:	Integrin beta 4 (ITGB4)
Alternative Name:	ITGB4 ( <a href="#">ITGB4 Products</a> )
Background:	Synonyms: CD104 antigen, GP150, ITB4, integrin beta-4, integrin beta-4C NCBI Gene Symbol: ITGB4
Molecular Weight:	202 kDa
Gene ID:	3691
OMIM:	147557
UniProt:	<a href="#">P16144</a>
Pathways:	<a href="#">Integrin Complex</a>

## Application Details

Application Notes:	WB: 1:500~1:1000 IHC: 1:50~1:100 ELISA: 1:10000
Comment:	Unigene-Number: Hs.407966, Hs.632226 (NCBI Gene Symbol: ITGB4)
Restrictions:	For Research Use only

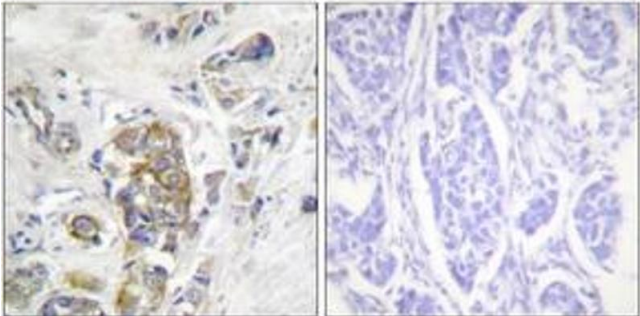
## Handling

Format:	Liquid
Concentration:	1 mg/mL
Buffer:	phosphate buffered saline (without Mg <sup>2+</sup> and Ca <sup>2+</sup> ), pH 7.4, 150 mM NaCl, 0.02 % sodium azide and 50 % glycerol.
Preservative:	Sodium azide
Precaution of Use:	This product contains sodium azide: a POISONOUS AND HAZARDOUS SUBSTANCE which should be handled by trained staff only.
Storage:	-20 °C
Storage Comment:	Stable at -20°C for at least 1 year.
Expiry Date:	12 months



Western Blotting

**Image 1.** Western blot analysis of extracts from HepG2 cells treated with Na2VO3 0.3nM 40', using ITGB4 (Phospho-Tyr1510) Antibody. The lane on the right is treated with the synthesized peptide.



Immunohistochemistry

**Image 2.** Immunohistochemistry analysis of paraffin-embedded human breast carcinoma, using ITGB4 (Phospho-Tyr1510) Antibody. The picture on the right is treated with the synthesized peptide.