



[Go to Product page](#)

Datasheet for ABIN1531680

## anti-KIR5.1 antibody (pSer417)

### 3 Images

#### Overview

Quantity:	100 µL
Target:	KIR5.1 (KCNJ16)
Binding Specificity:	AA 369-418, pSer417
Reactivity:	Rat, Mouse
Host:	Rabbit
Clonality:	Polyclonal
Conjugate:	This KIR5.1 antibody is un-conjugated
Application:	Western Blotting (WB), ELISA, Immunohistochemistry (IHC), Immunofluorescence (IF)

#### Product Details

Immunogen:	The antiserum was produced against synthesized peptide derived from mouse Kir5.1 around the phosphorylation site of Ser417.
Isotype:	IgG
Specificity:	Kir5.1 (Phospho-Ser417) Antibody detects endogenous levels of Kir5.1 only when phosphorylated at Ser417. PhosphorylationM:S417 R:S417
Purification:	The antibody was purified from rabbit antiserum by affinity-chromatography using phospho peptide. The antibody against non-phospho peptide was removed by chromatography using corresponding non-phospho peptide.
Purity:	> 95 %

## Target Details

---

Target:	KIR5.1 (KCNJ16)
Alternative Name:	Kir5.1 ( <a href="#">KCNJ16 Products</a> )
Background:	Synonyms: IRK16, IRKG, Inward rectifier K channel Kir5.1, KCNJ16, Potassium channel inwardly rectifying subfamily J member 16 NCBI Gene Symbol: KCNJ16
Molecular Weight:	47 kDa
Gene ID:	16517
UniProt:	<a href="#">Q9Z307</a>

## Application Details

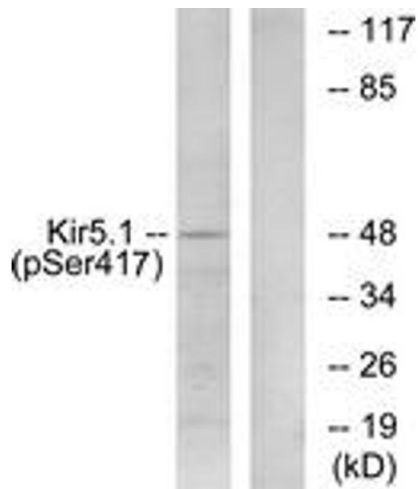
---

Application Notes:	WB: 1:500~1:1000 IHC: 1:50~1:100 IF: 1:100~1:500 ELISA: 1:5000
Comment:	Unigene-Number: Mm.30176 (NCBI Gene Symbol: KCNJ16)
Restrictions:	For Research Use only

## Handling

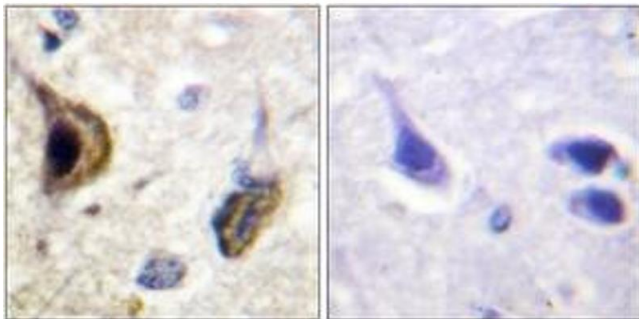
---

Format:	Liquid
Concentration:	1 mg/mL
Buffer:	phosphate buffered saline (without Mg <sup>2+</sup> and Ca <sup>2+</sup> ), pH 7.4, 150 mM NaCl, 0.02 % sodium azide and 50 % glycerol.
Preservative:	Sodium azide
Precaution of Use:	This product contains sodium azide: a POISONOUS AND HAZARDOUS SUBSTANCE which should be handled by trained staff only.
Storage:	-20 °C
Storage Comment:	Stable at -20°C for at least 1 year.
Expiry Date:	12 months



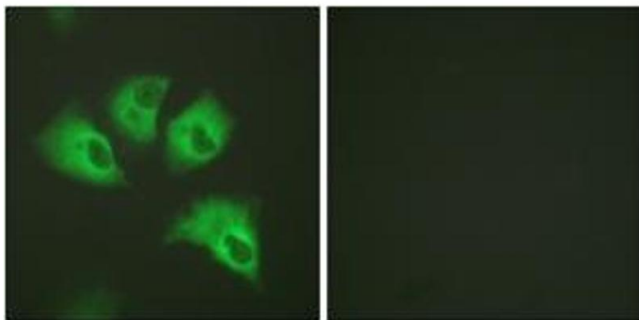
### Western Blotting

**Image 1.** Western blot analysis of extracts from RAW264.7 cells treated with forskolin 40nM 30', using Kir5.1 (Phospho-Ser417) Antibody. The lane on the right is treated with the synthesized peptide.



### Immunohistochemistry

**Image 2.** Immunohistochemistry analysis of paraffin-embedded human brain, using Kir5.1 (Phospho-Ser417) Antibody. The picture on the right is treated with the synthesized peptide.



### Immunofluorescence

**Image 3.** Immunofluorescence analysis of HeLa cells, using Kir5.1 (Phospho-Ser417) Antibody. The picture on the right is treated with the synthesized peptide.