

Datasheet for ABIN1531682  
**anti-KCNA3 antibody (pTyr135)**

## 3 Images

[Go to Product page](#)

## Overview

Quantity:	100 µg
Target:	KCNA3
Binding Specificity:	AA 101-150, pTyr135
Reactivity:	Human, Mouse, Rat
Host:	Rabbit
Clonality:	Polyclonal
Conjugate:	This KCNA3 antibody is un-conjugated
Application:	Western Blotting (WB), ELISA, Immunohistochemistry (IHC), Immunofluorescence (IF)

## Product Details

Immunogen:	The antiserum was produced against synthesized peptide derived from human Kv1.3/KCNA3 around the phosphorylation site of Tyr135.
Isotype:	IgG
Specificity:	Kv1.3/KCNA3 (Phospho-Tyr135) Antibody detects endogenous levels of Kv1.3/KCNA3 only when phosphorylated at Tyr135. PhosphorylationH:Y135 M:Y140 R:Y137
Purification:	The antibody was purified from rabbit antiserum by affinity-chromatography using phospho peptide. The antibody against non-phospho peptide was removed by chromatography using corresponding non-phospho peptide.
Purity:	> 95 %

## Target Details

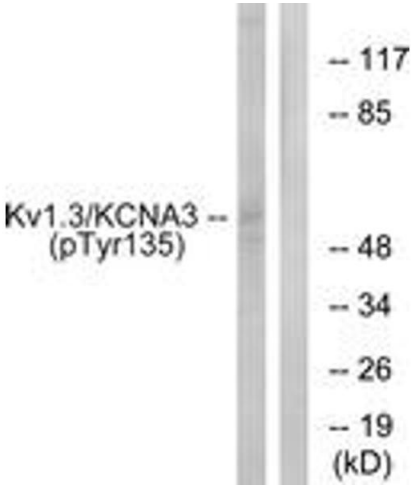
Target:	KCNA3
Alternative Name:	Kv1.3/KCNA3 ( <a href="#">KCNA3 Products</a> )
Background:	Synonyms: CIK3, HGK5, HLK3, HPCN3, HuKIII, KCNA3, Potassium channel Kv1.3, Potassium voltage-gated channel subfamily A member 3 NCBI Gene Symbol: KCNA3
Molecular Weight:	58 kDa
Gene ID:	3738
OMIM:	176263
UniProt:	<a href="#">P22001</a>

## Application Details

Application Notes:	WB: 1:500~1:1000 IHC: 1:50~1:100 IF: 1:100~1:500 ELISA: 1:20000
Comment:	Unigene-Number: Hs.169948 (NCBI Gene Symbol: KCNA3)
Restrictions:	For Research Use only

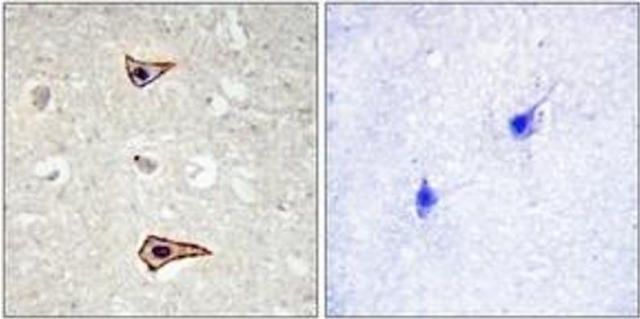
## Handling

Format:	Liquid
Concentration:	1 mg/mL
Buffer:	phosphate buffered saline (without Mg2+ and Ca2+), pH 7.4, 150 mM NaCl, 0.02 % sodium azide and 50 % glycerol.
Preservative:	Sodium azide
Precaution of Use:	This product contains sodium azide: a POISONOUS AND HAZARDOUS SUBSTANCE which should be handled by trained staff only.
Storage:	-20 °C
Storage Comment:	Stable at -20°C for at least 1 year.
Expiry Date:	12 months



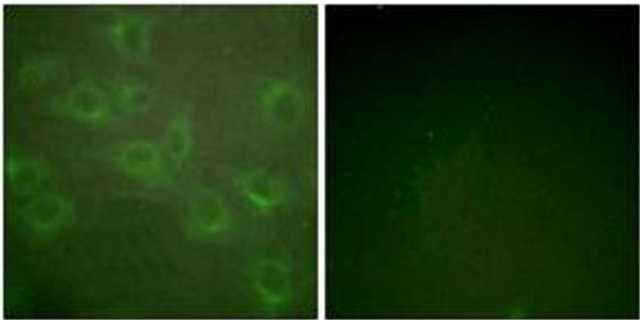
### Western Blotting

**Image 1.** Western blot analysis of extracts from Jurkat cells treated with starved 24h, using Kv1.3/KCNA3 (Phospho-Tyr135) Antibody. The lane on the right is treated with the synthesized peptide.



### Immunohistochemistry

**Image 2.** Immunohistochemistry analysis of paraffin-embedded human brain, using Kv1.3/KCNA3 (Phospho-Tyr135) Antibody. The picture on the right is treated with the synthesized peptide.



### Immunofluorescence

**Image 3.** Immunofluorescence analysis of HuvEc cells, using Kv1.3/KCNA3 (Phospho-Tyr135) Antibody. The picture on the right is treated with the synthesized peptide.