

Datasheet for ABIN1531684
anti-KCNQ3 antibody (pThr217)



[Go to Product page](#)

1 Image

Overview

Quantity:	100 µL
Target:	KCNQ3
Binding Specificity:	AA 191-240, pThr217
Reactivity:	Human, Mouse, Rat
Host:	Rabbit
Clonality:	Polyclonal
Conjugate:	This KCNQ3 antibody is un-conjugated
Application:	ELISA, Immunohistochemistry (IHC)

Product Details

Immunogen:	The antiserum was produced against synthesized peptide derived from human Kv7.3/KCNQ3 around the phosphorylation site of Thr246.
Isotype:	IgG
Specificity:	Kv7.3/KCNQ3 (Phospho-Thr246) Antibody detects endogenous levels of Kv7.3/KCNQ3 only when phosphorylated at Thr246. PhosphorylationH:T217/246/223/251 M:T217/247/224/252 R:T217/247/-/-
Purification:	The antibody was purified from rabbit antiserum by affinity-chromatography using phospho peptide. The antibody against non-phospho peptide was removed by chromatography using corresponding non-phospho peptide.
Purity:	> 95 %

Target Details

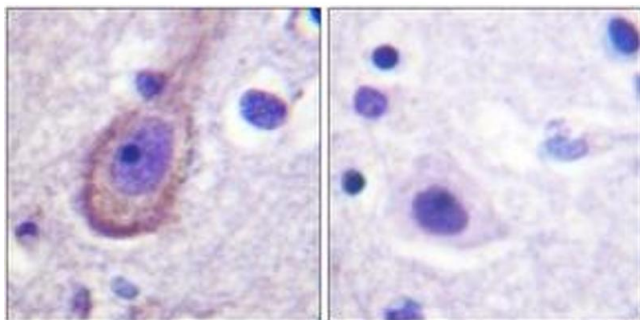
Target:	KCNQ3
Alternative Name:	Kv7.3/KCNQ3 (KCNQ3 Products)
Background:	Synonyms: KCNQ3, KQT-like 3, potassium channel alpha subunit KvLQT3, potassium voltage-gated channel subfamily KQT member 3, voltage-gated potassium channel subunit Kv7.3 NCBI Gene Symbol: KCNQ2
Molecular Weight:	96 kDa
Gene ID:	3785, 3786, 9132
OMIM:	121200
UniProt:	O43526 , O43525 , P56696 , Q9NR82

Application Details

Application Notes:	IHC: 1:50~1:100 ELISA: 1:20000
Comment:	Unigene-Number: Hs.161851, Hs.374023, Hs.473058, Hs.675919 (NCBI Gene Symbol: KCNQ2)
Restrictions:	For Research Use only

Handling

Format:	Liquid
Concentration:	1 mg/mL
Buffer:	phosphate buffered saline (without Mg2+ and Ca2+), pH 7.4, 150 mM NaCl, 0.02 % sodium azide and 50 % glycerol.
Preservative:	Sodium azide
Precaution of Use:	This product contains sodium azide: a POISONOUS AND HAZARDOUS SUBSTANCE which should be handled by trained staff only.
Storage:	-20 °C
Storage Comment:	Stable at -20°C for at least 1 year.
Expiry Date:	12 months



Immunohistochemistry

Image 1. Immunohistochemistry analysis of paraffin-embedded human brain, using Kv7.3/KCNQ3 (Phospho-Thr246) Antibody. The picture on the right is treated with the synthesized peptide.