

Datasheet for ABIN1531691  
**anti-NIFK antibody (pThr234)**

## 2 Images

[Go to Product page](#)

## Overview

Quantity:	100 µg
Target:	NIFK (MKI67IP)
Binding Specificity:	AA 200-249, pThr234
Reactivity:	Human, Mouse
Host:	Rabbit
Clonality:	Polyclonal
Conjugate:	This NIFK antibody is un-conjugated
Application:	ELISA, Immunofluorescence (IF), Immunohistochemistry (IHC)

## Product Details

Immunogen:	The antiserum was produced against synthesized peptide derived from human NIFK around the phosphorylation site of Thr234.
Isotype:	IgG
Specificity:	NIFK (Phospho-Thr234) Antibody detects endogenous levels of NIFK only when phosphorylated at Thr234. PhosphorylationH:T234 M:T257
Purification:	The antibody was purified from rabbit antiserum by affinity-chromatography using phospho peptide. The antibody against non-phospho peptide was removed by chromatography using corresponding non-phospho peptide.
Purity:	> 95 %

## Target Details

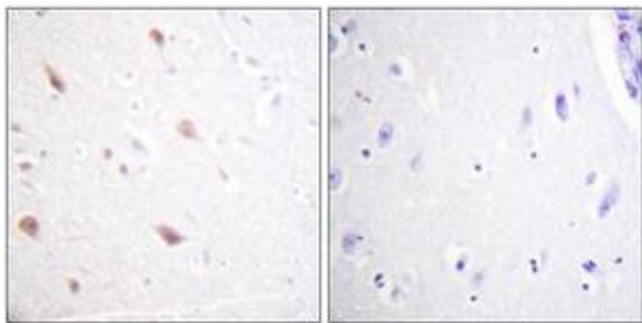
Target:	NIFK (MKI67IP)
Alternative Name:	NIFK ( <a href="#">MKI67IP Products</a> )
Background:	Synonyms: MKI67IP, NIFK, Nucleolar protein NIFK, RNA binding protein NCBI Gene Symbol: MKI67IP
Molecular Weight:	34 kDa
Gene ID:	84365
OMIM:	611970
UniProt:	<a href="#">Q9BYG3</a>

## Application Details

Application Notes:	IHC: 1:50~1:100 IF: 1:100~1:500 ELISA: 1:40000
Comment:	Unigene-Number: Hs.367842 (NCBI Gene Symbol: MKI67IP)
Restrictions:	For Research Use only

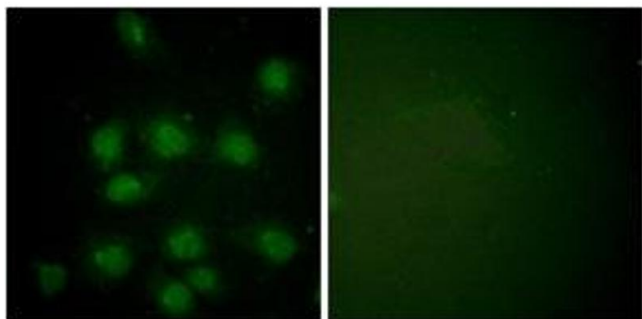
## Handling

Format:	Liquid
Concentration:	1 mg/mL
Buffer:	phosphate buffered saline (without Mg <sup>2+</sup> and Ca <sup>2+</sup> ), pH 7.4, 150 mM NaCl, 0.02 % sodium azide and 50 % glycerol.
Preservative:	Sodium azide
Precaution of Use:	This product contains sodium azide: a POISONOUS AND HAZARDOUS SUBSTANCE which should be handled by trained staff only.
Storage:	-20 °C
Storage Comment:	Stable at -20°C for at least 1 year.
Expiry Date:	12 months



#### Immunohistochemistry

**Image 1.** Immunohistochemistry analysis of paraffin-embedded human brain, using NIFK (Phospho-Thr234) Antibody. The picture on the right is treated with the synthesized peptide.



#### Immunofluorescence

**Image 2.** Immunofluorescence analysis of HuvEc cells, using NIFK (Phospho-Thr234) Antibody. The picture on the right is treated with the synthesized peptide.