

Datasheet for ABIN1531711  
**anti-FANCA antibody (pSer1149)**

## 3 Images

[Go to Product page](#)

## Overview

Quantity:	100 µg
Target:	FANCA
Binding Specificity:	AA 1121-1170, pSer1149
Reactivity:	Human
Host:	Rabbit
Clonality:	Polyclonal
Conjugate:	This FANCA antibody is un-conjugated
Application:	Western Blotting (WB), ELISA, Immunohistochemistry (IHC), Immunofluorescence (IF)

## Product Details

Immunogen:	The antiserum was produced against synthesized peptide derived from human FANCA around the phosphorylation site of Ser1149.
Isotype:	IgG
Specificity:	FANCA (Phospho-Ser1149) Antibody detects endogenous levels of FANCA only when phosphorylated at Ser1149. PhosphorylationH:S1149
Purification:	The antibody was purified from rabbit antiserum by affinity-chromatography using phospho peptide. The antibody against non-phospho peptide was removed by chromatography using corresponding non-phospho peptide.
Purity:	> 95 %

## Target Details

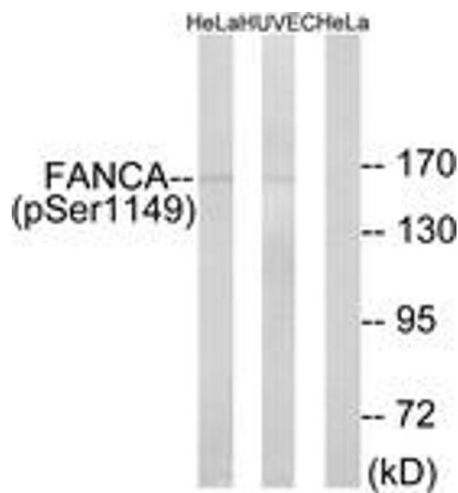
Target:	FANCA
Alternative Name:	FANCA ( <a href="#">FANCA Products</a> )
Background:	Synonyms: FA, FA-H, FA1, FAA, FACA, FAH, FANCH, Fa, Fanconi anemia group A protein NCBI Gene Symbol: FANCA
Molecular Weight:	162 kDa
Gene ID:	2175
OMIM:	227650
UniProt:	<a href="#">O15360</a>
Pathways:	<a href="#">DNA Damage Repair</a>

## Application Details

Application Notes:	WB: 1:500~1:1000 IHC: 1:50~1:100 IF: 1:100~1:500 ELISA: 1:10000
Comment:	Unigene-Number: Hs.567267 (NCBI Gene Symbol: FANCA)
Restrictions:	For Research Use only

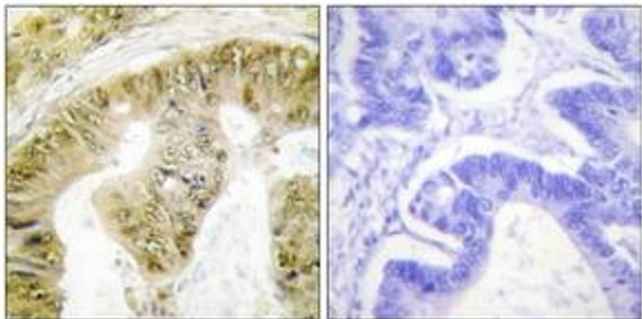
## Handling

Format:	Liquid
Concentration:	1 mg/mL
Buffer:	phosphate buffered saline (without Mg <sup>2+</sup> and Ca <sup>2+</sup> ), pH 7.4, 150 mM NaCl, 0.02 % sodium azide and 50 % glycerol.
Preservative:	Sodium azide
Precaution of Use:	This product contains sodium azide: a POISONOUS AND HAZARDOUS SUBSTANCE which should be handled by trained staff only.
Storage:	-20 °C
Storage Comment:	Stable at -20°C for at least 1 year.
Expiry Date:	12 months



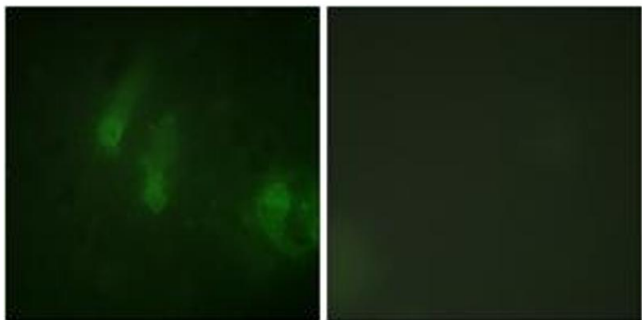
Western Blotting

**Image 1.** Western blot analysis of extracts from HeLa cells treated with IGF 100ng/ml 10' and HuvEc cells treated with EGF 200ng/ml 30', using FANCA (Phospho-Ser1149) Antibody. The lane on the right is treated with the synthesized peptide.



Immunohistochemistry

**Image 2.** Immunohistochemistry analysis of paraffin-embedded human colon carcinoma, using FANCA (Phospho-Ser1149) Antibody. The picture on the right is treated with the synthesized peptide.



Immunofluorescence

**Image 3.** Immunofluorescence analysis of HeLa cells, using FANCA (Phospho-Ser1149) Antibody. The picture on the right is treated with the synthesized peptide.