

Datasheet for ABIN1531726  
**anti-PIKFYVE antibody (pSer307)**

## 2 Images

[Go to Product page](#)

## Overview

Quantity:	100 µg
Target:	PIKFYVE
Binding Specificity:	AA 273-322, pSer307
Reactivity:	Human, Mouse, Rat
Host:	Rabbit
Clonality:	Polyclonal
Conjugate:	This PIKFYVE antibody is un-conjugated
Application:	ELISA, Immunohistochemistry (IHC), Immunofluorescence (IF)

## Product Details

Immunogen:	The antiserum was produced against synthesized peptide derived from human PIP5K around the phosphorylation site of Ser307.
Isotype:	IgG
Specificity:	PIP5K (Phospho-Ser307) Antibody detects endogenous levels of PIP5K only when phosphorylated at Ser307. PhosphorylationH:S307 M:S318 R:S357
Purification:	The antibody was purified from rabbit antiserum by affinity-chromatography using phospho peptide. The antibody against non-phospho peptide was removed by chromatography using corresponding non-phospho peptide.
Purity:	> 95 %

## Target Details

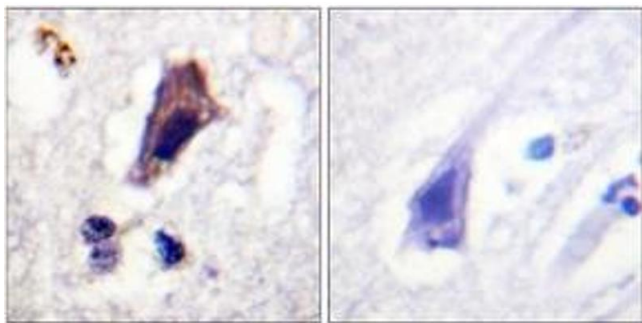
Target:	PIKFYVE
Alternative Name:	PIP5K ( <a href="#">PIKFYVE Products</a> )
Background:	Synonyms: 1- phosphatidylinositol-4-phosphate 5-kinase, FYV1, FYVE finger-containing phosphoinositide kinase, KIAA0981, PIKfyve, PIP5K3, PtdIns(4)P-5- kinase, p235 NCBI Gene Symbol: PIKFYVE
Molecular Weight:	237 kDa
Gene ID:	200576
OMIM:	121850
UniProt:	<a href="#">Q9Y2I7</a>
Pathways:	<a href="#">Inositol Metabolic Process</a>

## Application Details

Application Notes:	IHC: 1:50~1:100 IF: 1:100~1:500 ELISA: 1:10000
Comment:	Unigene-Number: Hs.173939 (NCBI Gene Symbol: PIKFYVE)
Restrictions:	For Research Use only

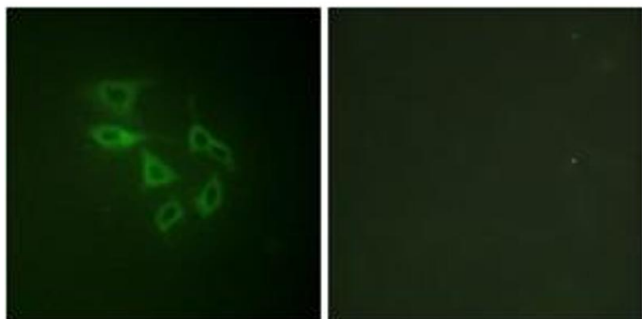
## Handling

Format:	Liquid
Concentration:	1 mg/mL
Buffer:	phosphate buffered saline (without Mg <sup>2+</sup> and Ca <sup>2+</sup> ), pH 7.4, 150 mM NaCl, 0.02 % sodium azide and 50 % glycerol.
Preservative:	Sodium azide
Precaution of Use:	This product contains sodium azide: a POISONOUS AND HAZARDOUS SUBSTANCE which should be handled by trained staff only.
Storage:	-20 °C
Storage Comment:	Stable at -20°C for at least 1 year.
Expiry Date:	12 months



#### Immunohistochemistry

**Image 1.** Immunohistochemistry analysis of paraffin-embedded human brain, using PIP5K (Phospho-Ser307) Antibody. The picture on the right is treated with the synthesized peptide.



#### Immunofluorescence

**Image 2.** Immunofluorescence analysis of HeLa cells, using PIP5K (Phospho-Ser307) Antibody. The picture on the right is treated with the synthesized peptide.