

Datasheet for ABIN1531728
anti-SSB antibody (pSer366)

3 Images

[Go to Product page](#)

Overview

Quantity:	100 µg
Target:	SSB
Binding Specificity:	AA 341-390, pSer366
Reactivity:	Human
Host:	Rabbit
Clonality:	Polyclonal
Conjugate:	This SSB antibody is un-conjugated
Application:	ELISA, Western Blotting (WB), Immunohistochemistry (IHC), Immunofluorescence (IF)

Product Details

Immunogen:	The antiserum was produced against synthesized peptide derived from human SSB around the phosphorylation site of Ser366.
Isotype:	IgG
Specificity:	SSB (Phospho-Ser366) Antibody detects endogenous levels of SSB only when phosphorylated at Ser366. PhosphorylationH:S366
Purification:	The antibody was purified from rabbit antiserum by affinity-chromatography using phospho peptide. The antibody against non-phospho peptide was removed by chromatography using corresponding non-phospho peptide.
Purity:	> 95 %

Target Details

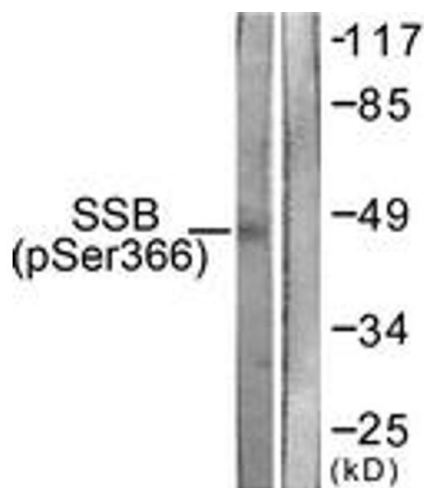
Target:	SSB
Alternative Name:	SSB (SSB Products)
Background:	Synonyms: Lupus La protein, Sjogren syndrome type B antigen, SS-B, La ribonucleoprotein, La autoantigen NCBI Gene Symbol: SSB
Molecular Weight:	46 kDa
Gene ID:	6741
OMIM:	109090
UniProt:	P05455

Application Details

Application Notes:	WB: 1:500~1:1000 IHC: 1:50~1:100 IF: 1:100~1:500 ELISA: 1:40000
Comment:	Unigene-Number: Hs.632535 (NCBI Gene Symbol: SSB)
Restrictions:	For Research Use only

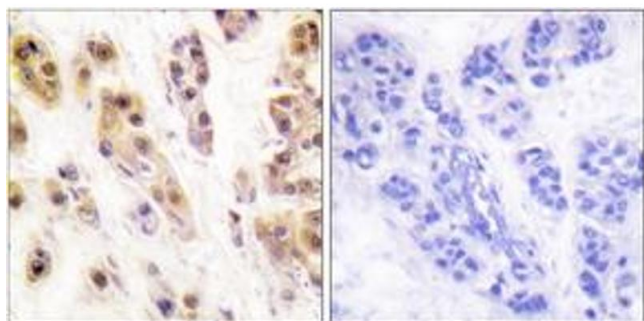
Handling

Format:	Liquid
Concentration:	1 mg/mL
Buffer:	phosphate buffered saline (without Mg2+ and Ca2+), pH 7.4, 150 mM NaCl, 0.02 % sodium azide and 50 % glycerol.
Preservative:	Sodium azide
Precaution of Use:	This product contains sodium azide: a POISONOUS AND HAZARDOUS SUBSTANCE which should be handled by trained staff only.
Storage:	-20 °C
Storage Comment:	Stable at -20°C for at least 1 year.
Expiry Date:	12 months



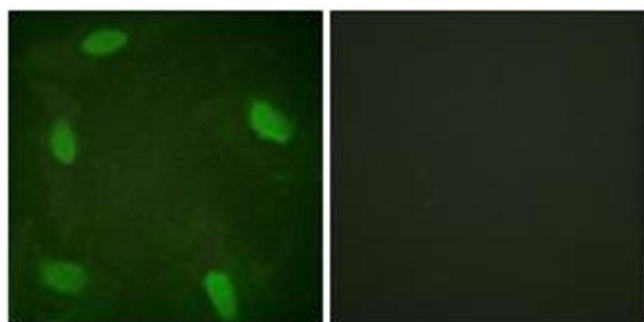
Western Blotting

Image 1. Western blot analysis of extracts from 293 cells, using SSB (Phospho-Ser366) Antibody. The lane on the right is treated with the synthesized peptide.



Immunohistochemistry

Image 2. Immunohistochemistry analysis of paraffin-embedded human breast carcinoma, using SSB (Phospho-Ser366) Antibody. The picture on the right is treated with the synthesized peptide.



Immunofluorescence

Image 3. Immunofluorescence analysis of HeLa cells treated with Forskolin 40nM 30', using SSB (Phospho-Ser366) Antibody. The picture on the right is treated with the synthesized peptide.